



Alexandra Grove, N4 2LG

£500,000
Share of Freehold



Alexandra Grove

£500,000

Share of Freehold

This spacious two-bedroom period flat spanning 748 sq. ft. is located on the top floor of a Victorian Conversion on Alexandra Grove, a quiet, no through road. The flat is spacious and light-filled, with the kitchen opening up to the open plan living and dining area, perfect for entertaining. Both double bedrooms are generously sized with ample room for storage. The flat is offered chain-free and with a share of the freehold - A wonderful opportunity for first time buyers looking to buy a period property in a fantastic location.

Set in a prime location, you'll have parks, trendy cafes, shops, and excellent transport links at your doorstep. With the Underground (Piccadilly and Victoria Line), National Rail, and buses nearby, commuting to central London is a breeze. A perfect home for those seeking charm, convenience, and connectivity in North London.

- 748 sq ft / 69.5 sq m
- Two Double Bedrooms
- Period Conversion
- Open Plan Kitchen
- Share Of Freehold
- Top Floor Flat
- Offered Chain Free
- Excellent Transport Links



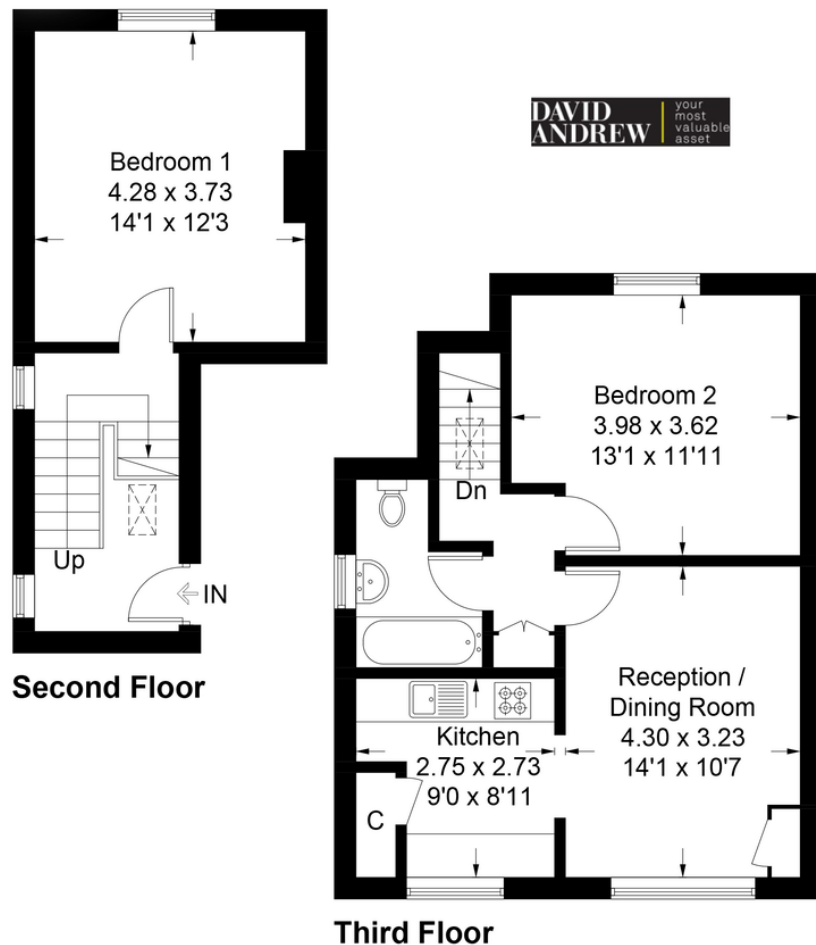




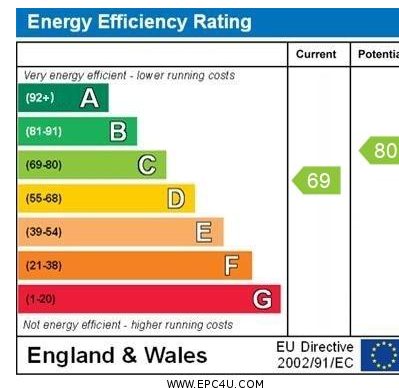
Alexandra Grove, N4

Approximate Gross Internal Area = 69.5 sq m / 748 sq ft

DAVID ANDREW | your most valuable asset



This plan is for layout guidance only. Not drawn to scale unless stated. Windows and door openings are approximate. Whilst every care is taken in the preparation of this plan, please check all dimensions, shapes and compass bearings before making any decisions reliant upon them.



Agent's Note:

Whilst Care has been exercised in the preparation of these sales particulars, statements about the property must not be relied upon as representations of statements or fact. Prospective purchasers must make and rely upon their own enquiries and those of professional representatives. The company accept not liability for any error contained in these particulars.

Archway Office

671 Holloway Road
London, N19 5SE

T (0)20 7619 3750

Highbury Office

90 Highbury Park
London N5 2XE

T (0)20 7354 9111

Stroud Green Office

167 Stroud Green Road
London N4 3PZ

T (0)20 7281 2000

General Contact

E info@davidandrew.co.uk

W www.davidandrew.co.uk

