



Mowatt Close, N19 3XY

£550,000
Leasehold



Mowatt Close

£550,000

Leasehold

We are proud to offer this large 3-bedroom maisonette ground and first floor of this ex-local authority development, with private secure garen. The property offers three good size bedrooms, kitchen/diner, family bathroom plus WC and a seperate reception leading to the garden.

Opposite Zoffany Park, the flat is well located just off Fairbridge Road with access to Archway underground station (Northern Line), Upper Holloway overground station, Local parks, shops and amenities Holloway Road and the surrounding area have to offer.

- 952 sq ft - 88.4 sqm
- 2 Large Double - 1 Single Bedrooms
- Eat In Kitchen Diner
- Private Garden
- Chain Free
- Family Bathroom Plus WC
- Excellent Potential to Update
- Close to Transport and Amenities



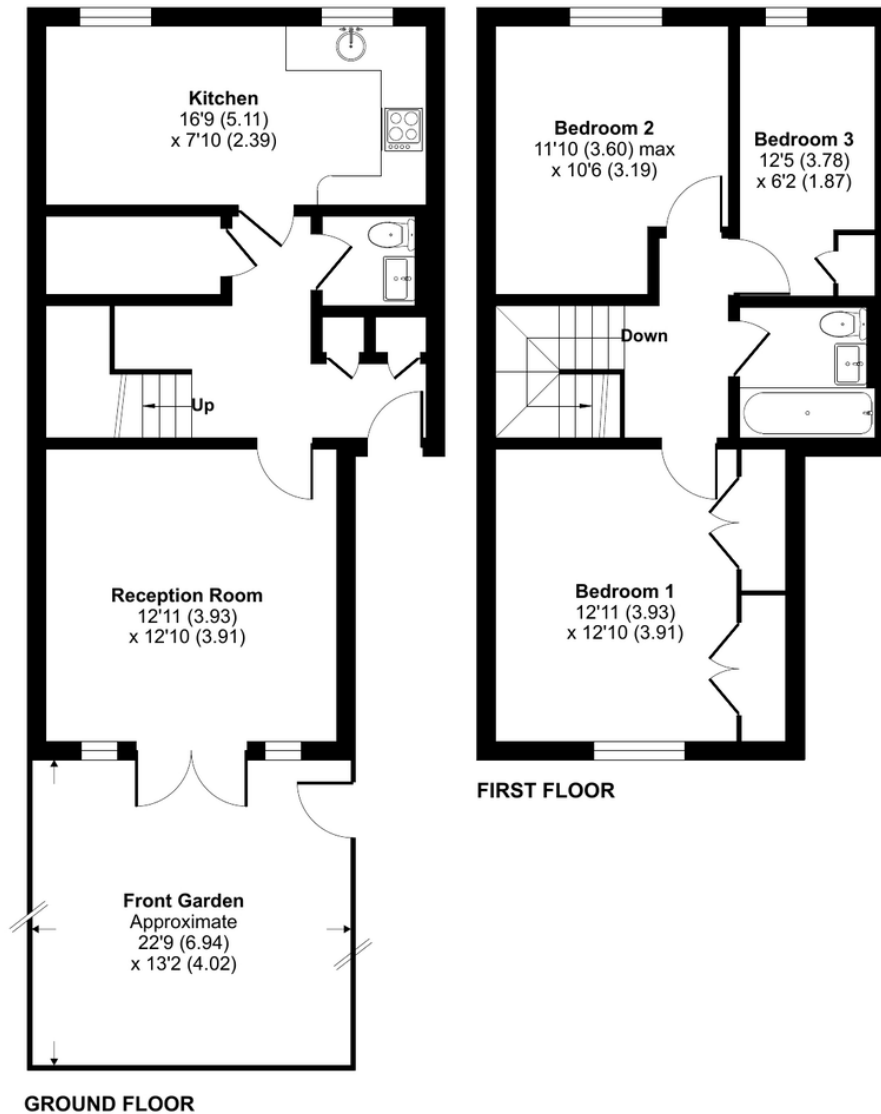




Mowatt Close, London, N19

Approximate Area = 952 sq ft / 88.4 sq m
For identification only - Not to scale

**DAVID
ANDREW** | your
most
valuable
asset



Score	Energy rating	Current	Potential
92+	A		
81-91	B		
69-80	C		76 C
55-68	D	66 D	
39-54	E		
21-38	F		
1-20	G		

Archway Office

671 Holloway Road
London, N19 5SE

T (0)20 7619 3750

Highbury Office

90 Highbury Park
London N5 2XE

T (0)20 7354 9111

Stroud Green Office

167 Stroud Green Road
London N4 3PZ

T (0)20 7281 2000

General Contact

E info@davidandrew.co.uk



Agent's Note:

Whilst Care has been exercised in the preparation of these sales particulars, statements about the property must not be relied upon as representations of statements or fact. Prospective purchasers must make and rely upon their own enquiries and those of professional representatives. The company accept not liability for any error contained in these particulars.

Floor plan produced in accordance with RICS Property Measurement 2nd Edition, Incorporating International Property Measurement Standards (IPMS2 Residential). © nchecom 2025. Produced for David Andrew. REF: 1249816

