



Marlborough Road, N19 4HU

£575,000
Leasehold



Marlborough Road

£575,000

Leasehold

This spacious two double bedroom garden maisonette, an ex-local authority property, spans 944 sqft / 87.7 sqm across the first and second floors within a desirable development. The flat provides generously-sized living spaces, complemented by a large private garden facing southeast, a spacious reception/dining area, a large separate kitchen, two double bedrooms, single third bedroom, a stylish bathroom and a separate toilet.

It further benefits a large private garden with a garden shed and direct access to Cornwallis Road an abundance of natural light, and ample storage space throughout.

Blenheim Court is located within walking distance of Upper Holloway overground station and Archway underground station (Northern Line) as well as the open spaces at, Parkland Walk, Elthorne Park and Whittington Park. Holloway Road offers a wealth of local shops, bars, restaurants, cafes other amenities.

- 944 sqft / 87.7 sqm
- Beautifully decorated
- Modern kitchen / diner
- Arranged over 2 floors
- Three bedrooms
- Private garden
- Great transport links
- Excellent amenities nearby

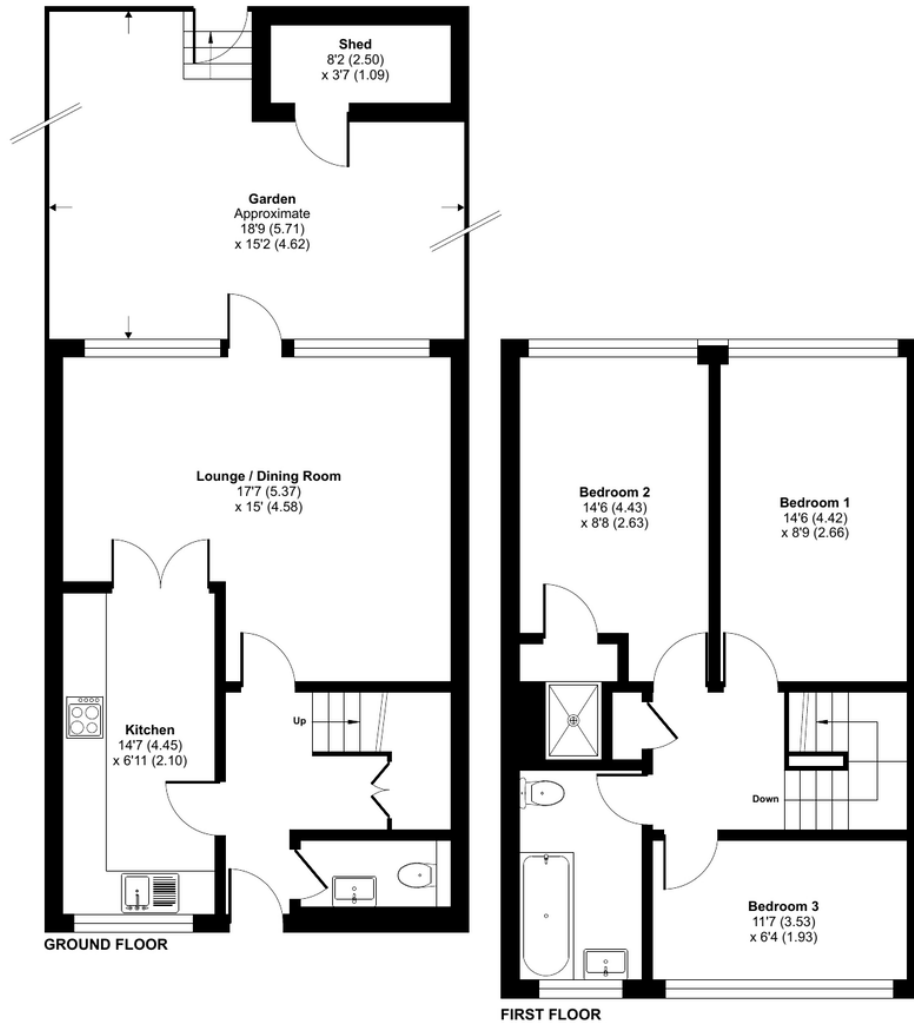




Blenheim Court, Marlborough Road, London, N19



Approximate Area = 944 sq ft / 87.7 sq m
Shed = 29 sq ft / 2.6 sq m
Total = 973 sq ft / 90.3 sq m
For identification only - Not to scale



DAVID ANDREW

your most valuable asset

Archway Office

671 Holloway Road
London, N19 5SE

T (0)20 7619 3750

Highbury Office

90 Highbury Park
London N5 2XE

T (0)20 7354 9111

Stroud Green Office

167 Stroud Green Road
London N4 3PZ

T (0)20 7281 2000

General Contact

E info@davidandrew.co.uk



Agent's Note:

Whilst Care has been exercised in the preparation of these sales particulars, statements about the property must not be relied upon as representations of statements or fact. Prospective purchasers must make and rely upon their own enquiries and those of professional representatives. The company accept not liability for any error contained in these particulars.



Floor plan produced in accordance with RICS Property Measurement 2nd Edition, Incorporating International Property Measurement Standards (IPMS2 Residential). © nchecon 2024. Produced for David Andrew. REF: 1207578

