



Duncombe Road, N19 3DP

£380,000  
Leasehold



# Duncombe Road

£380,000

Leasehold

We are proud to offer this truly exceptional 1-bedroom flat on the second floor of this ex-local authority development. The property has been recently renovated to a very high standard and offers a large, double bedroom with walk-in wardrobe, sizeable reception room with high ceilings and private balcony, a spacious kitchen with stone worktops and new appliances, a modern bathroom and ample storage. The floors have also been replaced throughout and the flat is being sold with no onward chain. The property further benefits from communal heating and hot water which is paid for through the monthly service charge.

Duncombe Road is well located with easy access to Archway underground station (Northern Line), Upper Holloway overground station and the shops and amenities on Holloway Road and the surrounding area.

- 586 sqft / 54.4 sqm
- 1 bedroom
- Recently refurbished
- Balcony
- Spacious kitchen
- Modern bathroom
- Leasehold
- Chain free

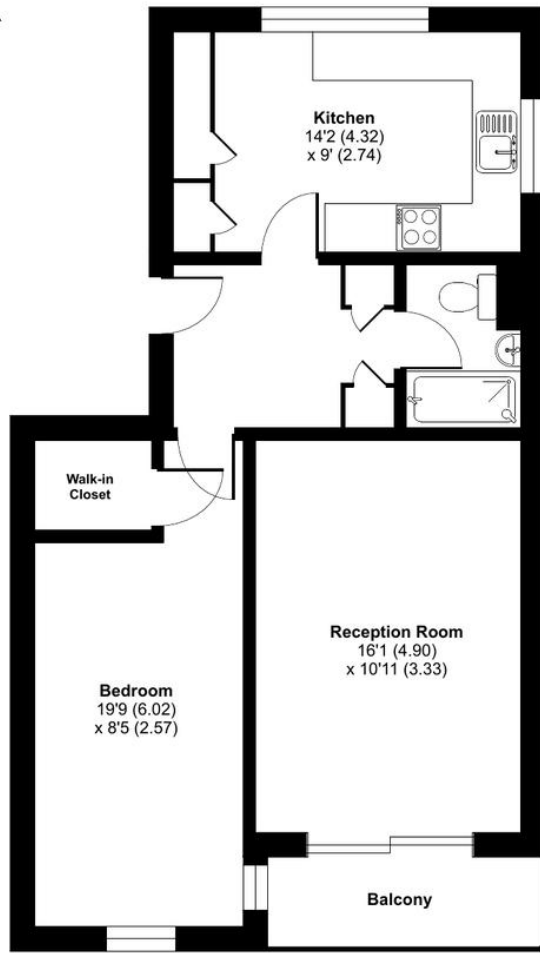






# Duncombe Road, London, N19

Approximate Area = 586 sq ft / 54.4 sq m  
For identification only - Not to scale



THIRD FLOOR

# DAVID ANDREW

your most valuable asset

## Archway Office

671 Holloway Road  
London, N19 5SE

T (0)20 7619 3750

## Highbury Office

90 Highbury Park  
London N5 2XE

T (0)20 7354 9111

## Stroud Green Office

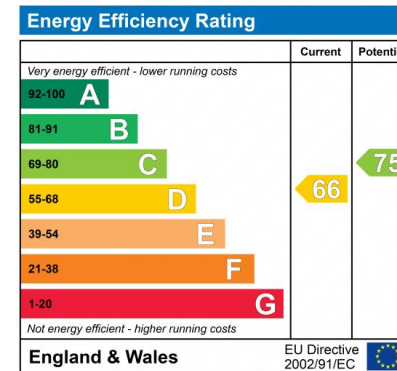
167 Stroud Green Road  
London N4 3PZ

T (0)20 7281 2000

## General Contact

E [info@davidandrew.co.uk](mailto:info@davidandrew.co.uk)

W [www.davidandrew.co.uk](http://www.davidandrew.co.uk)



### Agent's Note:

Whilst Care has been exercised in the preparation of these sales particulars, statements about the property must not be relied upon as representations of statements or fact. Prospective purchasers must make and rely upon their own enquiries and those of professional representatives. The company accept not liability for any error contained in these particulars.



Certified  
Property  
Measurer

Floor plan produced in accordance with RICS Property Measurement Standards incorporating International Property Measurement Standards (IPMS2 Residential). © nchecom 2024.  
Produced for David Andrew. REF: 1154337

