



Portland Rise, N4 2PT

£800,000 Share of Freehold



Introducing a beautifully maintained and well-proportioned garden flat situated on the raised ground floor of a charming Victorian conversion. With 872 sqft (81 sqm) of internal space, this bright and spacious home boasts two double bedrooms and an impressive reception room that opens onto a private rear garden. The master bedroom is spacious and bright, complete with an en-suite shower while the generous second double bedroom provides a bright leafy outlook. Additionally, the flat includes a family bathroom and a modern fitted kitchen. Located on the desirable and peaceful Portland Rise, this property is close to restaurants, cafes, four local parks, and excellent transport links.

- Very Well Presented
- Lovely Private Garden
- Two Double Bedrooms
- 872 sqft / 81 sqm
- Share of Freehold
- Excellent transport links
- Close to four local parks
- Service Charge £1,925 p.a

Highbury

To arrange a viewing please contact:

Highbury office

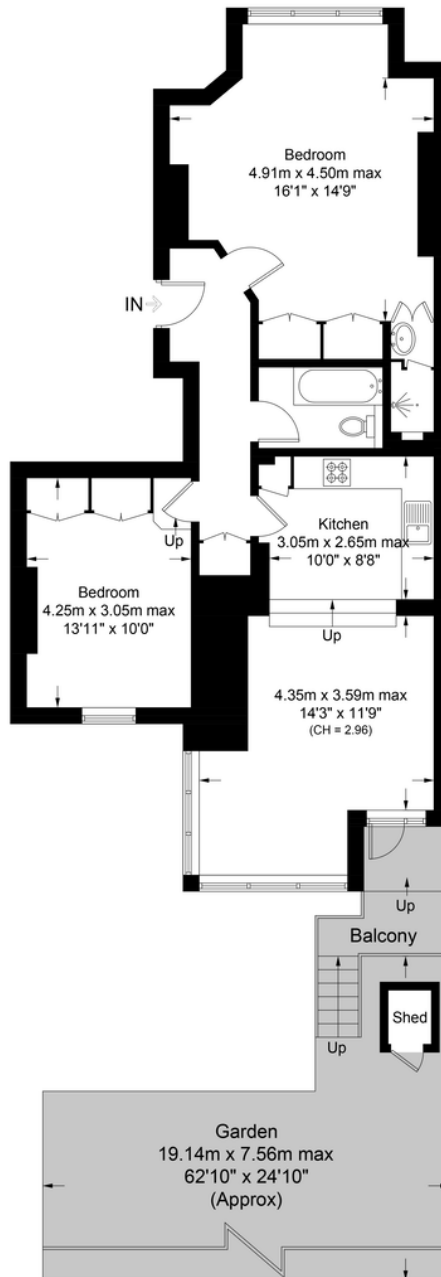
90 Highbury Park
London, N5 2XE

T (0)20 7354 9111
E highbury@davidandrew.co.uk



Portland Rise, N4

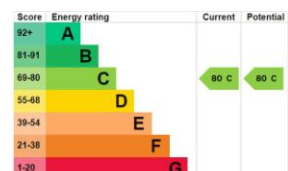
Approximate Gross Internal Area = 872 sq ft / 81.0 sq m
(Excluding Shed)



**Certified
Property
Measurer**

This plan is for layout guidance only. Not drawn to scale unless stated. Windows and door openings are approximate. Whilst every care is taken in the preparation of this plan, please check all dimensions, shapes and compass bearings before making any decisions reliant upon them. (ID1104197)

**DAVID
ANDREW** | your
most
valuable
asset



Agent's Note:

Whilst Care has been exercised in the preparation of these particulars, statements about the property must not be relied upon as representations of statement or fact. Prospective applicants must make and rely upon their own enquiries and those of their professional representatives. The company accepts no liability for any error contained in these particulars.

Archway office

671 Holloway Road
London, N19 5SE

T (0)20 7619 3750
E archway@davidandrew.co.uk

Highbury office

90 Highbury Park
London, N5 2XE

T (0)20 7354 9111
E highbury@davidandrew.co.uk

Stroud Green office

167 Stroud Green Road
London, N4 3PZ

T (0)20 7281 2000
E stroudgreen@davidandrew.co.uk