



Seven Sisters Road, N4 2PQ

Asking Price Of £450,000  
Leasehold





# Seven Sisters Road

Asking Price Of £450,000

Leasehold

Spacious Two double bedroom apartment located on the second floor within a modern development, measuring 615sqft/57.1sqm of living space. The apartment is arranged on one level with a private balcony off the reception facing the rear of the development. The apartment also benefits a large reception room, semi open plan kitchen, three piece bathroom suite and is located very close to Finsbury Park & Manor House stations. The apartment entrance is immediately opposite Finsbury Park, minutes away from Woodberry Wetlands & Clissold Park are e all close by. Excellent transport links are provided via Manor House, Finsbury Park & Arsenal stations & several local bus routes. Chain Free Sale.

- Two Double Bedrooms
- Private Balcony
- 615sqft/57.1sqm
- Epc Rating B
- Second Floor
- Close to Good Transport Links
- Mins walk to Finsbury Park
- Close to Local shops



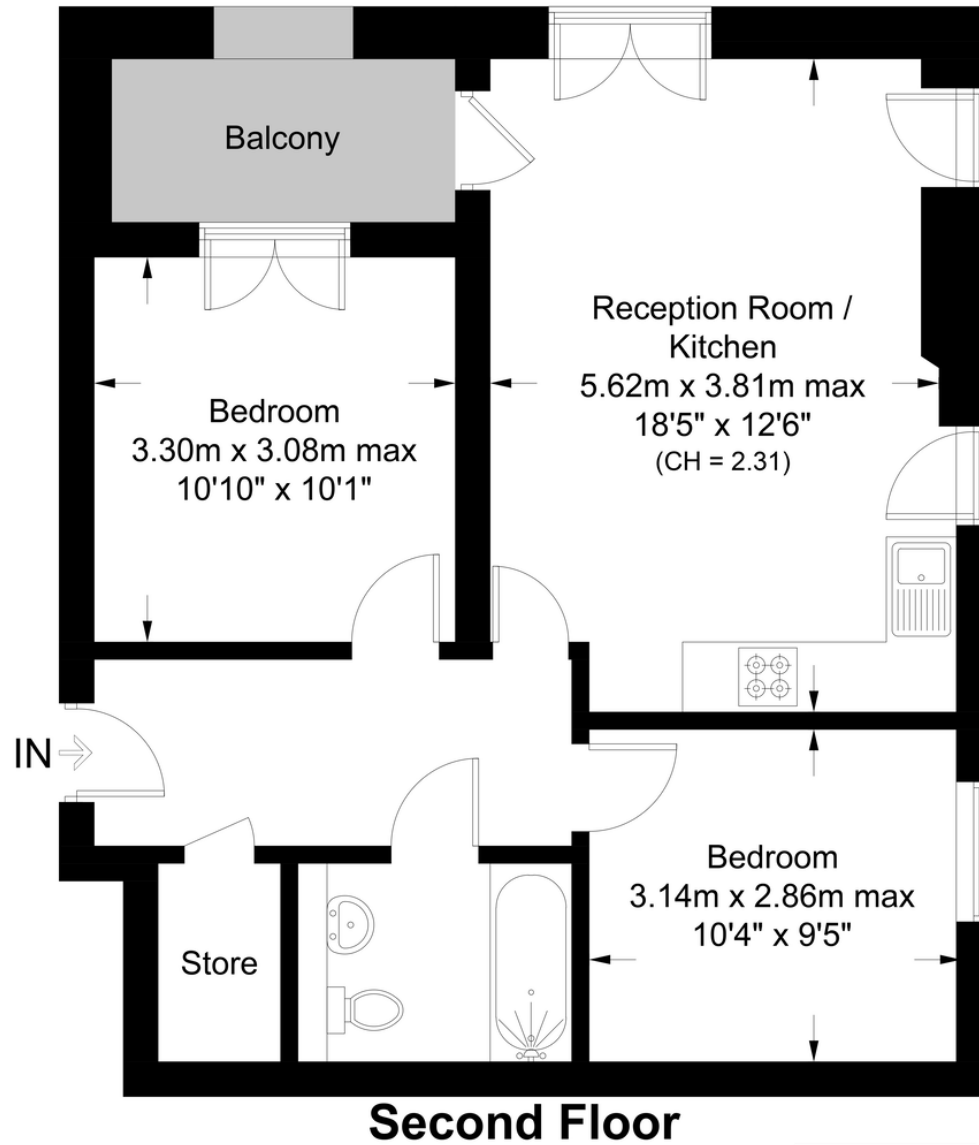






## Seven Sisters Road, N4

Approximate Gross Internal Area = 615 sq ft / 57.1 sq m



### Second Floor



**Certified  
Property  
Measurer**

This plan is for layout guidance only. Not drawn to scale unless stated. Windows and door openings are approximate. Whilst every care is taken in the preparation of this plan, please check all dimensions, shapes and compass bearings before making any decisions reliant upon them. (ID1070612)

DAVID ANDREW | your most valuable asset

# DAVID ANDREW

your most valuable asset

#### Archway Office

671 Holloway Road  
London, N19 5SE

T (0)20 7619 3750

#### Highbury Office

90 Highbury Park  
London N5 2XE

T (0)20 7354 9111

#### Stroud Green Office

167 Stroud Green Road  
London N4 3PZ

T (0)20 7281 2000

#### General Contact

E [info@davidandrew.co.uk](mailto:info@davidandrew.co.uk)

W [www.davidandrew.co.uk](http://www.davidandrew.co.uk)

Score	Energy rating	Current	Potential
92+	A		
81-91	B	82 B	82 B
69-80	C		
55-68	D		
39-54	E		
21-38	F		
1-20	G		

#### Agent's Note:

Whilst Care has been exercised in the preparation of these sales particulars, statements about the property must not be relied upon as representations of statements or fact. Prospective purchasers must make and rely upon their own enquiries and those of professional representatives. The company accept not liability for any error contained in these particulars.

