



Highbury Quadrant, N5 2TH

£475,000
Leasehold



Highbury

£475,000

Leasehold

Nestled peacefully on a tree-lined street in Highbury, this charming two-bedroom flat offers a comfortable living space spanning 660 square feet (61.3sqm). Situated on the second floor of a purpose-built building, the apartment boasts a well-maintained interior filled with natural light. Featuring two spacious double bedrooms with ample storage, alongside a modern fitted kitchen and bathroom, the property prioritizes practicality and comfort.

Conveniently located just moments away from the serene Clissold Park and a short walk from the bustling Highbury Barn, known for its local amenities, the residence offers a relaxed lifestyle. Transportation is easily accessible, with a variety of bus routes nearby, as well as the Arsenal underground station and Highbury & Islington, providing convenient links to the City.

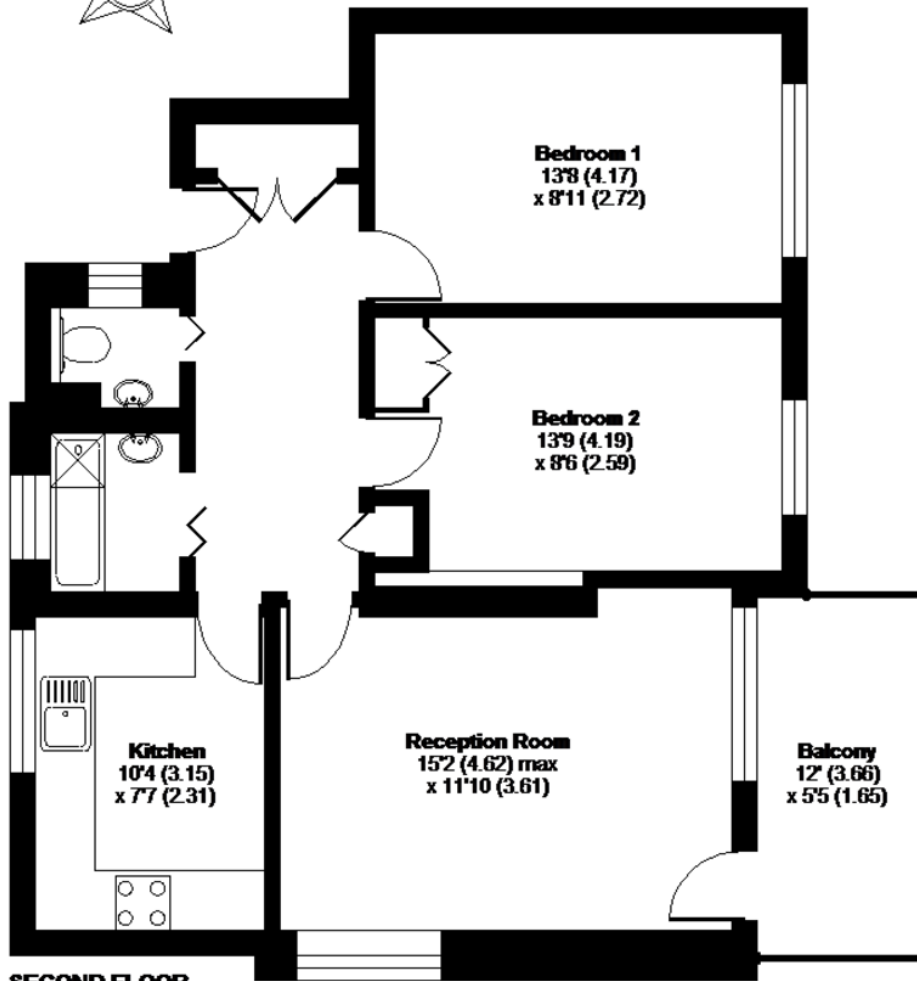
- Two double bedroom
- 660sqft / 61.3sqm
- Balcony
- EPC Rating B
- Lift access
- Good condition
- Close to Clissold Park
- Good transport links





Highbury Quadrant, London, N5

APPROX. GROSS INTERNAL FLOOR AREA 660 SQ FT 61.3 SQ METRES



SECOND FLOOR

DAVID ANDREW

your most valuable asset

Archway Office

671 Holloway Road
London, N19 5SE

T (0)20 7619 3750

Highbury Office

90 Highbury Park
London N5 2XE

T (0)20 7354 9111

Stroud Green Office

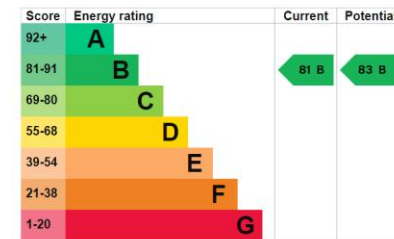
167 Stroud Green Road
London N4 3PZ

T (0)20 7281 2000

General Contact

E info@davidandrew.co.uk

W www.davidandrew.co.uk



Agent's Note:

Whilst Care has been exercised in the preparation of these sales particulars, statements about the property must not be relied upon as representations of statements or fact. Prospective purchasers must make and rely upon their own enquiries and those of professional representatives. The company accept not liability for any error contained in these particulars.



Whilst every attempt has been made to ensure the accuracy of the floor plan contained here, measurements of doors, windows and rooms are approximate and no responsibility is taken for any error, omission or misstatement. These plans are for representation purposes only as defined by RICS Code of Measuring Practice and should be used as such by any prospective purchaser. Specifically no guarantee is given on the total square footage of the property if quoted on this plan. Any figure given is for initial guidance only and should not be relied on as a basis of valuation.

Copyright nichecom.co.uk 2016 Produced for David Andrew REF : 120355

