



Gillespie Road, N5 1LH

£1,400,000 Freehold



A superbly located mid-terraced, Victorian family home in great location in Highbury. This three storey house is offered chain free and offers 1381sqft/128.3sqm of living space across the three levels. The house also benefits of double reception room across the lower levels of this house extending on to a kitchen dining area and then on to a private 42 ft mature garden. In addition to this there are two main bathrooms located on the raised ground floor and top floor, four good size bedrooms, which are also located on the raised and top floors of this house. Gillespie Road is a quiet road in close proximity to Gillespie Road School (outstanding ofsted rating), shops and cafes of Highbury, as well

- Four Bedroom House
- Arranged over Three Levels
- Double Reception
- Private Garden
- 1381sqft/128.3sqm
- Great Location
- Good Transport Links
- Chain Free Sale

*Highbury*

To arrange a viewing please contact:

Highbury office

90 Highbury Park  
London, N5 2XE

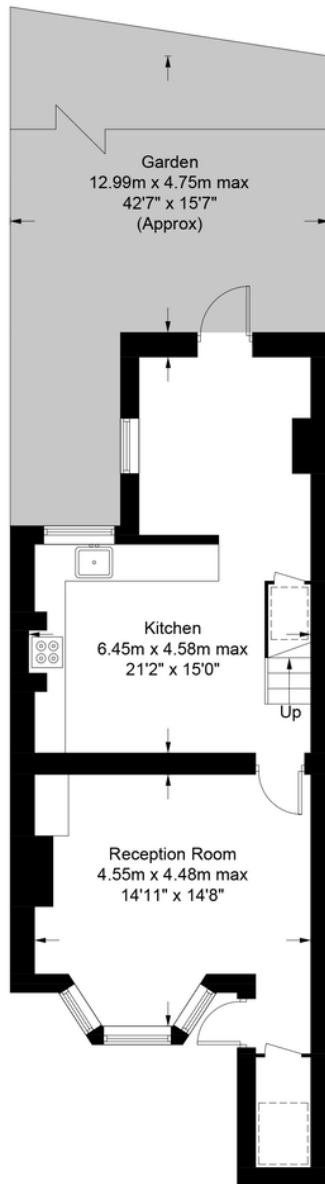
T (0)20 7354 9111  
E [highbury@davidandrew.co.uk](mailto:highbury@davidandrew.co.uk)

## Gillespie Road, N5

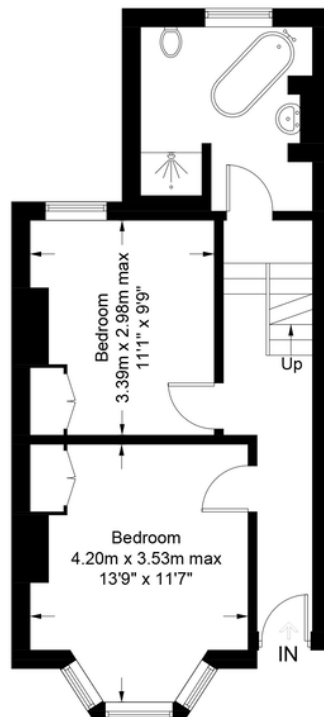
Approximate Gross Internal Area  
(Excluding Reduced Headroom)

1364 sq ft / 126.7 sq m

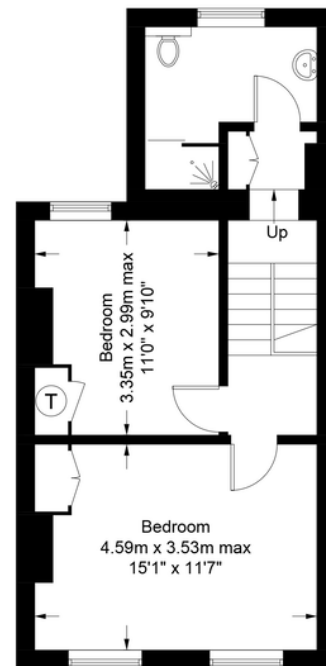
Reduced Headroom = 17 sq ft / 1.6 sq m



Lower Ground Floor



Ground Floor



First Floor

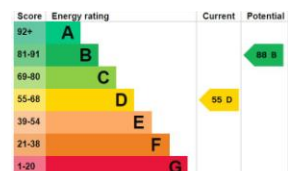


**Certified  
Property  
Measurer**

This plan is for layout guidance only. Not drawn to scale unless stated. Windows and door openings are approximate. Whilst every care is taken in the preparation of this plan, please check all dimensions, shapes and compass bearings before making any decisions reliant upon them. (ID991445)

**DAVID  
ANDREW**

Your most  
valuable  
asset



**Agent's Note:**  
Whilst Care has been exercised in the preparation of these particulars, statements about the property must not be relied upon as representations of statement or fact. Prospective applicants must make and rely upon their own enquiries and those of their professional representatives. The company accepts no liability for any error contained in these particulars.

### Archway office

671 Holloway Road  
London, N19 5SE

T (0)20 7619 3750  
E archway@davidandrew.co.uk

### Highbury office

90 Highbury Park  
London, N5 2XE

T (0)20 7354 9111  
E highbury@davidandrew.co.uk

### Stroud Green office

167 Stroud Green Road  
London, N4 3PZ

T (0)20 7281 2000  
E stroudgreen@davidandrew.co.uk