



Somerfield Road, N4 2JJ

£2,850 pcm



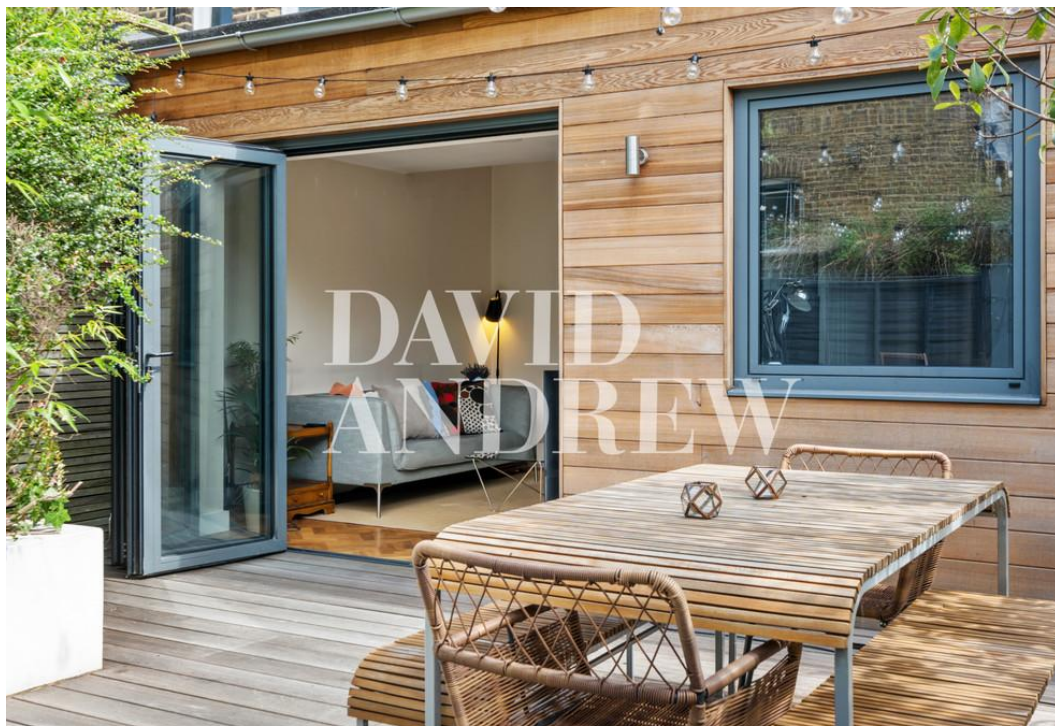
Somerfield Road

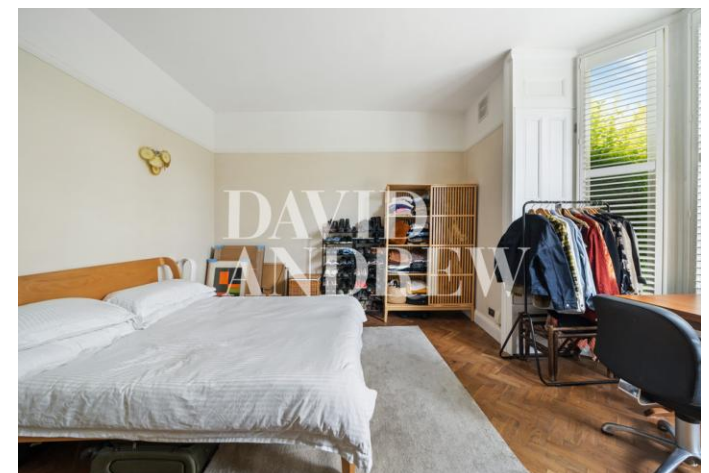
£2,850 pcm

Beautifully presented two-bedroom garden flat located on this impressive end-of-terrace Victorian conversion in N4. Offering 780 sq.ft / 72 Sqm of living space, including a spacious semi-open plan living room and kitchen diner with direct access via a bi-folding door to a stunning private garden with plenty of seating and designed with low maintenance in mind, perfect for entertaining. Further features include two double bedrooms and a modern bathroom with a shower, skylights period features blended perfectly with modern contemporary styling.

This property is ideally located on a quiet turning a short walk from both Finsbury Park Tube and Arsenal tube station and a short stroll to Clissold Park and Highbury Fields perfect for two sharers or a couple looking for a spacious flat. Available 28th August 2023

- Two bedroom apartment
- Stunning private garden
- Spacious open plan living space
- Modern finished throughout
- Plenty of natural light
- 780 sq.ft / 72 Sqm
- Part furnished (flexible)
- Available 28th August 2023





Notes

Archway Office

671 Holloway Road
London, N19 5SE

T (0)20 7619 3750

Highbury Office

90 Highbury Park
London N5 2XE

T (0)20 7354 9111

Stroud Green Office

167 Stroud Green Road
London N4 3PZ

T (0)20 7281 2000

General Contact

E info@davidandrew.co.uk

W www.davidandrew.co.uk

Score	Energy rating	Current	Potential
92+	A		
81-91	B		
69-80	C		
55-68	D	63 D	75 C
39-54	E		
21-38	F		
1-20	G		

Agent's Note:

Whilst Care has been exercised in the preparation of these sales particulars, statements about the property must not be relied upon as representations of statements or fact. Prospective purchasers must make and rely upon their own enquiries and those of professional representatives. The company accept not liability for any error contained in these particulars.

