



Cornelia Street, N7 8BA

£3,500 pcm



# Cornelia Street

£3,500 pcm

A unique and spacious three-bedroom maisonette with two bathrooms in this end-of-terrace house, boasting a superb location in the fashionable heart of Islington N7.

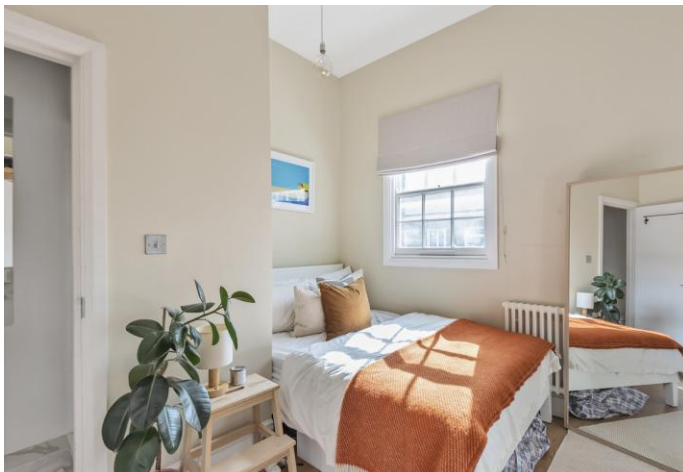
This spacious accommodation is set over three floors with contemporary styling and modern interiors throughout. Internally, the property offers an open plan kitchen and living room, three double bedrooms - one with an en suite - and a separate modern bathroom.

Cornelia Street is ideally placed for access to Caledonian Road & Barnsbury (overground), Highbury & Islington station (overground), Victoria and Great Northern line, and Caledonian Road (Piccadilly line) providing excellent links around London. You'll find Upper Street, Angel, and Kings Cross all within close proximity - providing an array of shops, bars, cafes, and amenities. The greenery of Paradise Park, Highbury Fields, and Caledonian Park are also just a short walk away. Available Now, Flexible Furnishings.

- Three Double Bedrooms
- Open Plan Living
- Two Bathrooms
- Arranged Over Three Floors
- 812sqft/75sqm
- EPC Rating: E
- Flexible Furnishings
- Available Now







# Notes

## Archway Office

671 Holloway Road  
London, N19 5SE

T (0)20 7619 3750

## Highbury Office

90 Highbury Park  
London N5 2XE

T (0)20 7354 9111

## Stroud Green Office

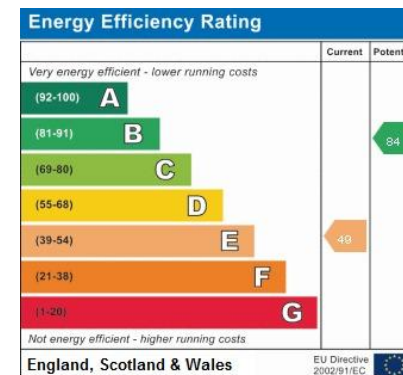
167 Stroud Green Road  
London N4 3PZ

T (0)20 7281 2000

## General Contact

E [info@davidandrew.co.uk](mailto:info@davidandrew.co.uk)

W [www.davidandrew.co.uk](http://www.davidandrew.co.uk)



### Agent's Note:

Whilst Care has been exercised in the preparation of these sales particulars, statements about the property must not be relied upon as representations of statements or fact. Prospective purchasers must make and rely upon their own enquiries and those of professional representatives. The company accept not liability for any error contained in these particulars.

