



East Ferry Road, E14 3NW

£2,500 pcm



East Ferry Road

£2,500 pcm

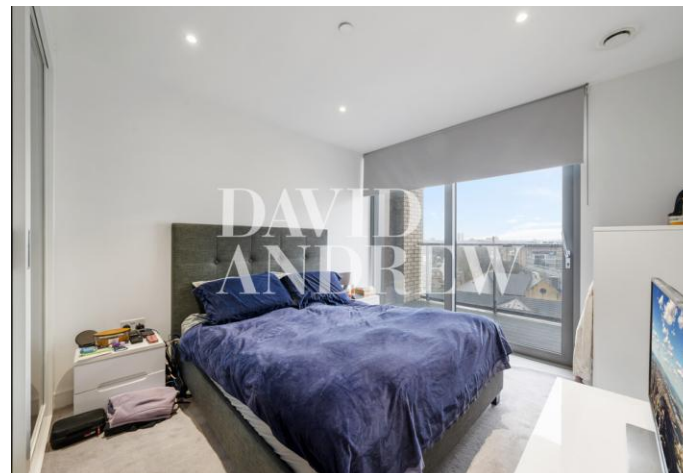
Offering a beautifully presented one-bedroom modern apartment arranged over the 7th-floor secure development in Canary Wharf.

This seventh-floor apartment offers 49 Sqm / 530sq.ft of bright modern living. Features include a generous open plan lounge and kitchen with direct access to a spacious private terrace, a large double bedroom with built-in wardrobes also, access to the private terrace, plus three-piece fully tiled bathroom suite with both bath and shower facilities.

The building offers a 24-hour concierge service and a resident's gym and is approximately 1 minute's walk from Crossharbour DLR station for access to Canary Wharf and the City of London. The Canary Wharf Estate is located about 0.8 miles from the building offering access to Central London via the Jubilee Line. Numerous cafes, restaurants and shops are nearby, including a Tesco Express.

- Modern one bedroom apartment
- Private roof terrace
- 24-hour concierge service
- Residents Gym / gated entrance
- Excellent local transport links
- 49 Sqm / 530 Sq. ft
- Furnished / part furnished
- Available





Notes

**DAVID
ANDREW** | your
most
valuable
asset

Archway Office

671 Holloway Road
London, N19 5SE

T (0)20 7619 3750

Highbury Office

90 Highbury Park
London N5 2XE

T (0)20 7354 9111

Stroud Green Office

167 Stroud Green Road
London N4 3PZ

T (0)20 7281 2000

General Contact

E info@davidandrew.co.uk

W www.davidandrew.co.uk

| Score | Energy rating | Current | Potential |
|-------|---------------|---------|-----------|
| 92+ | A | | |
| 81-91 | B | 85 B | 85 B |
| 69-80 | C | | |
| 55-68 | D | | |
| 39-54 | E | | |
| 21-38 | F | | |
| 1-20 | G | | |

Agent's Note:

Whilst Care has been exercised in the preparation of these sales particulars, statements about the property must not be relied upon as representations of statements or fact. Prospective purchasers must make and rely upon their own enquiries and those of professional representatives. The company accept not liability for any error contained in these particulars.

