



Leigh Road, N5 1ST

£4,750 pcm





# Leigh Road

£4,750 pcm

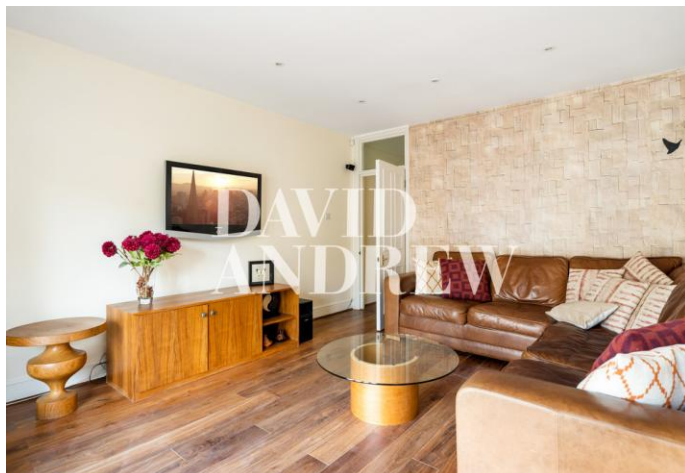
New decorated three-bedroom mid-terrace townhouse arranged over three floors located on a quiet turning of N5. This house offers 1604 sq ft / 149 Sqm of Spacious living, including a generous kitchen diner leading to a private patio space, a separate living room, three double bedrooms, two bathrooms ( 1 ensuite ), and a garage/study space.

Leigh Road is nestled between the green spaces of Highbury Fields and the highly renowned local amenities of Highbury Barn, including Godfrey's Butchers, La Fromagerie, Da Mario's Deli, Bourne Fishmongers, and Wine Rack Vintners. Transport links are excellent, with Highbury & Islington station (Victoria and Overground) a short walk through the fields, Drayton Park Station close by taking you directly into the City, and Arsenal tube station (Piccadilly line) am ample bus routes. Offered Part furnished Available immediately.

- Three Bedroom House
- Private Patio Garden
- Separate spacious kitchen diner
- Two bathrooms one en-suite
- Idyllic location
- 1604 sq.ft / 149 Sqm
- Part furnished
- Available now







# Notes

**DAVID  
ANDREW** | your  
most  
valuable  
asset

## Archway Office

671 Holloway Road  
London, N19 5SE

T (0)20 7619 3750

## Highbury Office

90 Highbury Park  
London N5 2XE

T (0)20 7354 9111

## Stroud Green Office

167 Stroud Green Road  
London N4 3PZ

T (0)20 7281 2000

## General Contact

E [info@davidandrew.co.uk](mailto:info@davidandrew.co.uk)

W [www.davidandrew.co.uk](http://www.davidandrew.co.uk)

Score	Energy rating	Current	Potential
92+	A		
81-91	B		83   B
69-80	C		
55-68	D	57   D	
39-54	E		
21-38	F		
1-20	G		

### Agent's Note:

Whilst Care has been exercised in the preparation of these sales particulars, statements about the property must not be relied upon as representations of statements or fact. Prospective purchasers must make and rely upon their own enquiries and those of professional representatives. The company accept not liability for any error contained in these particulars.

