



Pollard Close, N7 9SX

£375,000  
Leasehold





# Pollard Close

£375,000

Leasehold

A spacious, two-bedroom, top-floor flat in a highly sought-after area of Holloway. Comprising a large kitchen/light-filled living room, two bedrooms, storage room and a modern three-piece bathroom. The flat boasts stunning views of this picturesque part of London - viewings are highly recommended.

Holloway Road Station (Piccadilly Line) is less than a 5-minute walk away; Highbury & Islington Station is less than 15 minutes away. It's also just a short walk from an array of restaurants, bars, parks, and shops.

- 546 sqft / 50.7 sqm
- 2 bedrooms
- Large living/dining room
- Chain free
- Stunning views
- Purpose-built
- Close to transport links
- Excellent amenities nearby



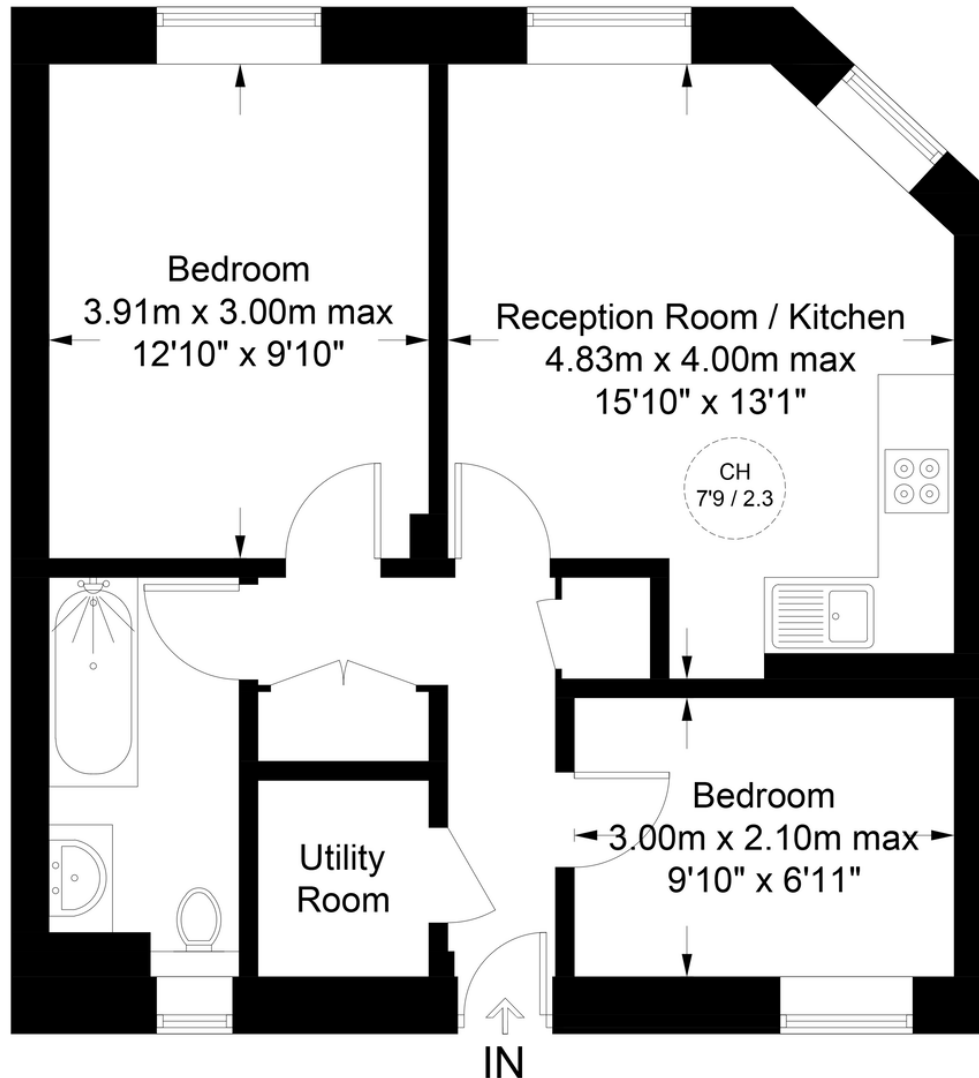






## Pollard Close, N7

Approximate Gross Internal Area = 546 sq ft / 50.7 sq m



### Seventh Floor

**Certified  
Property  
Measurer**

This plan is for layout guidance only. Not drawn to scale unless stated. Windows and door openings are approximate. Whilst every care is taken in the preparation of this plan, please check all dimensions, shapes and compass bearings before making any decisions reliant upon them. (ID934517)

**DAVID  
ANDREW** your most valuable asset

# DAVID ANDREW

your most valuable asset

Archway Office

671 Holloway Road  
London, N19 5SE

T (0)20 7619 3750

Highbury Office

90 Highbury Park  
London N5 2XE

T (0)20 7354 9111

Stroud Green Office

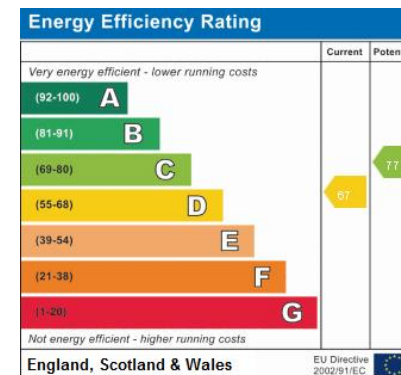
167 Stroud Green Road  
London N4 3PZ

T (0)20 7281 2000

General Contact

E [info@davidandrew.co.uk](mailto:info@davidandrew.co.uk)

W [www.davidandrew.co.uk](http://www.davidandrew.co.uk)



#### Agent's Note:

Whilst Care has been exercised in the preparation of these sales particulars, statements about the property must not be relied upon as representations of statements or fact. Prospective purchasers must make and rely upon their own enquiries and those of professional representatives. The company accept not liability for any error contained in these particulars.

