



Yonge Park, N4 3NU

£1,800 pcm



# Yonge Park

£1,800 pcm

One-bedroom raised ground floor apartment moments from Finsbury Park in this four storey Victorian conversion.

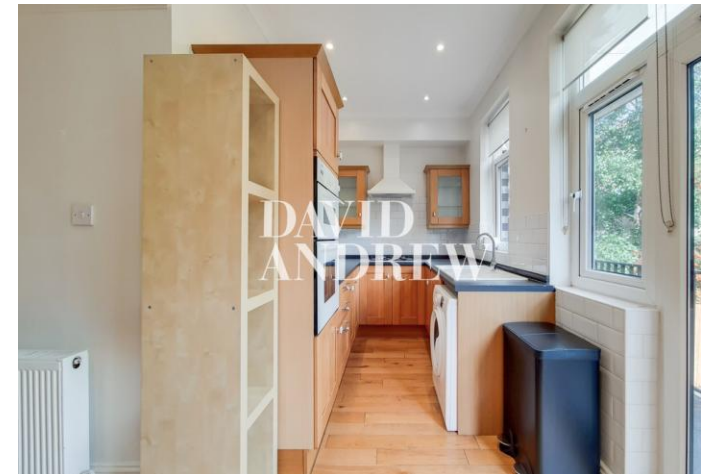
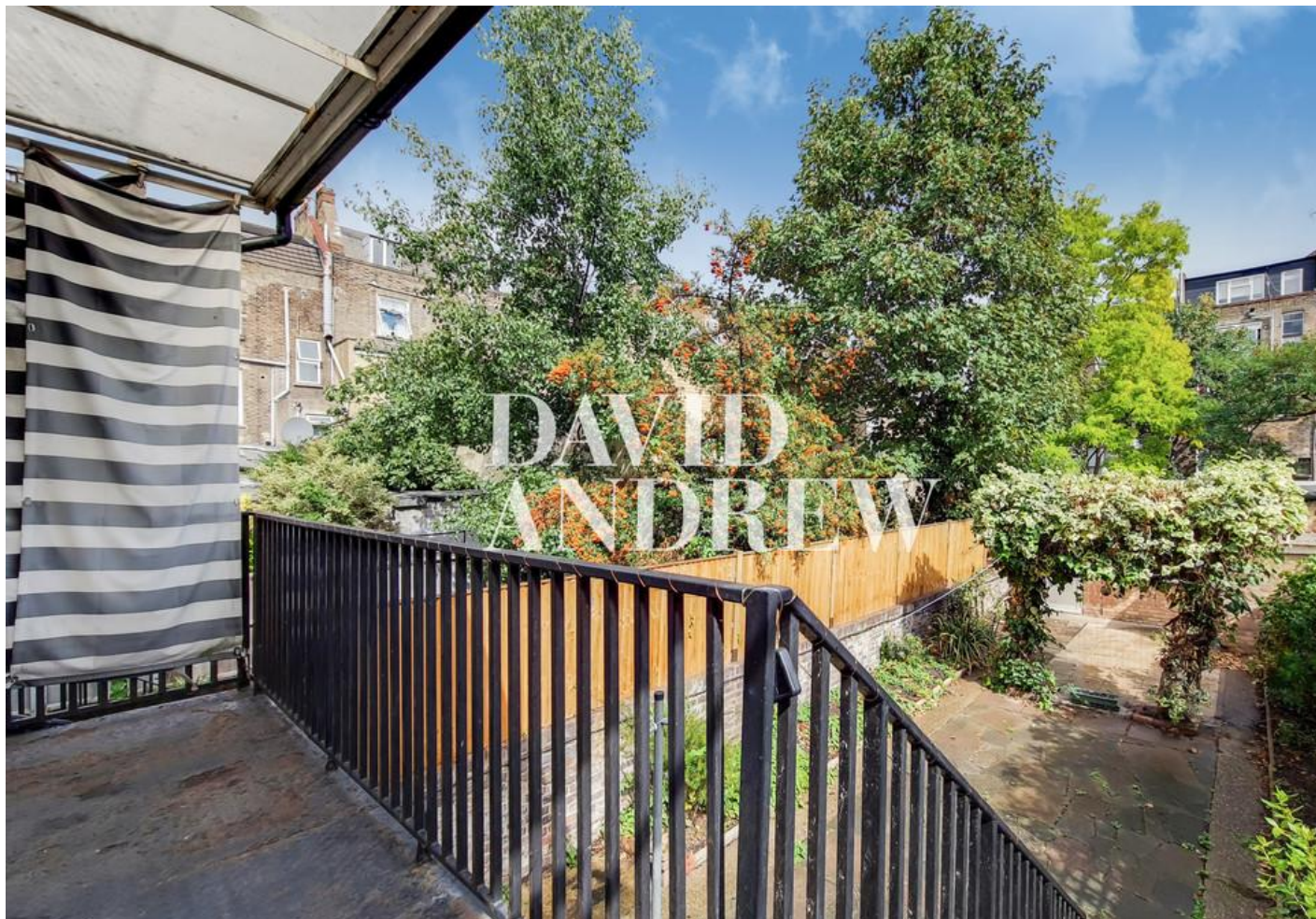
An extremely spacious one-bedroom apartment arranged over the raised ground floor of this period conversion. Offering a large open plan lounge and kitchen leading to a private roof terrace and communal garden space, double bedroom with plenty of storage and modern fully fitted bathroom with both shower and bath facilities.

The apartment is located minutes walk from Finsbury Park tube & rail station, and minutes away from Arsenal tube station. All the shops, bars, restaurants on Blackstock Road are seconds from the property. An abundance of local bus routes is also available with access in and out of the city. Furnished / available now

- One bedroom apartment
- Roof terrace and garden
- Victorian conversion
- Large open plan lounge & kitchen
- generous bedroom with storage
- Located Close To Arsenal & Finsbury Park Stations
- Furnished
- Available now









# Notes

## Archway Office

671 Holloway Road  
London, N19 5SE

T (0)20 7619 3750

## Highbury Office

90 Highbury Park  
London N5 2XE

T (0)20 7354 9111

## Stroud Green Office

167 Stroud Green Road  
London N4 3PZ

T (0)20 7281 2000

## General Contact

E [info@davidandrew.co.uk](mailto:info@davidandrew.co.uk)

W [www.davidandrew.co.uk](http://www.davidandrew.co.uk)

Score	Energy rating	Current	Potential
92+	A		
81-91	B		
69-80	C	72   c	78   c
55-68	D		
39-54	E		
21-38	F		
1-20	G		

### Agent's Note:

Whilst Care has been exercised in the preparation of these sales particulars, statements about the property must not be relied upon as representations of statements or fact. Prospective purchasers must make and rely upon their own enquiries and those of professional representatives. The company accept not liability for any error contained in these particulars.

