



Stapleton Hall Road, N4 4QJ

£1,800 pcm

Stapleton Hall

£1,800 pcm

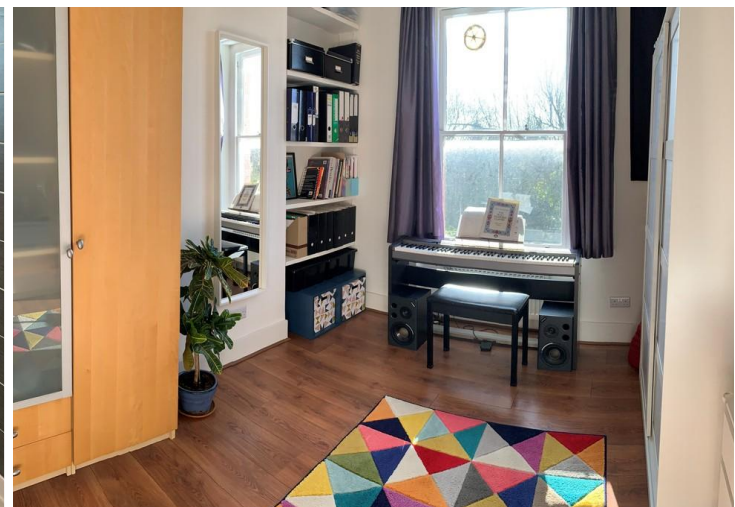
Ideally located in a desirable, tree-lined road, is this well-proportioned and immaculate first-floor conversion in an attractive, end-of-terrace period residence.

Well-maintained by the current owners, the property offers bright and spacious accommodation throughout including an impressive 23'8 living area and two double bedrooms with peaceful, leafy views towards the City. Property features include central gas heating, wooden flooring and period charm.

The property is within close proximity to the array of amenities on Stroud Green Road including Finsbury Park Station (Piccadilly and Victoria tube lines) and Harringay Station (with direct links into Moorgate), and with St Aidan's Primary School (Ofsted

- First-floor conversion set within period residence
- Two Double Bedrooms
- Open Plan Living Area
- Period Features and Charm
- 3 Piece Bathroom
- Minutes walk to Harringay Station
- Close Proximity to Finsbury Park
- EPC Rating: C

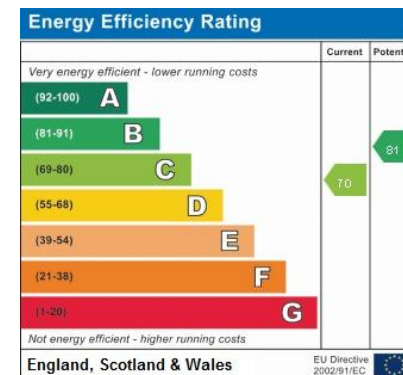




This image shows a blank sheet of white paper with horizontal ruling lines. The lines are evenly spaced and run across the width of the page. There are no margins, text, or other markings on the paper.



W www.davidandrew.co.uk



Whilst Care has been exercised in the preparation of these sales particulars, statements about the property must not be relied upon as representations of statements or fact. Prospective purchasers must make and rely upon their own enquiries and those of professional representatives. The company accept not liability for any error contained in these particulars.

