



Riversdale Road, N5 2SS

£1,600,000  
Freehold



# Riversdale Road

£1,600,000

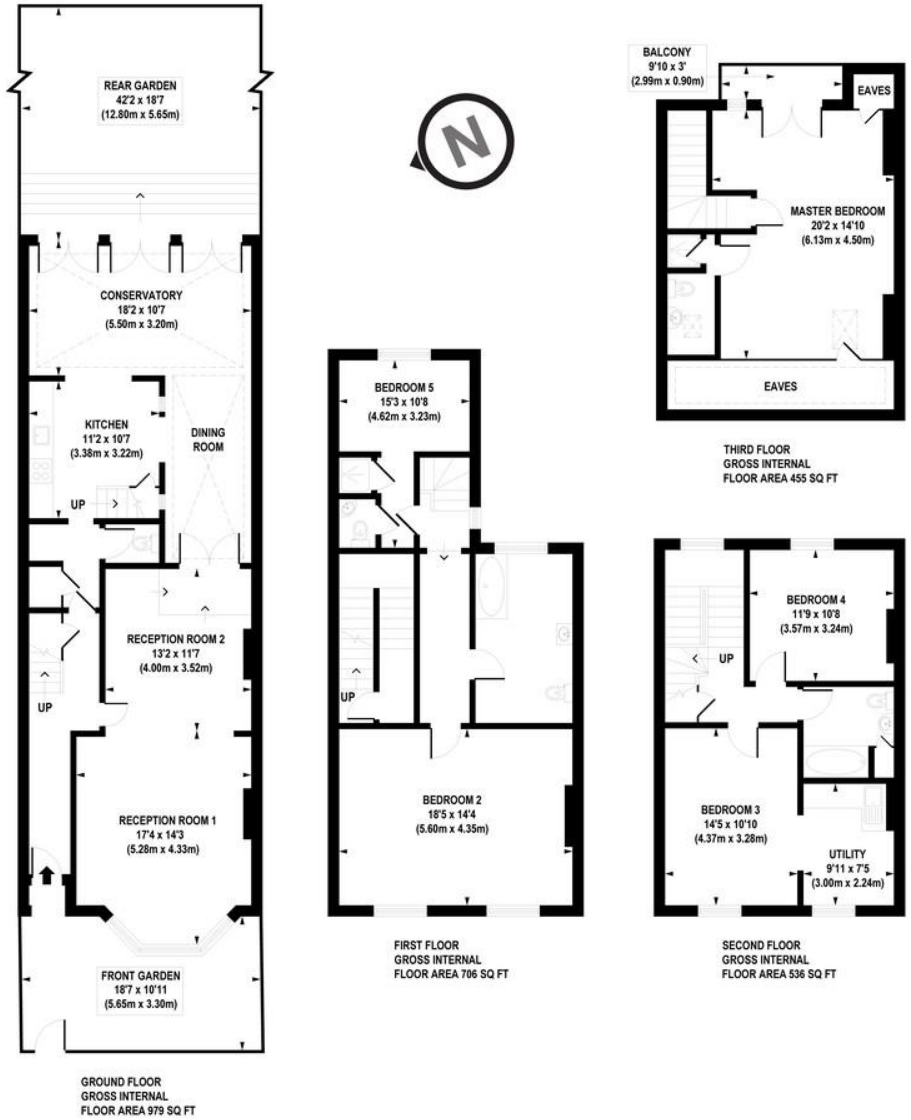
Freehold

A superbly located mid-terraced, Victorian family home in great location of Highbury N5. This large three storey house is offered chain free and offers 2676sqft/248.65sqm of living space across the three levels. The house also benefits of double reception room across the ground floor extending on to a dining area, overlooking a 42 ft mature garden and has a separate kitchen located to the rear, with a cloakroom off the main hallway. In addition to this there is the main bathroom with en-suite to bedroom on the first floor. The second floor has two further bedrooms, with a utility area and the top floor with the main bedroom with en-suite and a balcony facing the rear gardens. Riversdale Road is a quiet road in close proximity to the shops and cafes of Highbury, as well as the pleasant green spaces of Clissold Park & Highbury Fields.

- Five Double Bedroom House
- Three Storey
- 2676sqft/248.65sqm
- Private 42ft Garden
- Chain Free Sale
- Close to Clissold Park
- Mins walk to Highbury Fields
- Great Location



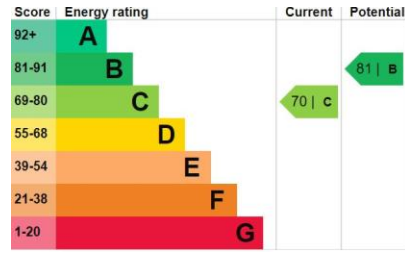




APPROX. GROSS INTERNAL FLOOR AREA 2676 sq. ft / 248.65 sq. m (Including Eaves)  
 APPROX. GROSS INTERNAL FLOOR AREA 2585 sq. ft / 240.16 sq. m (Excluding Eaves)



Floorplan is for illustrative purposes only and is not to scale. Every attempt has been made to ensure the accuracy of the floorplan shown, however all measurements, fixtures, fittings and data shown are an approximate interpretation for illustrative purposes only. Liability for errors, omissions or mis-statement through negligence or otherwise is hereby excluded.



Agent's Note:  
 Whilst Care has been exercised in the preparation of these sales particulars, statements about the property must not be relied upon as representations of statements or fact. Prospective purchasers must make and rely upon their own enquiries and those of professional representatives. The company accept not liability for any error contained in these particulars.

Archway Office

671 Holloway Road  
 London, N19 5SE

T (0)20 7619 3750

Highbury Office

90 Highbury Park  
 London N5 2XE

T (0)20 7354 9111

Stroud Green Office

167 Stroud Green Road  
 London N4 3PZ

T (0)20 7281 2000

General Contact

E info@davidandrew.co.uk

