



Fonthill Road, N4 3HU

£2,250 pcm



Fonthill Road

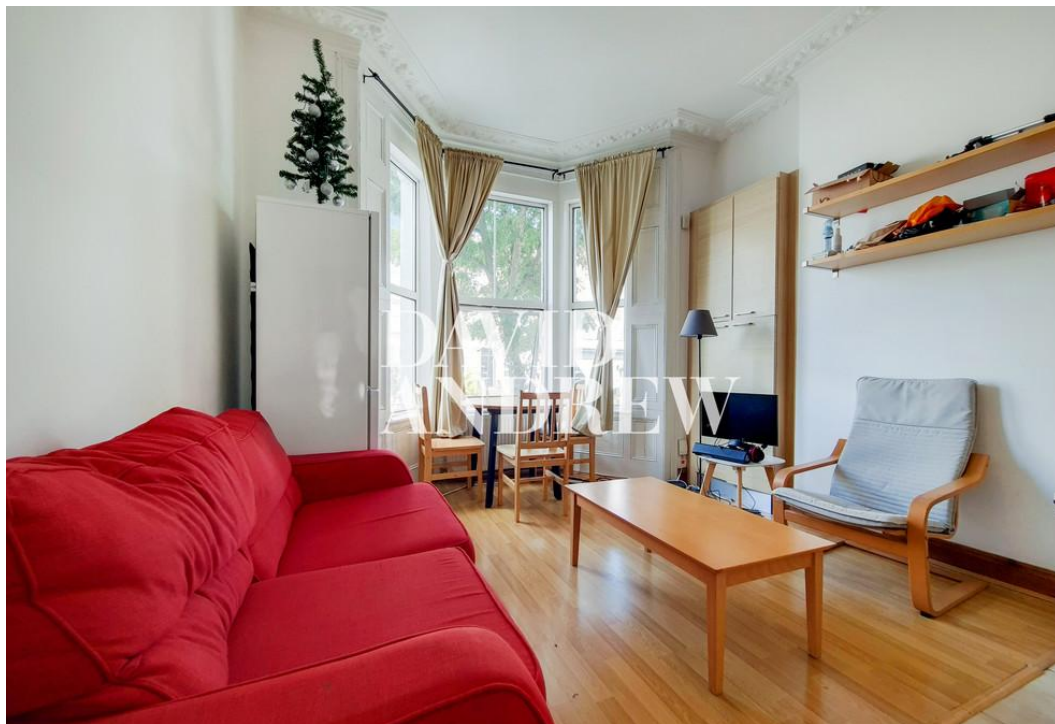
£2,250 pcm

Spacious two bedroom apartment with a private garden set on the raised ground floor of this period conversion moments from Finsbury Park Station.

Property features include two double bedrooms, perfect for sharers or the professional couple, large reception room, separate modern kitchen, modern fully fitted bathroom, wood flooring, double glazed windows throughout, gas central heating and the second bedroom leading down to the private garden.

Located in a prime location, just a short walk from Finsbury Park Station, as well as all the local amenities Stroud Green has to offer. Offered Furnished, Available 25th of August.

- Two Double Bedrooms
- Private Garden
- Open Plan
- Council Tax Band: C
- 496sqft/46sqm
- EPC: C
- Offered Furnished
- Available 25th August





Notes

Archway Office

671 Holloway Road
London, N19 5SE

T (0)20 7619 3750

Highbury Office

90 Highbury Park
London N5 2XE

T (0)20 7354 9111

Stroud Green Office

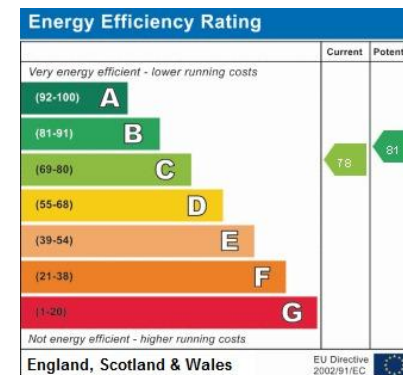
167 Stroud Green Road
London N4 3PZ

T (0)20 7281 2000

General Contact

E info@davidandrew.co.uk

W www.davidandrew.co.uk



Agent's Note:

Whilst Care has been exercised in the preparation of these sales particulars, statements about the property must not be relied upon as representations of statements or fact. Prospective purchasers must make and rely upon their own enquiries and those of professional representatives. The company accept not liability for any error contained in these particulars.

