



Fieldway Crescent, N5 1QD

£3,750 pcm



Fieldway Crescent

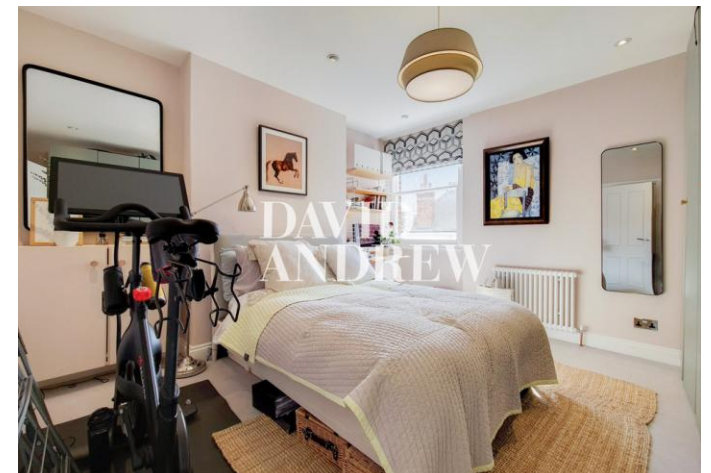
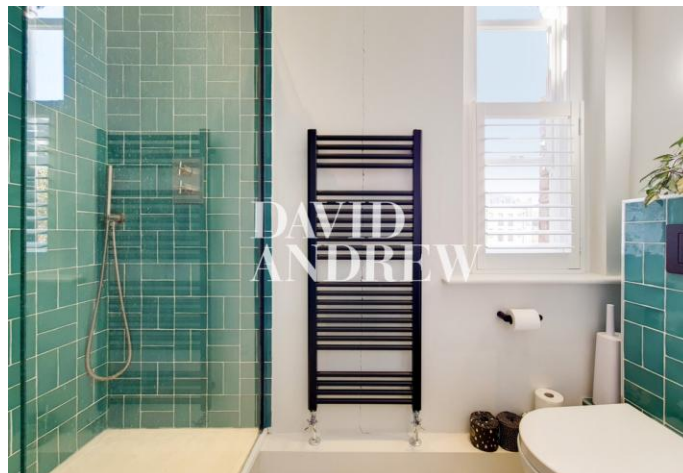
£3,750 pcm

Stylishly presented recently renovated three-bedroom apartment arranged over the second floor in this impressive building located on Fieldway Crescent moments from Highbury Fields. This spacious three-bedroom property offers two large doubles one of which has en-suite facilities and a smaller double currently set up as a nursery. Offering 1019 Sq. ft / 94 Sqm of living space including a spacious separate living room with large bay windows with wooden shutters and wood burner, generous eat-in kitchen with Miele integrated appliances ample workspace perfect for entertaining & large family size bathroom beautifully designed with brick tiling plus both bath and shower facilities and access to a communal garden. Available mid May 2022 on a part furnished basis.

Field way crescent is conveniently located for Highbury Fields, Highbury & Islington Tube & Overground and Upper Street.

- Three bedroom apartment
- Next to Highbury Fields
- Communal garden space
- Two bathroom 1 en-suite
- Excellent transport links
- 1019 Sq. ft / 94 Sqm
- Part furnished
- Available 10th May 2022





Notes

Archway Office

671 Holloway Road
London, N19 5SE

T (0)20 7619 3750

Highbury Office

90 Highbury Park
London N5 2XE

T (0)20 7354 9111

Stroud Green Office

167 Stroud Green Road
London N4 3PZ

T (0)20 7281 2000

General Contact

E info@davidandrew.co.uk

W www.davidandrew.co.uk

Score	Energy rating	Current	Potential
92+	A		
81-91	B		
69-80	C		
55-68	D	62 D	79 C
39-54	E		
21-38	F		
1-20	G		

Agent's Note:

Whilst Care has been exercised in the preparation of these sales particulars, statements about the property must not be relied upon as representations of statements or fact. Prospective purchasers must make and rely upon their own enquiries and those of professional representatives. The company accept not liability for any error contained in these particulars.

