



Elthorne Road, N19 4AS

£500,000  
Leasehold





# Elthorne Road

£500,000

Leasehold

This delightful, purpose-built flat is located on a popular residential street. The property is presented in great condition with an integrated open-plan kitchen / reception, two double bedrooms, a three-piece bathroom and additional W/C. Additional benefits include bike storage, lift access and a secure entrance.

Kinver House is well-situated for access to transport links, including Archway Underground Station (Northern Line, Zone 2), Upper Holloway and Crouch Hill Overground Stations. The flat is within reach of Waterlow Park, Finsbury Park, Highgate and Crouch End's extensive range of amenities with Holloway Road and Tufnell Park a short walk away.

- 686 sqft / 63.7 sqm
- 2 double bedrooms
- Open plan kitchen/living room
- Leasehold
- Lift access
- EPC B
- Bike storage
- Excellent transport links



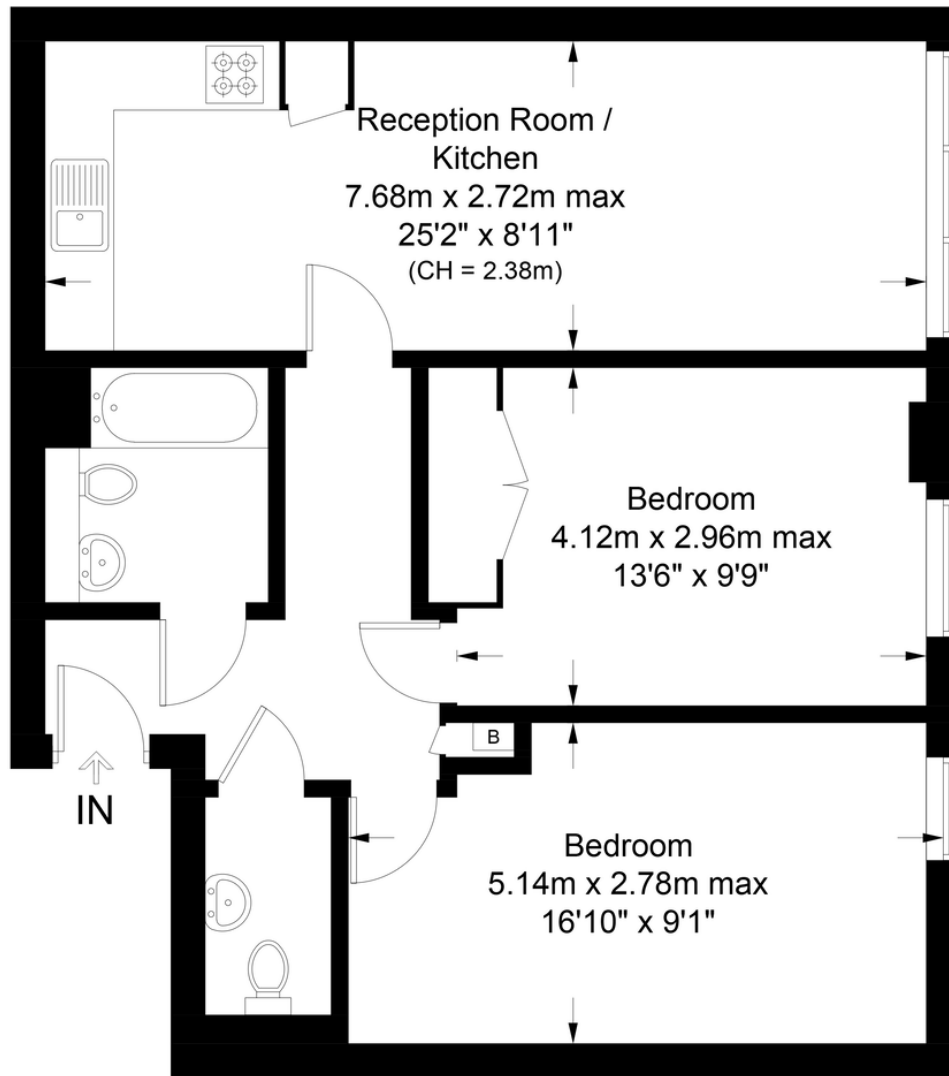






## Kinver House, N19

Approximate Gross Internal Area = 686 sq ft / 63.7 sq m



### Second Floor

**Certified  
Property  
Measurer**

This plan is for layout guidance only. Not drawn to scale unless stated. Windows and door openings are approximate. Whilst every care is taken in the preparation of this plan, please check all dimensions, shapes and compass bearings before making any decisions reliant upon them. (ID1025705)

**DAVID  
ANDREW** | your  
most  
valuable  
asset

# DAVID ANDREW

your  
most  
valuable  
asset

Archway Office

671 Holloway Road  
London, N19 5SE

T (0)20 7619 3750

Highbury Office

90 Highbury Park  
London N5 2XE

T (0)20 7354 9111

Stroud Green Office

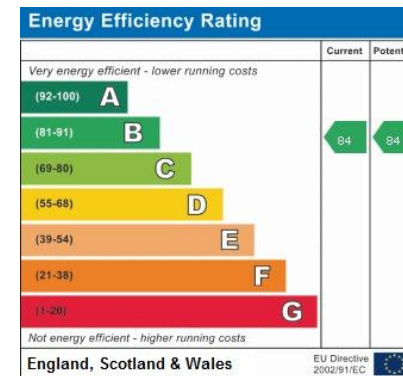
167 Stroud Green Road  
London N4 3PZ

T (0)20 7281 2000

General Contact

E [info@davidandrew.co.uk](mailto:info@davidandrew.co.uk)

W [www.davidandrew.co.uk](http://www.davidandrew.co.uk)



#### Agent's Note:

Whilst Care has been exercised in the preparation of these sales particulars, statements about the property must not be relied upon as representations of statements or fact. Prospective purchasers must make and rely upon their own enquiries and those of professional representatives. The company accept not liability for any error contained in these particulars.

