



Mount Pleasant Crescent, N4 4HR

£2,600 pcm



Mount Pleasant

£2,600 pcm

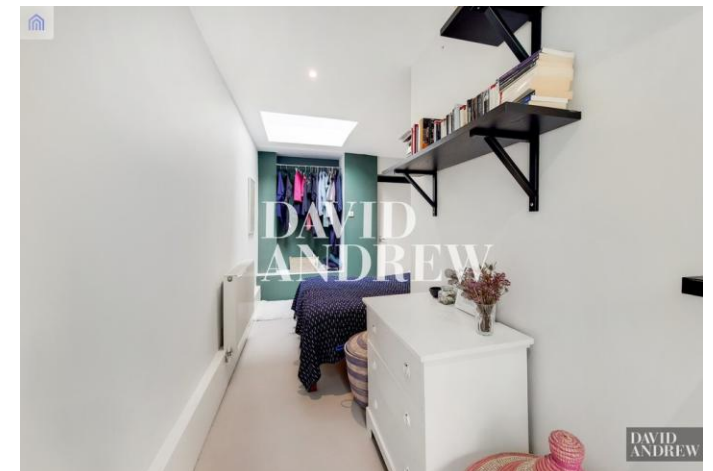
A beautiful two-bedroom apartment with a private garden, perfect for sharers or the professional couple to settle in the heart of Stroud Green less than 10 minutes walk from Finsbury Park Station.

Features include wood flooring throughout, painted feature walls creating a vibrant touch, practical storage space with a utility room/basement, breakfast bar and spacious reception. The hallway takes you into the two spacious, double sized bedrooms both with private access to the private garden - a blank canvas for the next tenant to maintain. Complimented by small practical features including dryer/washer, gas central heating.

Mount Pleasant is surrounded by excellent transport links, Finsbury Park Station only 0.6 miles away – connecting you to the Victoria, Piccadilly & National Rail lines. Offered Furnished, Available 23rd of November.

- Two Double Bedrooms
- Private Garden
- Open Plan Living & Kitchen
- Utility Room/Basement
- 825sqft/77sqm
- EPC Rating: C
- Offered Furnished
- Available 23rd of November





Notes

**DAVID
ANDREW** | your
most
valuable
asset

Archway Office

671 Holloway Road
London, N19 5SE

T (0)20 7619 3750

Highbury Office

90 Highbury Park
London N5 2XE

T (0)20 7354 9111

Stroud Green Office

167 Stroud Green Road
London N4 3PZ

T (0)20 7281 2000

General Contact

E info@davidandrew.co.uk

W www.davidandrew.co.uk

Agent's Note:

Whilst Care has been exercised in the preparation of these sales particulars, statements about the property must not be relied upon as representations of statements or fact. Prospective purchasers must make and rely upon their own enquiries and those of professional representatives. The company accept not liability for any error contained in these particulars.

