



Fairbridge Road, N19 3EP

£1,150,000
Freehold



Fairbridge Road

£1,150,000

Freehold

A substantial, five bedroom, freehold family home comprising of 1681 sqft/159 sqm of living space and a private, rear garden. The house retains a wealth of period charm and character throughout, has great potential and is located on a sought-after residential street. This charming property also offers a cellar, reception room, dining room, toilet, kitchen leading to the private garden, three double bedrooms, a good-sized single bedroom together with a fifth bedroom/office room and family bathroom.

Fairbridge Road is well-situated for access to excellent transport links, including Archway Underground Station (Northern Line, Zone 2), and Upper Holloway Overground Station. The house is within reach of Whitehall Park, Highgate and Crouch End's extensive range of amenities with Junction Road and Tufnell Park a short walk away.

- Grand Victorian terraced house
- Private garden
- Five bedrooms
- Dual-aspect double reception
- Chain free
- Period features
- 1681 sqft / 159 sqm
- 3D video tour available



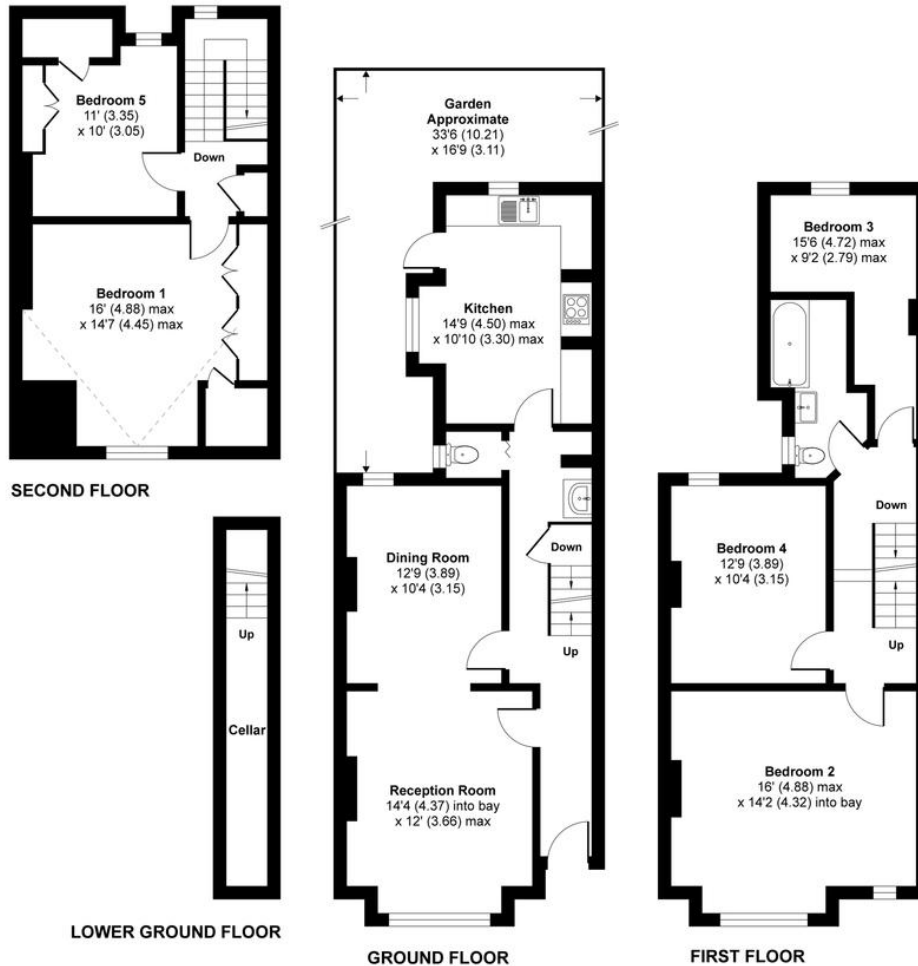


Fairbridge Road, London, N19

Approximate Area = 1577 sq ft / 147 sq m
 Limited Use Area(s) = 104 sq ft / 10 sq m
 Total = 1681 sq ft / 157 sq m
 For identification only - Not to scale



Denotes restricted head height



DAVID ANDREW

your most valuable asset

Archway Office

671 Holloway Road
 London, N19 5SE

T (0)20 7619 3750

Highbury Office

90 Highbury Park
 London N5 2XE

T (0)20 7354 9111

Stroud Green Office

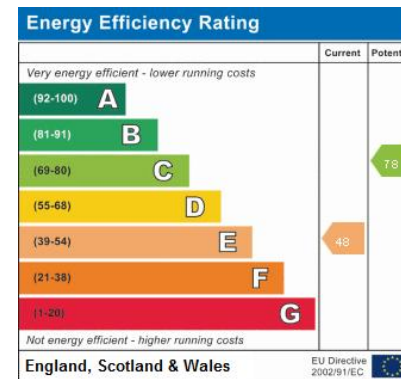
167 Stroud Green Road
 London N4 3PZ

T (0)20 7281 2000

General Contact

E info@davidandrew.co.uk

W www.davidandrew.co.uk



Reference:
 Agent's Note:

Whilst Care has been exercised in the preparation of these sales particulars, statements about the property must not be relied upon as representations of statements or fact. Prospective purchasers must make and rely upon their own enquiries and those of professional representatives. The company accept not liability for any error contained in these particulars.



Floor plan produced in accordance with RICS Property Measurement Standards incorporating International Property Measurement Standards (IPMS2 Residential). © nrichcom 2021. Produced for David Andrew. REF: 789841

