



Mitford Road, N19 4HL

£775,000
Freehold



Mitford Road

£775,000

Freehold

A delightful two-bedroom, cottage-style house presented in excellent condition. This bright and spacious family home comprises two double bedrooms, a modern bathroom and an open-plan kitchen, dining room and living room opening on to a private, courtyard garden. The freehold property also has a south-west facing front garden, good storage and a host of period features. The house offers the possibility to extend in to the attic space (STPP). Viewing is highly recommended.

Located within easy access of Finsbury Park station (Great Northern, Overground, Thameslink, Victoria Line, Piccadilly Line), Upper Holloway (Overground) and Archway station (Northern Line). Mitford Road is also well served by numerous shopping facilities in Stroud Green, Holloway and Crouch End and is within walking distance of Wray Crescent Park.

- 901 sqft / 83.7 sqm
- Two double bedrooms
- Freehold
- Spacious living room
- Open-plan kitchen / dining room
- Modern bathroom
- Private garden
- Possibility to extend (STPP)





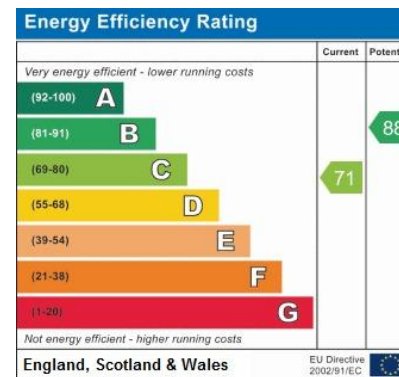
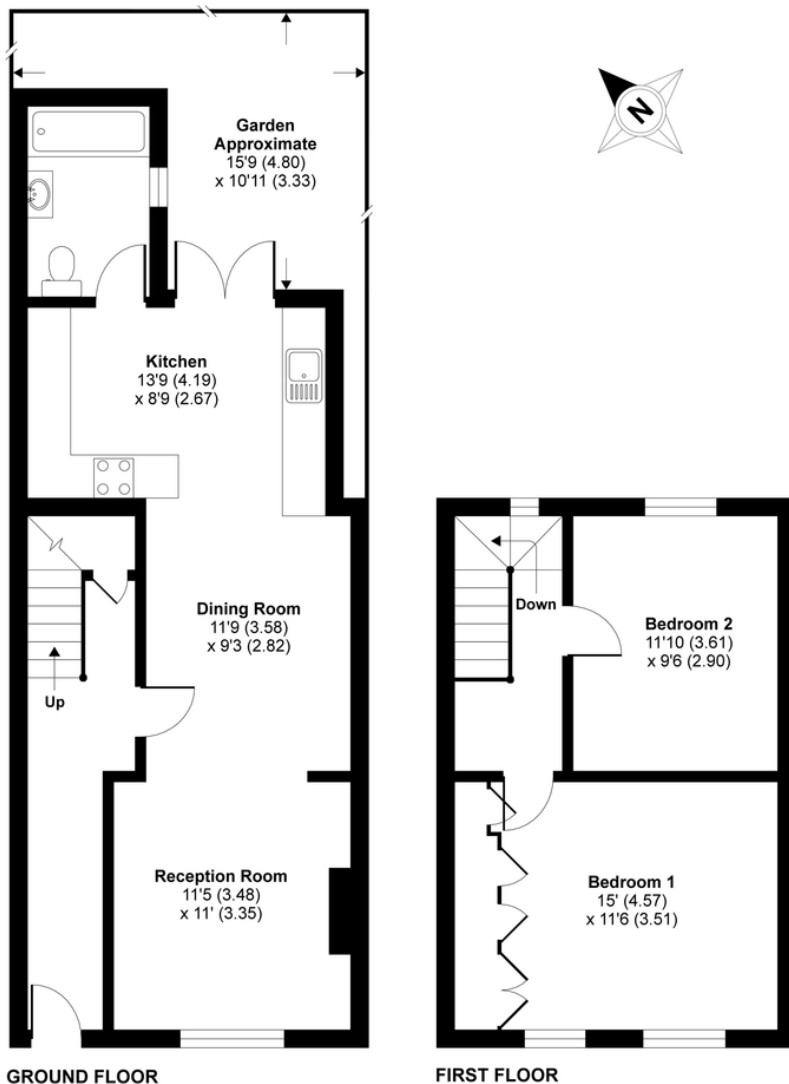
Mitford Road, London, N19

Approximate Area = 901 sq ft / 83.7 sq m

For identification only - Not to scale

DAVID ANDREW

your most valuable asset



Archway Office

671 Holloway Road
London, N19 5SE

T (0)20 7619 3750

Highbury Office

90 Highbury Park
London N5 2XE

T (0)20 7354 9111

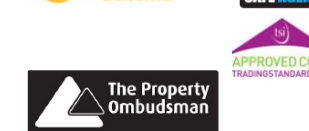
Stroud Green Office

167 Stroud Green Road
London N4 3PZ

T (0)20 7281 2000

General Contact

E info@davidandrew.co.uk



Agent's Note:

Whilst Care has been exercised in the preparation of these sales particulars, statements about the property must not be relied upon as representations of statements or fact. Prospective purchasers must make and rely upon their own enquiries and those of professional representatives. The company accept not liability for any error contained in these particulars.



Floor plan produced in accordance with RICS Property Measurement Standards incorporating International Property Measurement Standards (IPMS2 Residential). © nichecom 2021. Produced for David Andrew. REF: 779853

