



Hanley Road, N4 3DQ

£1,750 pcm

Hanley Road

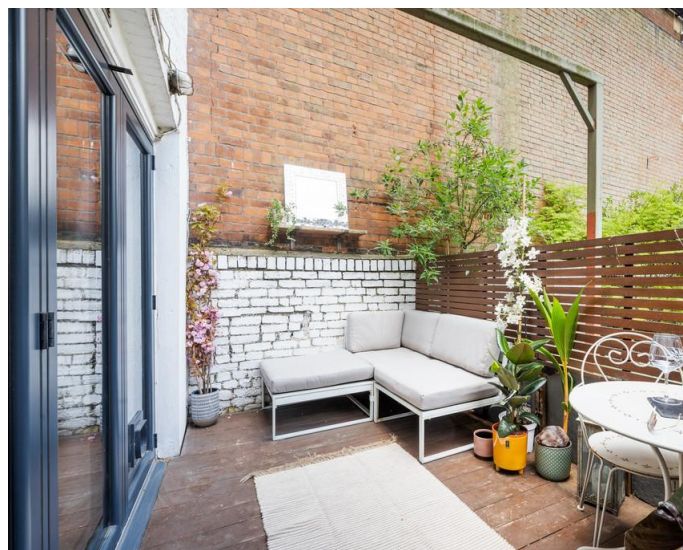
£1,750 pcm

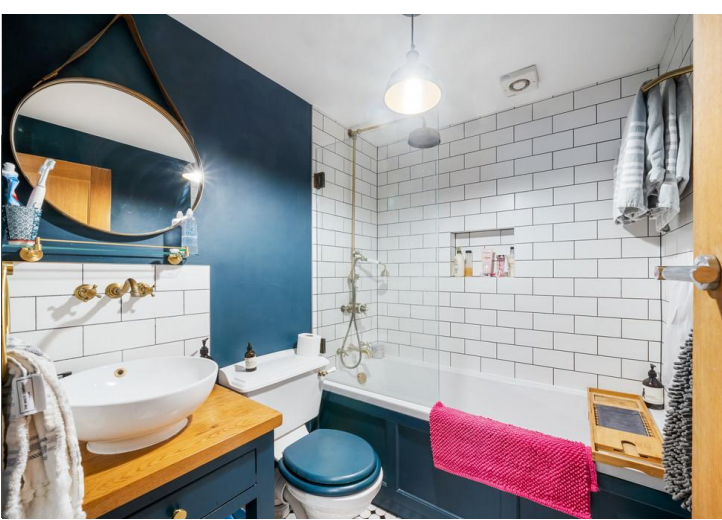
Presenting a beautiful one-bedroom flat in excellent condition located 0.6 miles from Finsbury Park station.

This stunning Victorian home effortlessly blends period charm with modern living. Features include a spacious double bedroom, newly-refurbished bathroom, beautifully decorated open-plan reception with a modern kitchen and a private patio.

Hanley road is located in the heart Stroud Green N4 (Victoria & Piccadilly lines) allowing convenient access to the City & West End. Available mid-May on a fully furnished basis.

- One bedroom apartment
- Private patio
- Wooden floor
- Period features
- Furnished
- Available Mid June
- Pets considered on application
- EPC: C

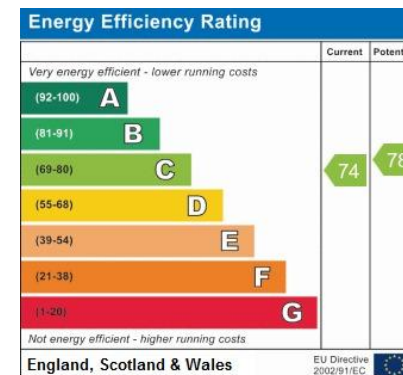




This image shows a blank sheet of white paper with horizontal ruling lines. The lines are evenly spaced and run across the width of the page. There are no margins, text, or other markings on the paper.



W www.davidandrew.co.uk



Whilst Care has been exercised in the preparation of these sales particulars, statements about the property must not be relied upon as representations of statements or fact. Prospective purchasers must make and rely upon their own enquiries and those of professional representatives. The company accept not liability for any error contained in these particulars.

