



Crouch Hill, N4 4AP

£1,750 pcm



Crouch Hill

£1,750 pcm

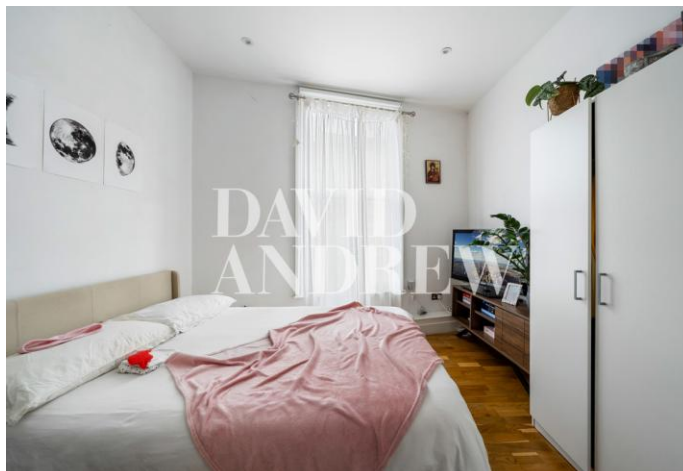
Presenting a light and airy one-bedroom conversion with a spacious roof terrace. This property is located in the highly sought after Stroud Green area, just a minute's walk away from Crouch Hill Overground station, and within 15 minutes walk from Finsbury Park Station.

Features include a spacious open plan reception, fully fitted modern kitchen, a private roof terrace, double bedroom (wardrobe to remain), a stylish modern three-piece bathroom, wood flooring, ample storage and gas central heating.

Just 0.7 miles from Finsbury Park station, and a short walk from an array of local bars, restaurants and eateries. This property offers a combination of commutability, and atmosphere. Offered Unfurnished, Available 19th of August 2023.

- One Bedroom
- Private Roof Terrace
- Open Plan Kitchen/Lounge
- Wood Flooring
- 435 sq ft / 40 sq m
- EPC Rating: C
- Offered Unfurnished
- Available 19th of August





Notes

**DAVID
ANDREW** | your
most
valuable
asset

Archway Office

671 Holloway Road
London, N19 5SE

T (0)20 7619 3750

Highbury Office

90 Highbury Park
London N5 2XE

T (0)20 7354 9111

Stroud Green Office

167 Stroud Green Road
London N4 3PZ

T (0)20 7281 2000

General Contact

E info@davidandrew.co.uk

W www.davidandrew.co.uk

Score	Energy rating	Current	Potential
92+	A		
81-91	B		
69-80	C	71 C	72 C
55-68	D		
39-54	E		
21-38	F		
1-20	G		

Agent's Note:

Whilst Care has been exercised in the preparation of these sales particulars, statements about the property must not be relied upon as representations of statements or fact. Prospective purchasers must make and rely upon their own enquiries and those of professional representatives. The company accept not liability for any error contained in these particulars.

