



Grenville Road, N19 4EH

Guide Price Of £500,000
Share of Freehold



Grenville Road N19

Guide Price Of £500,000

Share of Freehold

Presented to the market in great condition, a lovely 2 bedroom garden flat within a period conversion located in a quiet residential road close to all amenities Stroud Green has on offer.

Arranged over 707 SQ FT/ 65.7 SQ M of internal living space, the property offers an abundance of period features including a traditional fireplace and beautiful crown mouldings. Off the hallway, you'll find a three-piece bathroom suite and an additional separate WC, a good-sized double bedroom flooded with beautiful natural light through large bay window. At the rear a spacious living room leading into a separate stylish kitchen with access to the large, green south-east facing garden. Off the living room, the second bedroom, providing further access to the garden.

This wonderful property is located between Finsbury Park and Crouch End and allows convenient access to the Victoria and Piccadilly lines, Crouch Hill overground and numerous bus routes are all within easy reach.

- Two bedroom flat
- Large private garden
- Share of Freehold
- Modern bathroom suite
- Additional separate WC
- Spacious living room
- Modern kitchen
- 707 SQ FT - 65.7 SQ M

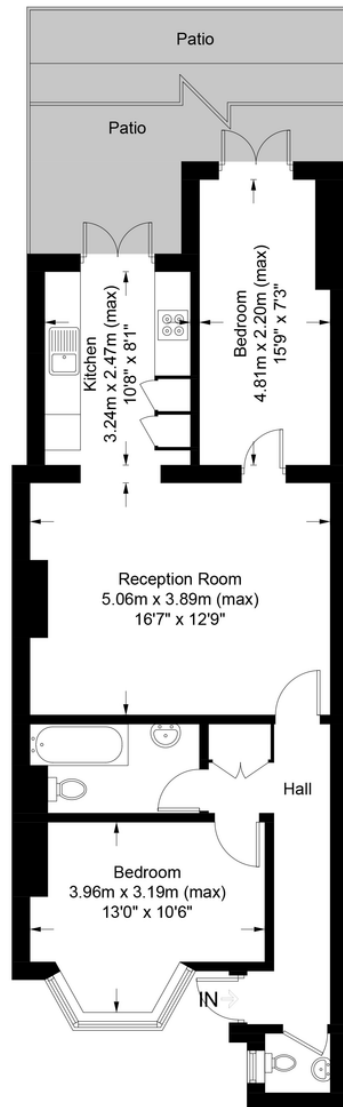






Grenville Road, N19

Approximate Gross Internal Area = 707 sq ft / 65.7 sq m



Lower Ground Floor

This plan is for layout guidance only. Not drawn to scale unless stated. Windows and door openings are approximate. Whilst every care is taken in the preparation of this plan, please check all dimensions, shapes and compass bearings before making any decisions reliant upon them. (ID705849)



DAVID ANDREW

your most valuable asset

Archway Office

671 Holloway Road
London, N19 5SE

T (0)20 7619 3750

Highbury Office

90 Highbury Park
London N5 2XE

T (0)20 7354 9111

Stroud Green Office

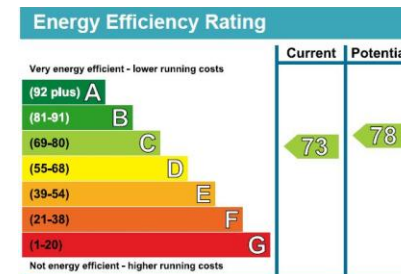
167 Stroud Green Road
London N4 3PZ

T (0)20 7281 2000

General Contact

E info@davidandrew.co.uk

W www.davidandrew.co.uk



Agent's Note:

Whilst Care has been exercised in the preparation of these sales particulars, statements about the property must not be relied upon as representations of statements or fact. Prospective purchasers must make and rely upon their own enquiries and those of professional representatives. The company accept not liability for any error contained in these particulars.

