



Andover Road, N7 7RA

Asking Price Of £450,000
Leasehold



Andover Road N7

Asking Price Of £450,000

Leasehold

Arranged over the second and third floors a three bedroom maisonette with the advantage of a large private roof terrace in the ever more popular Finsbury Park N4.

Comprising 1061 SQ FT / 94.4 SQ M of living accommodation arranged over the second and third floors. Features include a 17' separate reception space with sliding patio doors to a large roof terrace, the reception is directly connected to a generous kitchen diner. Off the hallway, an additional wc and built in storage cupboard. Stairs lead to the upper level, comprising three bedrooms, two large doubles and a third smaller double. There's a family size three piece bathroom suite and again additional built in storage.

Located in a convenient position with an excellent selection of bars, restaurants, and shopping amenities. Transport links include Finsbury Park station (Victoria & Piccadilly Lines) allowing easy access to the City & West End.

- Three bedroom maisonette
- Large private terrace
- Scope to improve
- Large and bright reception room
- Spacious kitchen diner
- Close to Finsbury Park station
- Bathroom and separate WC
- 1016 SQ FT 94.4 SQ M

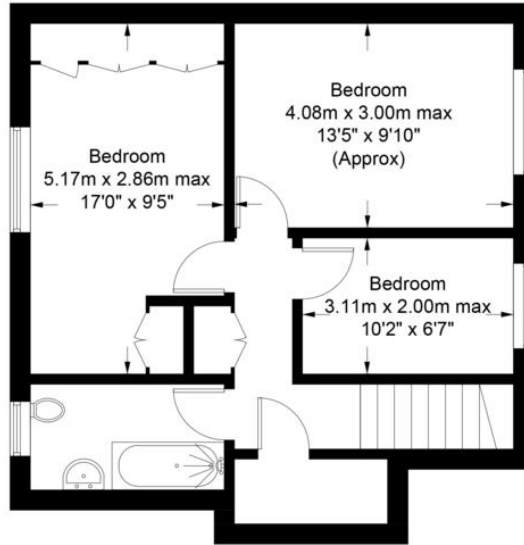




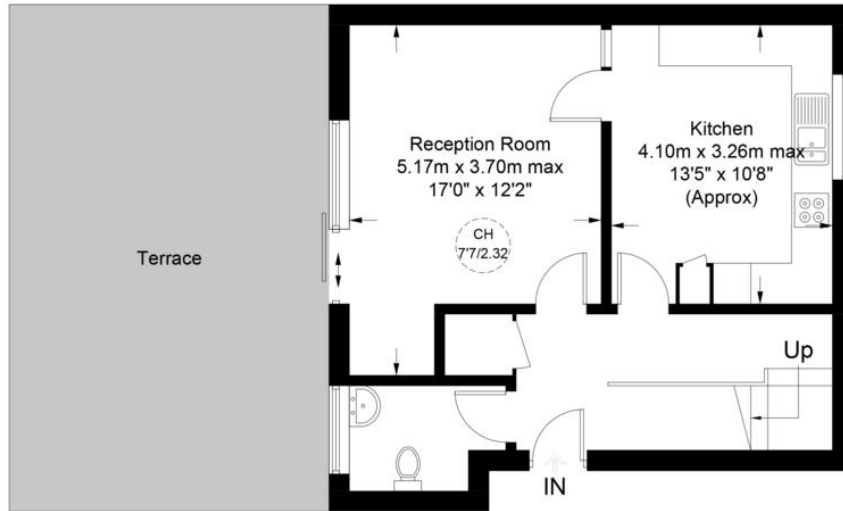


Andover Road, N7

Approximate Gross Internal Area = 1016 sq ft / 94.4 sq m



Third Floor



Second Floor

This plan is for layout guidance only. Not drawn to scale unless stated. Windows and door openings are approximate. Whilst every care is taken in the preparation of this plan, please check all dimensions, shapes and compass bearings before making any decisions reliant upon them. (ID707148)



DAVID ANDREW

your most valuable asset

Archway Office

671 Holloway Road
London, N19 5SE

T (0)20 7619 3750

Highbury Office

90 Highbury Park
London N5 2XE

T (0)20 7354 9111

Stroud Green Office

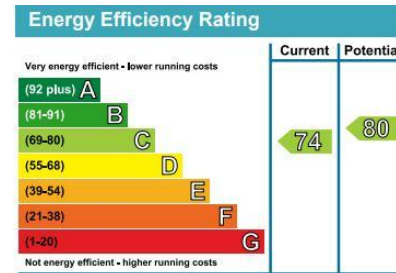
167 Stroud Green Road
London N4 3PZ

T (0)20 7281 2000

General Contact

E info@davidandrew.co.uk

W www.davidandrew.co.uk



Agent's Note:

Whilst Care has been exercised in the preparation of these sales particulars, statements about the property must not be relied upon as representations of statements or fact. Prospective purchasers must make and rely upon their own enquiries and those of professional representatives. The company accept not liability for any error contained in these particulars.

