



Holly Park, N4 4BE

Guide Price Of £425,000  
Leasehold



# Holly Park N4

Guide Price Of £425,000

Leasehold

Spacious two double bedroom ground and first floor maisonette with patio garden and a pleasant green and leafy outlook over communal grounds. Offering sturdy construction over two floors, fully double glazed and further enhanced by stylish light and neutral décor throughout.

The ground floor comprises, large separate reception space with feature fireplace and plenty of room for a dining table. Next door the kitchen has the advantage of space for a large fridge freezer, plumbing is in place for washing machine and dish washer. Off the hallway there is a practical ground floor cloakroom and on the upper floor there are two well-proportioned bedrooms, the larger has bespoke fitted storage. There is also a modern white bathroom suite.

A strong feature of this attractive home is the large double-glazed windows allowing wonderful light.

Occupying a convenient location for easy access to both Finsbury Park and Crouch End.

- Two double bedrooms
- Accommodation over two floors
- Patio garden space
- Pleasant green outlook
- Large reception space
- Separate fitted kitchen
- Light and neutral décor
- 639 sq ft / 59.3 sq m



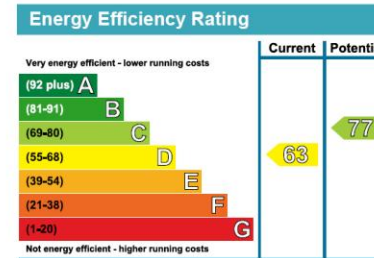
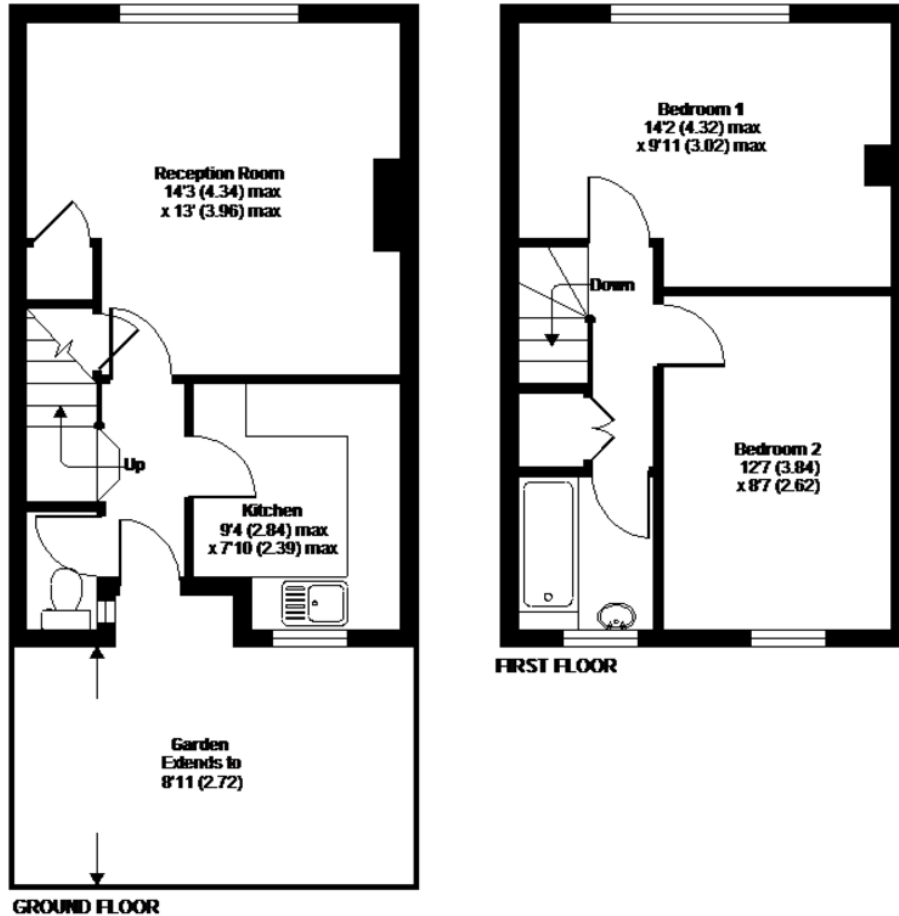


# Holly Park Estate, London, N4

APPROX. GROSS INTERNAL FLOOR AREA 639 SQ FT 59.3 SQ METRES

# DAVID ANDREW

your most valuable asset



Archway Office

671 Holloway Road  
London, N19 5SE

T (0)20 7619 3750

Highbury Office

90 Highbury Park  
London N5 2XE

T (0)20 7354 9111

Stroud Green Office

167 Stroud Green Road  
London N4 3PZ

T (0)20 7281 2000

General Contact

E [info@davidandrew.co.uk](mailto:info@davidandrew.co.uk)

W [www.davidandrew.co.uk](http://www.davidandrew.co.uk)



Whilst every attempt has been made to ensure the accuracy of the floor plan contained here, measurements of doors, windows and rooms are approximate and no responsibility is taken for any error, omission or misstatement. These plans are for representation purposes only as defined by RICS Code of Measuring Practice and should be used as such by any prospective purchaser. Specifically no guarantee is given on the total square footage of the property if quoted on this plan. Any figure given is for initial guidance only and should not be relied on as a basis of valuation.

Copyright nichecom.co.uk 2013 Produced for David Andrew REF : 433979

### Agent's Note:

Whilst Care has been exercised in the preparation of these sales particulars, statements about the property must not be relied upon as representations of statements or fact. Prospective purchasers must make and rely upon their own enquiries and those of professional representatives. The company accept not liability for any error contained in these particulars.

