



Medina Road, N7 7JU

£425,000 Leasehold



A highly desirable, one-bedroom apartment comprising 482sqft / 44sqm on the lower-ground floor of an attractive, mid-terrace period house with private entrance. This fantastic property offers well-planned accommodation, a modern kitchen and bathroom and a spacious living/dining room that opens onto a private, walled garden. Having been redecorated throughout in natural tones, this one is surely going to impress.

Medina Road is situated on a quiet, tree-lined residential street offering excellent access to Finsbury Park station (National Rail Victoria Line &

- 482 SQFT / 44 SQM
- Near Finsbury Park
- Modernised Throughout
- Chain Free
- Private, Walled Garden
- 103 Year Lease
- Tiled Bathroom
- Quiet Location

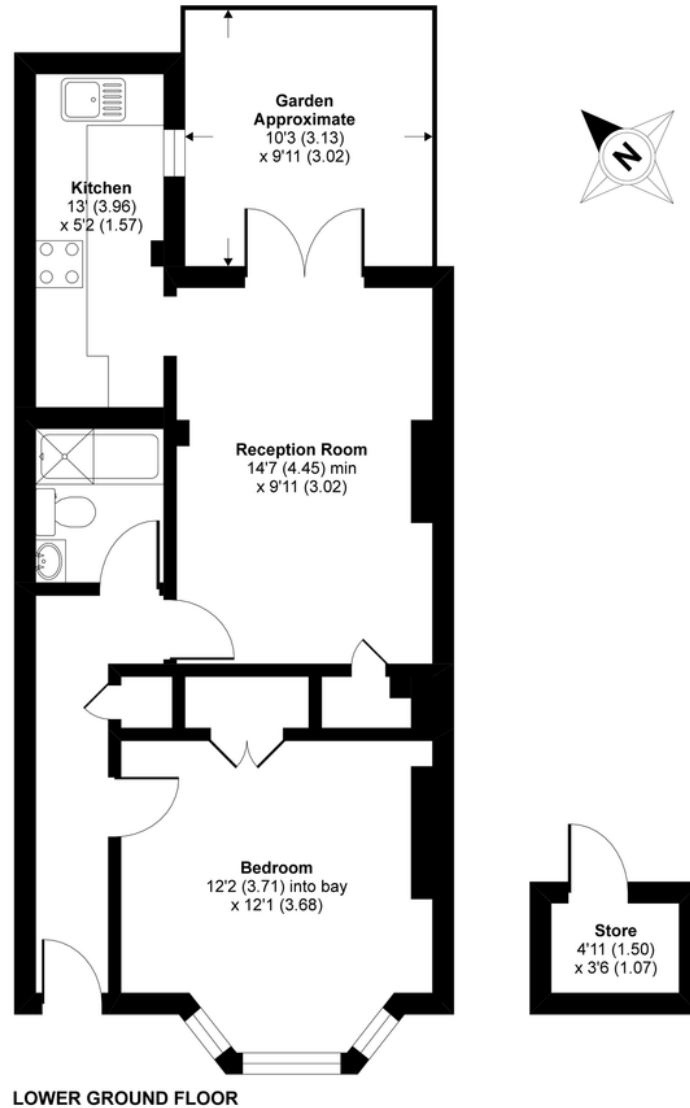
Medina Road, London, N7

Approximate Area = 482 sq ft / 44.8 sq m

Outbuilding = 17 sq ft / 1.6 sq m

Total = 499 sq ft / 46.4 sq m

For identification only - Not to scale



LOWER GROUND FLOOR



Floor plan produced in accordance with RICS Property Measurement Standards incorporating International Property Measurement Standards (IPMS2 Residential). © nichecom 2020. Produced for David Andrew. REF: 614620



Agent's Note:

Whilst Care has been exercised in the preparation of these particulars, statements about the property must not be relied upon as representations of statement or fact. Prospective applicants must make and rely upon their own enquiries and those of their professional representatives. The company accepts no liability for any error contained in these particulars.

Archway office

671 Holloway Road
London, N19 5SE

T (0)20 7619 3750
E archway@davidandrew.co.uk

Highbury office

90 Highbury Park
London, N5 2XE

T (0)20 7354 9111
E highbury@davidandrew.co.uk

Stroud Green office

167 Stroud Green Road
London, N4 3PZ

T (0)20 7281 2000
E stroudgreen@davidandrew.co.uk