



Green Lanes Walk, N4 2GE

£3,250 pcm

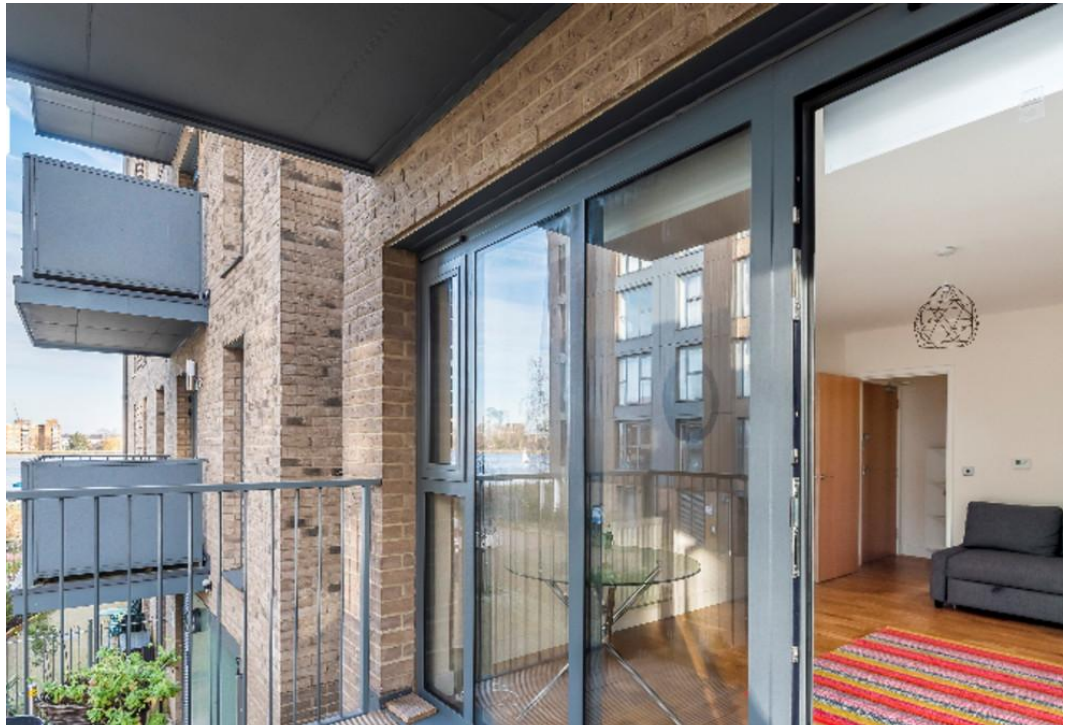


Green Lanes Walk

£3,250 pcm

Ideally situated in a sought after development positioned next to the Woodberry Down reservoir, is this elegant three bedroom apartment with internal accommodation of 825sqft/76.6sqm. Located on the first floor and served by an elevator, the apartment is presented in immaculate condition with a private balcony, which enjoys great views over the Woodberry Wetlands. There are three good-sized bedrooms, two bathrooms with both serving as en-suite, 15ft reception room and secure bicycle storage. The property is enviably located for access to the open spaces of Finsbury Park & Clissold Park, the indoor climbing centre on Green Lanes, with the sailing club at the reservoir and the Woodberry Wetlands nature & wildlife reserve. The transport hubs of Manor House (Piccadilly Line) is within a 3 minute walk of the property and Finsbury Park (Piccadilly, Victoria, National Rail) is circa ten minutes walk, with the 141 & 341 buses stopping outside the development.

- Three bedroom apartment
- Two bathrooms
- Modern development
- Views of the reservoir
- 825 Sq ft / 76.6 Sq meters
- Energy efficient
- Part furnished
- Available 11th August 2023





Notes



Archway Office

671 Holloway Road
London, N19 5SE

T (0)20 7619 3750

Highbury Office

90 Highbury Park
London N5 2XE

T (0)20 7354 9111

Stroud Green Office

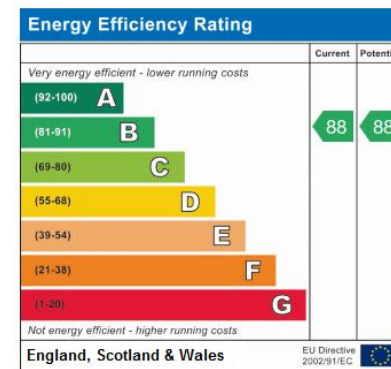
167 Stroud Green Road
London N4 3PZ

T (0)20 7281 2000

General Contact

E info@davidandrew.co.uk

W www.davidandrew.co.uk



Agent's Note:
Whilst Care has been exercised in the preparation of these sales particulars, statements about the property must not be relied upon as representations of statements or fact. Prospective purchasers must make and rely upon their own enquiries and those of professional representatives. The company accept not liability for any error contained in these particulars.

