



**DAVID  
ANDREW**

your  
most  
valuable  
asset

Pooles Park, N4 3FD

Asking Price Of £550,000  
Leasehold



# Pooles Park N4

Asking Price Of £550,000

Leasehold

Stylish 2 bedroom, 2 bathroom apartment with private balcony arranged over the first floor .

Presented to the market in exceptional condition, offering approx. 707 SQ FT/ 66 SQ M of versatile internal living space. A spacious hallway greets you, leading into a generous open-plan kitchen/ living room with stunning dual aspect windows and access to a lovely west-facing balcony. Off the hallway the south-east facing main bedroom with built-in wardrobes and a modern en-suite shower, a second bedroom which also easily accommodates a double bed, separating the two bedrooms a large family size modern bathroom suite.

Located in an enviable position, perfectly placed for ease of access to Finsbury Park Station (Piccadilly and Victoria Lines) and the eagerly awaited City North Towers, this wonderful home also offers access to landscaped communal gardens and secure bike storage.

Internal viewings are highly recommended!

- Stylish modern home
- Two double bedrooms
- Two bathrooms
- Stunning dual aspect reception
- West-facing balcony
- Excellent transport connection
- Communal garden and bike storage
- 707 SQ FT - 65.7 SQ M

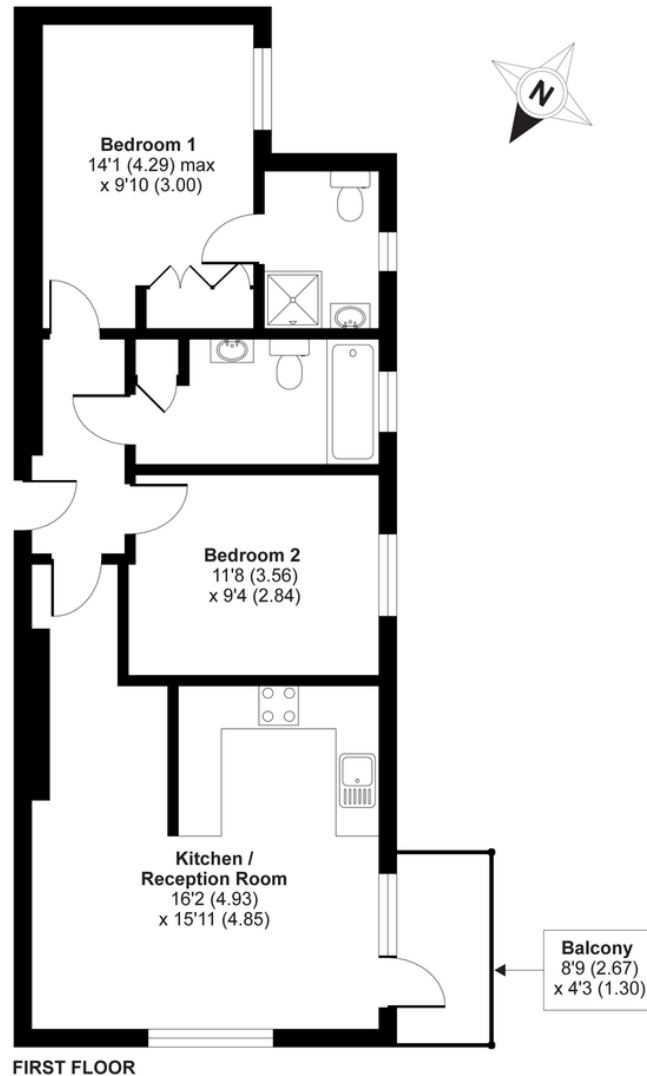






## Rosefield, Pooles Park, London, N4

APPROX. GROSS INTERNAL FLOOR AREA 707 SQ FT 65.7 SQ METRES



Whilst every attempt has been made to ensure the accuracy of the floor plan contained here, measurements of doors, windows and rooms are approximate and no responsibility is taken for any error, omission or misstatement. These plans are for representation purposes only as defined by RICS Code of Measuring Practice and should be used as such by any prospective purchaser. Specifically no guarantee is given on the total square footage of the property if quoted on this plan. Any figure given is for initial guidance only and should not be relied on as a basis of valuation.

Copyright nichecom.co.uk 2020 Produced for David Andrew REF : 586347

# DAVID ANDREW

your most valuable asset

### Archway Office

671 Holloway Road  
London, N19 5SE

T (0)20 7619 3750

### Highbury Office

90 Highbury Park  
London N5 2XE

T (0)20 7354 9111

### Stroud Green Office

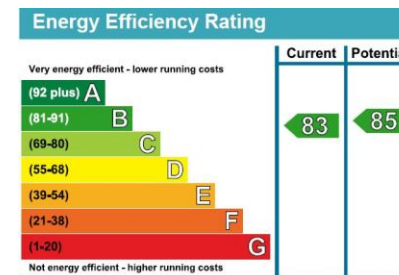
167 Stroud Green Road  
London N4 3PZ

T (0)20 7281 2000

### General Contact

E [info@davidandrew.co.uk](mailto:info@davidandrew.co.uk)

W [www.davidandrew.co.uk](http://www.davidandrew.co.uk)



### Agent's Note:

Whilst Care has been exercised in the preparation of these sales particulars, statements about the property must not be relied upon as representations of statements or fact. Prospective purchasers must make and rely upon their own enquiries and those of professional representatives. The company accept not liability for any error contained in these particulars.

