



Lochbie Mansions, N4 4SB

Guide Price £550,000  
Leasehold



# Lochlie Mansions N4

Guide Price £550,000

Leasehold

Located in an imposing Victorian mansion block, a spacious two-bedroom apartment with stunning views across London's skyline, equidistant between popular Stroud Green N4 and Crouch End N8.

Arranged over the first floor and offering an impressive 878 SQ FT/ 81.6 SQ M of internal living space, features include an extremely spacious hall way with beautiful wooden flooring, coving to ceiling, large sash window at one end and a practical storage cupboard. There's a charming separate reception room with two beautiful sash windows allowing copious amounts of natural light, a cast-iron fireplace feature and coving to ceiling. Across the hall way, a wonderfully light kitchen/diner with an abundance of wall and base units and plenty of room for a dining table with a lovely large southerly-facing double sash window overlooking the neighbouring gardens. Next door, a white three-piece bathroom suite with fitted shower, built-in storage, and a frosted sash window. Lastly, two very well-proportioned bedrooms with further built-in storage, again with an amazing amount of natural light through sash windows. The bedrooms are located at opposing ends, ensuring great privacy particularly if renting a second room. The property further benefits from access to well-maintained communal gardens and the option to rent a resident's parking space.

The property is currently undergoing a lease extension and will be offered with a new approx. 180-year lease.

Situated on Crouch Hill N4, close to excellent transport links at Finsbury Park station (Piccadilly & Victoria lines, National Rail), Crouch Hill Overground and a growing selection of local coffee shops, bars, and eateries at both Stroud Green & Crouch End. The green and open spaces at Finsbury Park the Parkland Walk and Wray Crescent are also close by.

Internal viewings are a must to fully appreciate the generous proportions and abundance of period charm on offer!

- 878 SQ FT/ 81.6 SQ M
- Chain Free Sale
- Victorian Mansion block
- Generous proportions throughout
- Green and leafy location
- Abundance of charm and character
- Glorious sash windows
- Large kitchen and separate reception

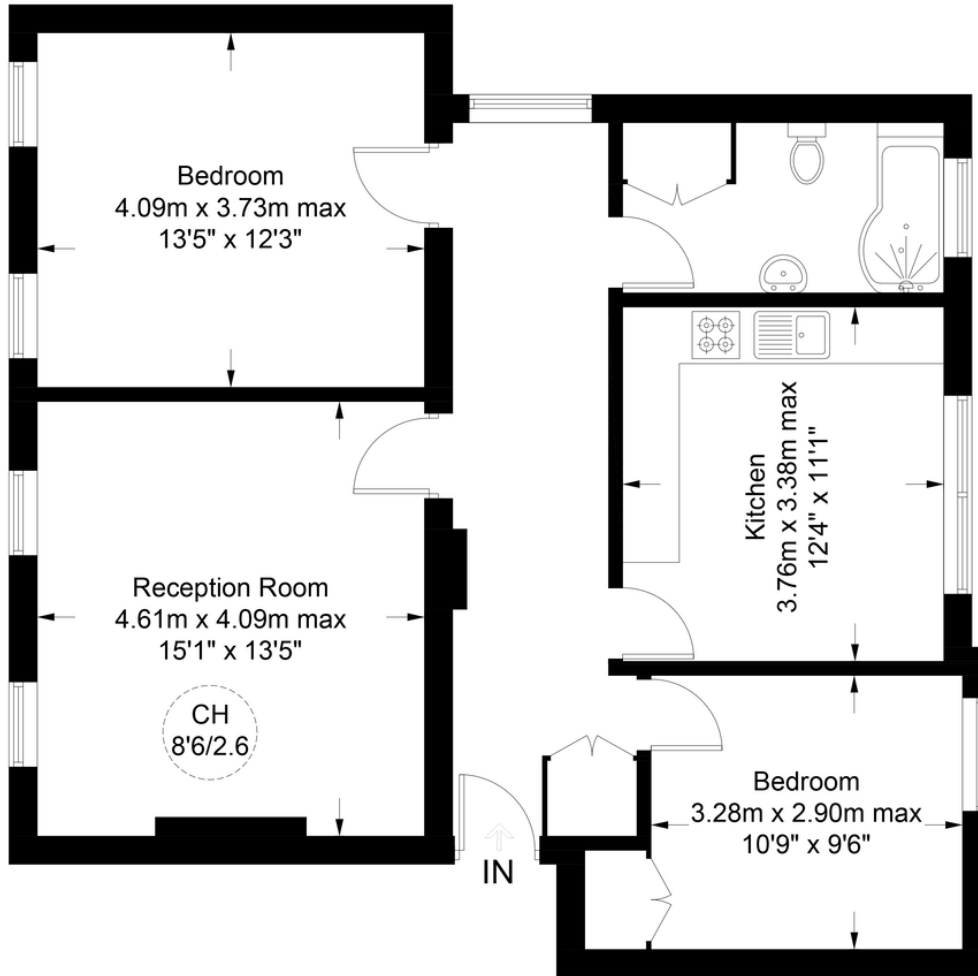






# Lochbie Mansions, N4

Approximate Gross Internal Area = 878 sq ft / 81.6 sq m



## First Floor

This plan is for layout guidance only. Not drawn to scale unless stated. Windows and door openings are approximate. Whilst every care is taken in the preparation of this plan, please check all dimensions, shapes and compass bearings before making any decisions reliant upon them. (ID852807)



**Certified Property Measurer**



Score	Energy rating	Current	Potential
92+	A		
81-91	B		82   B
69-80	C	70   C	
55-68	D		
39-54	E		
21-38	F		
1-20	G		

### Agent's Note:

Whilst Care has been exercised in the preparation of these sales particulars, statements about the property must not be relied upon as representations of statements or fact. Prospective purchasers must make and rely upon their own enquiries and those of professional representatives. The company accept not liability for any error contained in these particulars.

### Archway Office

671 Holloway Road  
London, N19 5SE

T (0)20 7619 3750

### Highbury Office

90 Highbury Park  
London N5 2XE

T (0)20 7354 9111

### Stroud Green Office

167 Stroud Green Road  
London N4 3PZ

T (0)20 7281 2000

### General Contact

E [info@davidandrew.co.uk](mailto:info@davidandrew.co.uk)

W [www.davidandrew.co.uk](http://www.davidandrew.co.uk)

