



Newnton Close, N4 2GX

£3,500 pcm



Newnton Close

£3,500 pcm

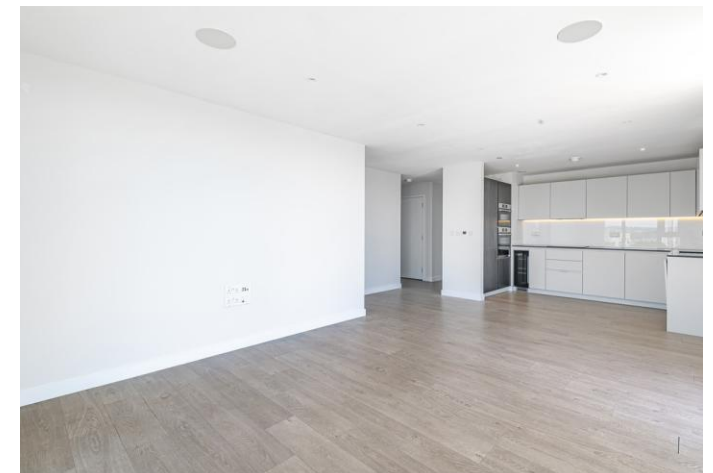
A stunning brand new sub-penthouse consisting of three double bedrooms, two bathrooms and a private spacious terrace over looking the nature reservoir and amazing views over the city. Rental Includes Secure Parking.

Property features include three double bedrooms, two modern bathrooms, master bedroom with en suite shower and built in wardrobes. Further features include a spectacular open plan living arrangement with views over the city, a bright and spacious reception with a large private terrace again over looking the beautiful nature reservoir & amazing views over the city. A fully fitted modern designer kitchen, ample storage off the hallway, built in wardrobes, wood flooring through out, carpets in the bedroom, built in surround sound systems, access to on site Gym/Pool and a 24hr Concierge.

Sandpiper Apartments is ideally located for Manor House, Finsbury Park & Stamford Hill Stations for easy access into central London. unfurnished , Available mid October 2022

- Three Bedrooms
- Two Bathrooms
- Spacious Private Terrace
- Views over the City & Nature Reservoir
- Secure Underground Parking & Bike Storage
- 24hr Concierge
- Access to on site Gym & Pool
- Available mid October 2022





Notes

DAVID ANDREW

your most valuable asset

Archway Office

671 Holloway Road
London, N19 5SE

T (0)20 7619 3750

Highbury Office

90 Highbury Park
London N5 2XE

T (0)20 7354 9111

Stroud Green Office

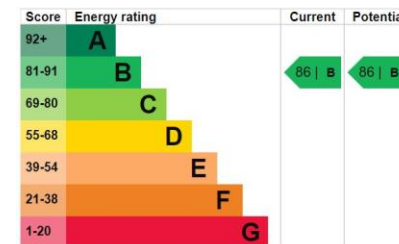
167 Stroud Green Road
London N4 3PZ

T (0)20 7281 2000

General Contact

E info@davidandrew.co.uk

W www.davidandrew.co.uk



Agent's Note:

Whilst Care has been exercised in the preparation of these sales particulars, statements about the property must not be relied upon as representations of statements of fact. Prospective purchasers must make and rely upon their own enquiries and those of professional representatives. The company accept not liability for any error contained in these particulars.

