



Trinder Road, N19 4QS

Asking Price Of £595,000
Share of Freehold



Trinder Road N19

Asking Price Of £595,000

Share of Freehold

Gloriously light and spacious two double bedroom converted apartment arranged over three different levels, affording 903 SQ FT 83.3 SQM of attractive and versatile living space.

Presented in excellent decorative order, features include a separate reception with arch sash windows, stripped wooden floorboards and a period fireplace. At the rear a pleasant kitchen breakfast room with exposed brick chimney breast and a range of white base units. The well-proportioned bedrooms are on two different levels with the advantage of a bathroom suite and additional shower room in close proximity. The top floor landing also adds a flexible space currently in use as a study area.

Trinder Road is a quiet residential turning amidst principally Victorian family homes, equidistant between Crouch End and Stroud Green Road providing a wonderful selection of local bars, restaurants and shopping amenities. Finsbury Park and Crouch Hill stations provide the nearest transport links allowing convenient access to the City & West End.

Offered with a share of the freehold internal viewing is highly recommended.

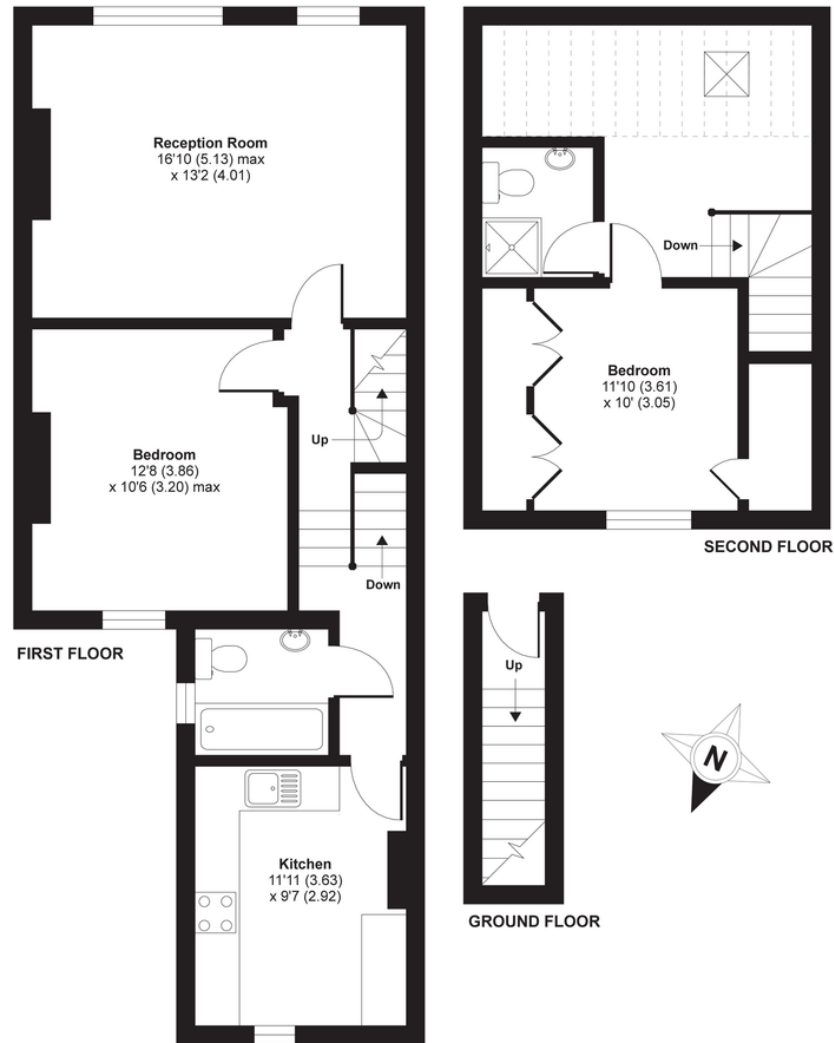
- Attractive period home
- Quiet yet convenient location
- Two generous double bedrooms
- Excellent built in storage
- Retaining much period charm
- Wonderfully light and airy
- Arranged over three levels
- 903 SQ FT 83.8 SQM





Trinder Road, London, N19

APPROX. GROSS INTERNAL FLOOR AREA 903 SQ FT 83.8 SQ METRES (EXCLUDES RESTRICTED HEAD HEIGHT)



Whilst every attempt has been made to ensure the accuracy of the floor plan contained here, measurements of doors, windows and rooms are approximate and no responsibility is taken for any error, omission or misstatement. These plans are for representation purposes only as defined by RICS Code of Measuring Practice and should be used as such by any prospective purchaser. Specifically no guarantee is given on the total square footage of the property if quoted on this plan. Any figure given is for initial guidance only and should not be relied on as a basis of valuation.

Copyright nichecom.co.uk 2019 Produced for David Andrew REF : 423801

DAVID ANDREW

your most valuable asset

Archway Office

671 Holloway Road
London, N19 5SE

T (0)20 7619 3750

Highbury Office

90 Highbury Park
London N5 2XE

T (0)20 7354 9111

Stroud Green Office

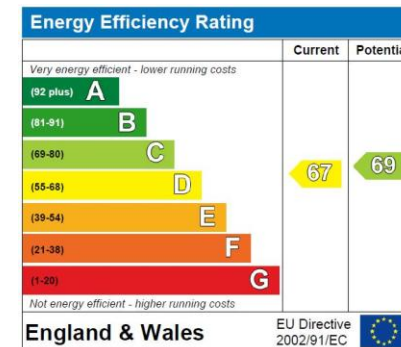
167 Stroud Green Road
London N4 3PZ

T (0)20 7281 2000

General Contact

E info@davidandrew.co.uk

W www.davidandrew.co.uk



Agent's Note:

Whilst Care has been exercised in the preparation of these sales particulars, statements about the property must not be relied upon as representations of statements or fact. Prospective purchasers must make and rely upon their own enquiries and those of professional representatives. The company accept not liability for any error contained in these particulars.

