



Wilberforce Road, N4 2SP

£575 pw



Willerforce Road

£575 pw

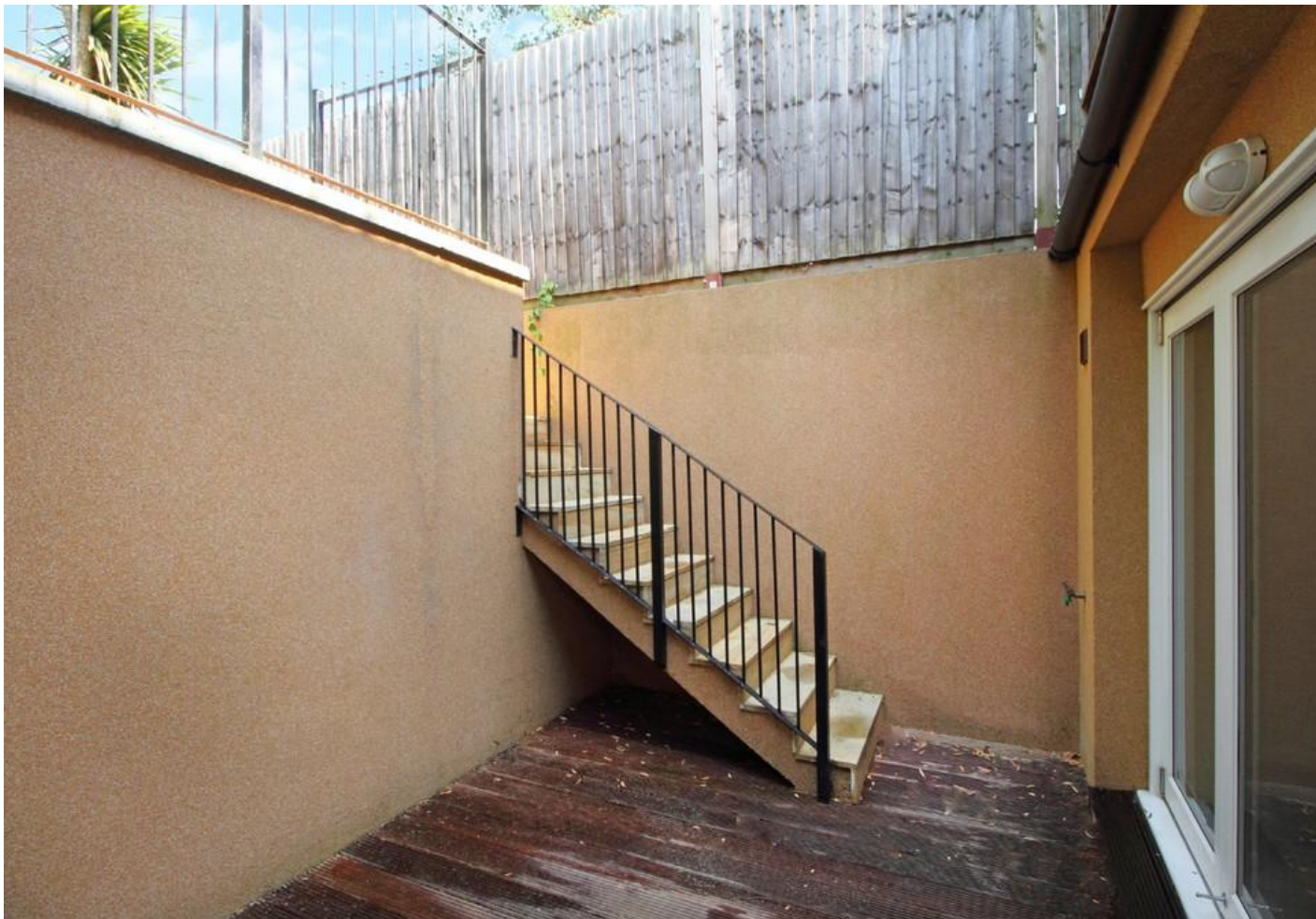
Stunning three bedroom, two bathroom apartment set within a period conversion with a private garden moments from Finsbury Park & Arsenal Stations.

The property is beautifully presented with three good sized double bedrooms, master bedroom with an en-suite fully fitted modern bathroom, fully fitted family bathroom with underfloor heating, large open plan reception with a fully fitted modern Kitchen/diner, reception doors leading to a private courtyard which also leads to beautifully well maintained private garden. Further benefits include a separate utility room, double glazed windows, gas central heating and ample storage through out the apartment.

Offering an excellent location, with Clissold Park on your doorstep, Finsbury Park and Arsenal Stations is around 10 minutes walk away. Highbury Barn and all of the local amenities Finsbury Park has to offer is within 10 to 15 minutes walk from the apartment. Available Now Part Furnished.

- Three Bedrooms
- Two Bathrooms
- Private Garden
- 1172sqft/108.8sqm
- Private Entrance
- Close to Good Transport Links
- Offered Part Furnished
- Available now





Notes

Archway Office

671 Holloway Road
London, N19 5SE

T (0)20 7619 3750

Highbury Office

90 Highbury Park
London N5 2XE

T (0)20 7354 9111

Stroud Green Office

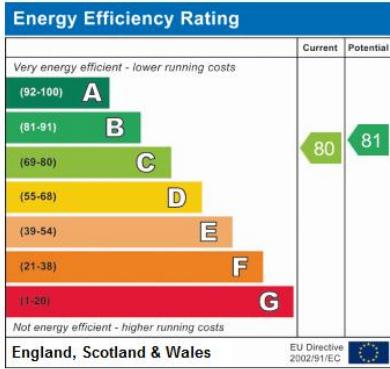
167 Stroud Green Road
London N4 3PZ

T (0)20 7281 2000

General Contact

E info@davidandrew.co.uk

W www.davidandrew.co.uk



Agent's Note:
Whilst Care has been exercised in the preparation of these sales particulars, statements about the property must not be relied upon as representations of statements or fact. Prospective purchasers must make and rely upon their own enquiries and those of professional representatives. The company accept not liability for any error contained in these particulars.

