



Landseer Road, N19 4JU

Guide Price £585,000

Landseer Road

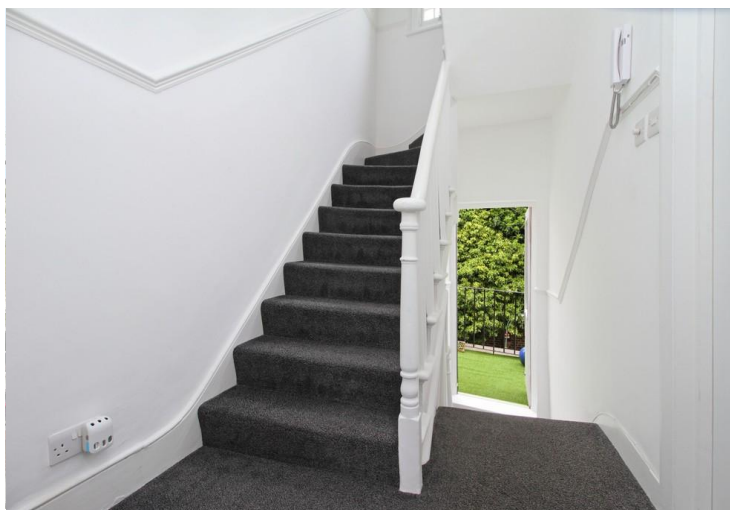
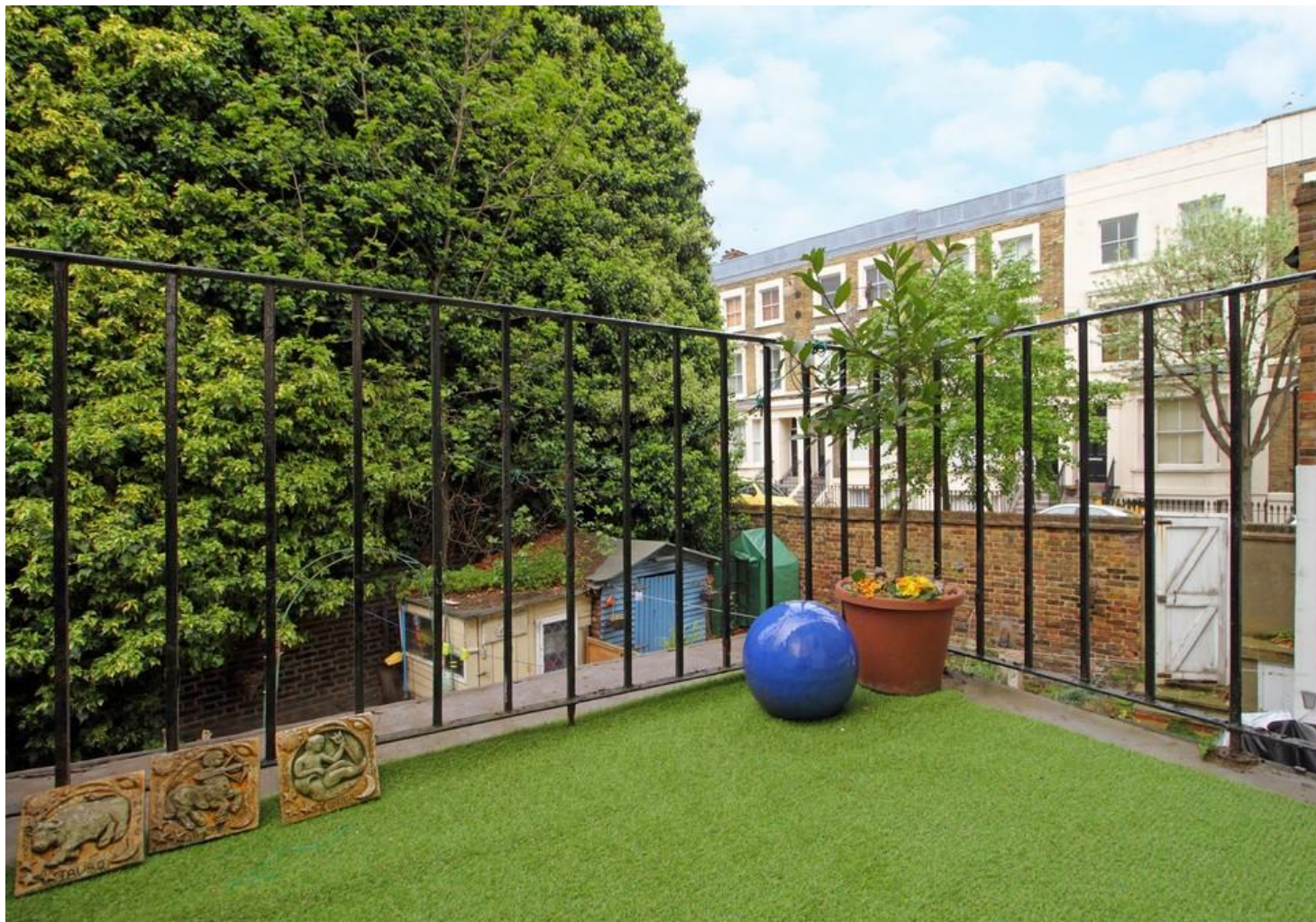
Guide Price £585,000

Leasehold

A delightful two bedroom first & second (top) floor apartment comprising 850 sqft / 78.9 sqm within an attractive period house in a quiet and sought-after residential street. On the first floor is a stunning reception room, separate kitchen/diner and access to a private roof terrace. On the second floor are the two bedrooms and bathroom together with access to plenty of storage space. This wonderful property enjoys an abundance of natural light and creates a warm and welcoming home. The apartment further benefits from high ceilings, plenty of period features, large sash windows and being moments away from a little gem of a park called Landseer Gardens. Ideally located in close proximity to local shops, bars, cafes, restaurants and excellent transport links.

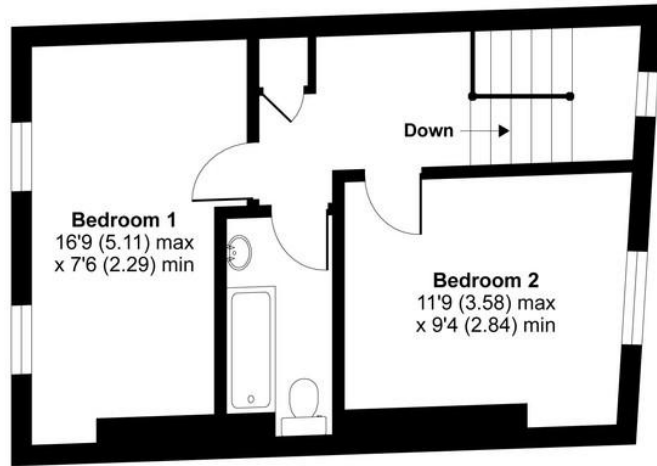
- 850 SQFT / 78.9 SQM
- First and Second Floor Apartment
- Private Roof Terrace
- Modern Fitted Kitchen/Diner
- Private Roof Terrace
- Abundance of Natural Light
- High Ceilings & Period Features
- Close Proximity to Excellent Amenities & Transport Links



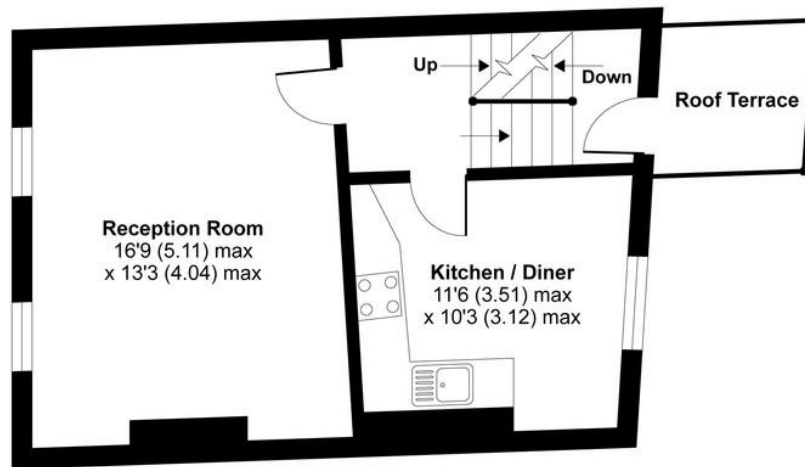


Landseer Road, London, N19

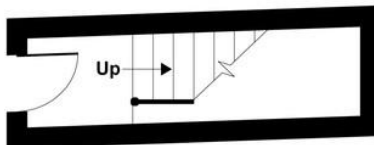
APPROX. GROSS INTERNAL FLOOR AREA 850 SQ FT 78.9 SQ METRES



SECOND FLOOR



FIRST FLOOR



GROUND FLOOR



DAVID ANDREW

your most valuable asset

Archway Office

671 Holloway Road
London, N19 5SE

T (0)20 7619 3750

Highbury Office

90 Highbury Park
London N5 2XE

T (0)20 7354 9111

Stroud Green Office

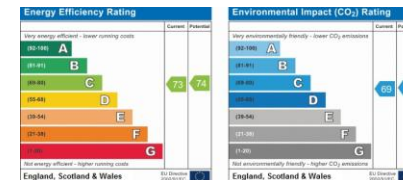
167 Stroud Green Road
London N4 3PZ

T (0)20 7281 2000

General Contact

E info@davidandrew.co.uk

W www.davidandrew.co.uk



Agent's Note:

Whilst Care has been exercised in the preparation of these sales particulars, statements about the property must not be relied upon as representations of statements of fact. Prospective purchasers must make and rely upon their own enquiries and those of professional representatives. The company accept not liability for any error contained in these particulars.



Whilst every attempt has been made to ensure the accuracy of the floor plan contained here, measurements of doors, windows and rooms are approximate and no responsibility is taken for any error, omission or misstatement. These plans are for representation purposes only as defined by RICS Code of Measuring Practice and should be used as such by any prospective purchaser. Specifically no guarantee is given on the total square footage of the property if quoted on this plan. Any figure given is for initial guidance only and should not be relied on as a basis of valuation.

Copyright nichecom.co.uk 2018 Produced for David Andrew REF : 277527

