



Victoria Road, N4 3SW

Guide Price Of £1,250,000
Freehold



Victoria Road N4 3SW

Guide Price Of £1,250,000

Freehold

Rarely available a four-bedroom family home located at the northern end of popular Victoria Road N4 nestled among a small terrace of three striking period houses.

Presented to the market in excellent decorative order features include two interconnecting reception rooms with large bay window and wood burning stove leading to a beautiful fully extended kitchen diner / family room. The kitchen features a range of contemporary wall and base units with a large central island, full width bi-fold doors lead to south west facing family garden. The ground floor also offers a guest WC and access to coal cellar. Moving up on the half landing and first floor there is a family bathroom servicing three bedrooms with a spacious master bedroom to the front aspect. On the top floor the loft has been converted to provide a fourth bedroom, en suite shower with useful storage into the eaves.

Victoria Road is a desirable quite location perfectly placed to take full advantage of a growing selection of bars, restaurants and coffee shops along both Stroud Green Road and Crouch End. The parkland Walk and Finsbury Park provide excellent open green spaces and St Aidans primary school (OFSTED REPORT – OUTSTANDING) is also close by. Don't forget to check the eagerly awaited City North development adding even more interest to a location growing in popularity.

- Attractive freehold family home
- This location is rarely available
- Fully extended kitchen / family room
- South West facing gardener's dream
- Family bathroom, en suite and wc
- Two interconnecting reception rooms
- Four well proportioned bedrooms
- 1732 SQ FT 160.9 SQM



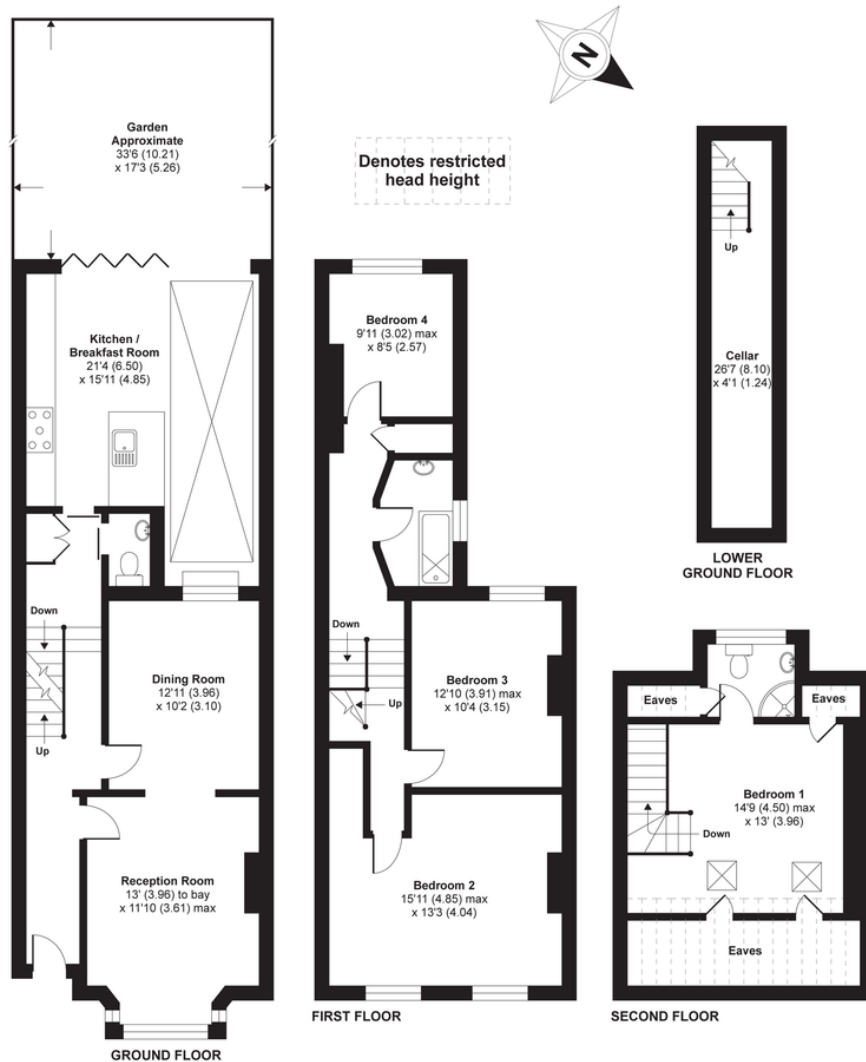


Victoria Road, London, N4

APPROX. GROSS INTERNAL FLOOR AREA 1732 SQ FT 160.9 SQ METRES (EXCLUDES RESTRICTED HEAD HEIGHT)

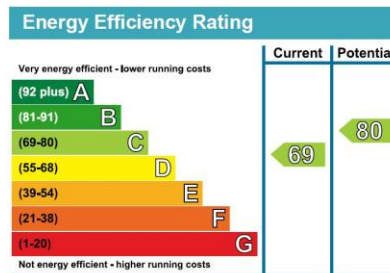
DAVID ANDREW

your most valuable asset



Whilst every attempt has been made to ensure the accuracy of the floor plan contained here, measurements of doors, windows and rooms are approximate and no responsibility is taken for any error, omission or misstatement. These plans are for representation purposes only as defined by RICS Code of Measuring Practice and should be used as such by any prospective purchaser. Specifically no guarantee is given on the total square footage of the property if quoted on this plan. Any figure given is for initial guidance only and should not be relied on as a basis of valuation.

Copyright nichecom.co.uk 2019 Produced for David Andrew REF : 483507



Archway Office

671 Holloway Road
London, N19 5SE

T (0)20 7619 3750

Highbury Office

90 Highbury Park
London N5 2XE

T (0)20 7354 9111

Stroud Green Office

167 Stroud Green Road
London N4 3PZ

T (0)20 7281 2000

General Contact

E info@davidandrew.co.uk

W www.davidandrew.co.uk

Agent's Note:

Whilst Care has been exercised in the preparation of these sales particulars, statements about the property must not be relied upon as representations of statements or fact. Prospective purchasers must make and rely upon their own enquiries and those of professional representatives. The company accept not liability for any error contained in these particulars.

