



Wray Crescent, N4 3LP – SOLD £643,750

Asking Price Of £650,000
Share of Freehold



Wray Crescent N4

Asking Price Of £650,000

Share of Freehold

Wonderfully light and airy three bedroom Victorian converted apartment with a unique private roof terrace.

Presented in excellent decorative order accommodation is arranged over the top two floors of this attractive end terrace period property. The second floor provides a spacious reception with feature stove, there is a separate reception with an attractive modern kitchen and butler sink. To the rear a bedroom/ second reception providing access to the terrace, boasting beautiful views over Wray Cr open space. The upper level offers a further two bedrooms with excellent built in storage. Internal viewing is highly recommended to best appreciate this very special period home.

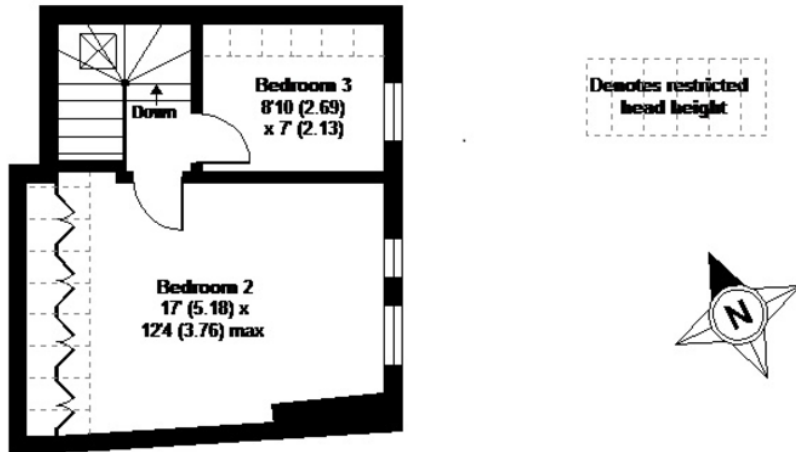
- Three bedrooms
- Unique private terrace
- Arranged over the top two floors
- Attractive period property
- Versatile living accommodation
- Wonderful green and leafy views
- No onward chain
- 829 sq ft 77 sqm



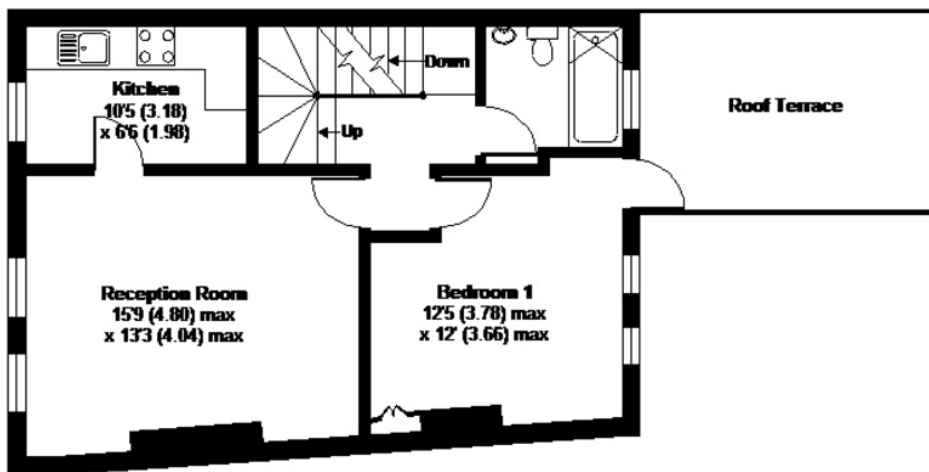


Wray Crescent, London, N4

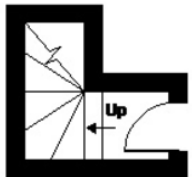
APPROX. GROSS INTERNAL FLOOR AREA 829 SQ FT 77 SQ METRES (EXCLUDES RESTRICTED HEAD HEIGHT)



THIRD FLOOR



SECOND FLOOR



FIRST FLOOR

Whilst every attempt has been made to ensure the accuracy of the floor plan contained here, measurements of doors, windows and rooms are approximate and no responsibility is taken for any error, omission or misstatement. These plans are for representation purposes only as defined by RICS Code of Measuring Practice and should be used as such by any prospective purchaser. Specifically no guarantee is given on the total square footage of the property if quoted on this plan. Any figure given is for initial guidance only and should not be relied on as a basis of valuation.

Copyright nichecom.co.uk 2016 Produced for David Andrew REF : 98857

DA

DAVID ANDREW

your most valuable asset

Archway Office

671 Holloway Road
London, N19 5SE

T (0)20 7619 3750

Highbury Office

90 Highbury Park
London N5 2XE

T (0)20 7354 9111

Stroud Green Office

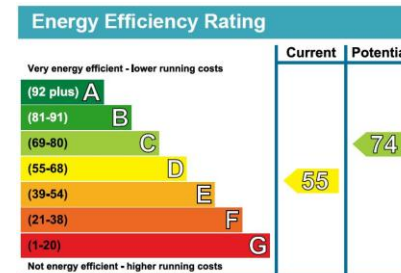
167 Stroud Green Road
London N4 3PZ

T (0)20 7281 2000

General Contact

E info@davidandrew.co.uk

W www.davidandrew.co.uk



Agent's Note:

Whilst Care has been exercised in the preparation of these sales particulars, statements about the property must not be relied upon as representations of statements or fact. Prospective purchasers must make and rely upon their own enquiries and those of professional representatives. The company accept not liability for any error contained in these particulars.

