



Holloway Road, N19 3JD

Guide Price £450,000

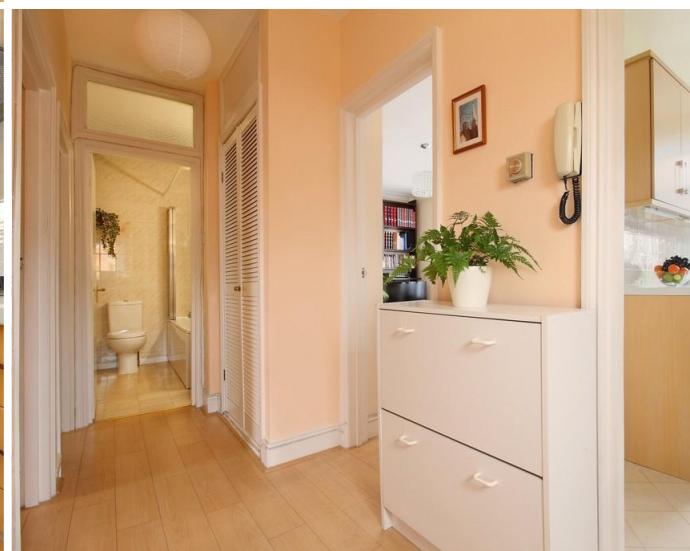
Holloway Road

Guide Price £450,000

Share of Freehold

A delightful two bedroom second floor period conversion presented in a good, well maintained condition and affording wonderful views of the City landscape and the local Church. Conveniently located for Archway transport links and amenities, this bright and spacious apartment comprises a double bedroom, single bedroom, bathroom and separate kitchen together with a welcoming hallway. The property further benefits from a Share of Freehold and double-glazing throughout. Located within close proximity to bus connections, Archway station (Northern Line) which allows easy access to the City & West End and Upper Holloway Overland station. Archway offers a great mix of popular local pubs, bars, restaurants and coffee shops.

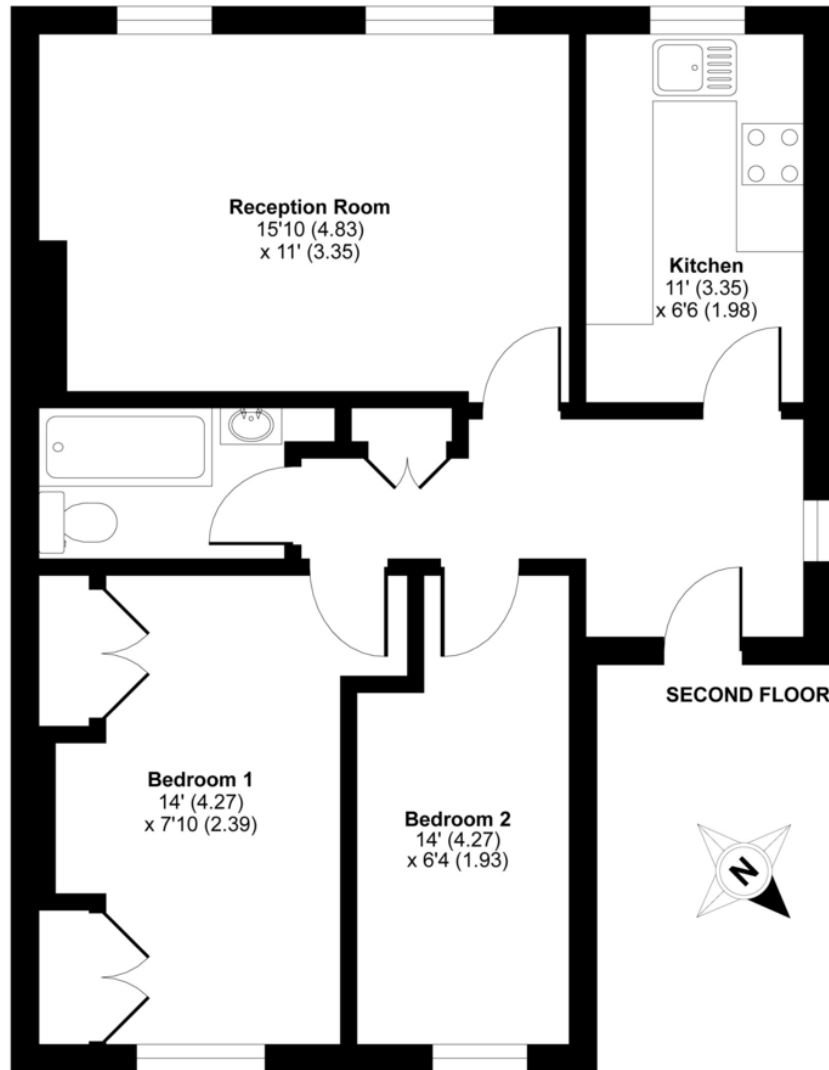
- Superb two bedroom apartment
- Set on the second floor
- Located within an attractive period property
- Double Master Bedroom
- Bright and airy living space
- Conveniently located for transport links
- Double glazing throughout
- Share of Freehold





Holloway Road, London, N19

APPROX. GROSS INTERNAL FLOOR AREA 603 SQ FT 56 SQ METRES



DAVID ANDREW

your most valuable asset

Archway Office

671 Holloway Road
London, N19 5SE

T (0)20 7619 3750

Highbury Office

90 Highbury Park
London N5 2XE

T (0)20 7354 9111

Stroud Green Office

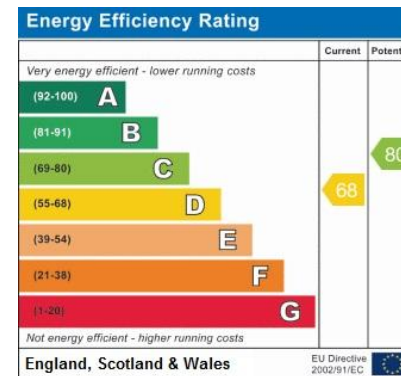
167 Stroud Green Road
London N4 3PZ

T (0)20 7281 2000

General Contact

E info@davidandrew.co.uk

W www.davidandrew.co.uk



Agent's Note:

Whilst Care has been exercised in the preparation of these sales particulars, statements about the property must not be relied upon as representations of statements or fact. Prospective purchasers must make and rely upon their own enquiries and those of professional representatives. The company accept not liability for any error contained in these particulars.



Whilst every attempt has been made to ensure the accuracy of the floor plan contained here, measurements of doors, windows and rooms are approximate and no responsibility is taken for any error, omission or misstatement. These plans are for representation purposes only as defined by RICS Code of Measuring Practice and should be used as such by any prospective purchaser. Specifically no guarantee is given on the total square footage of the property if quoted on this plan. Any figure given is for initial guidance only and should not be relied on as a basis of valuation.

Copyright nichecom.co.uk 2018 Produced for David Andrew REF : 242255

