



D  
A

Pooles Park, N4 3FD Long leasehold / Chain free

Asking Price Of £550,000

# Rosefield

Asking Price Of £550,000

Long Leasehold

Presented in exceptional condition a modern ground floor two double bedroom garden apartment comprising 674 sqft / 62.6 sqm of stylish internal living space. The property has just been completely refurbished. Features include high specification fixtures and fittings, a light and spacious 21' open plan kitchen / reception with direct access to a private green and leafy rear garden. This smart apartment also features two double bedrooms the master has useful fitted wardrobes. The surprisingly large bathroom offers a white three piece suite with fitted shower. Located in a modern development perfectly placed for super convenient access to Finsbury Park station (Victoria & Piccadilly lines) and all of Stroud Green's eclectic selection of bars, restaurants and coffee shops. Don't forget to check out the up and coming new development at City North. Offered chain free with a long unexpired lease. Early viewing is a must!

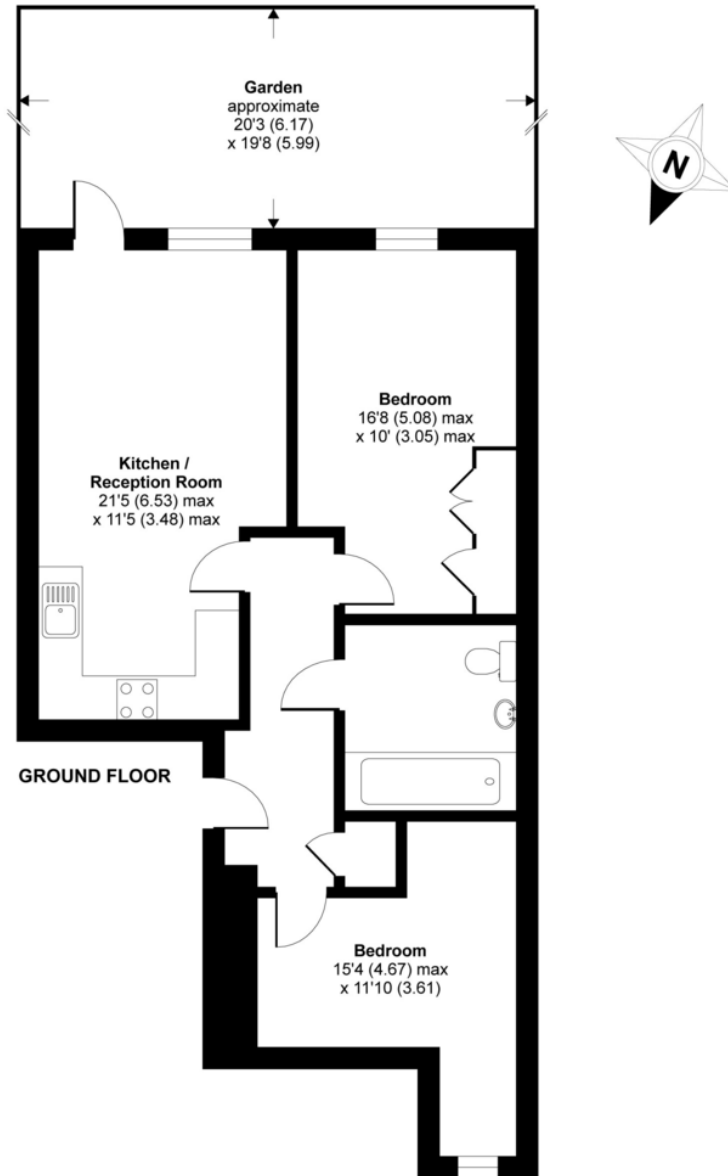
- Modern ground floor apartment
- Private green and leafy rear garden
- Two well-proportioned bedrooms
- Light and spacious kitchen/ reception
- Large family size bathroom
- Offered on a chain free basis
- Long unexpired lease
- 674 SQ FT 62.6 SQM





# Pooles Park, London, N4

APPROX. GROSS INTERNAL FLOOR AREA 674 SQ FT 62.6 SQ METRES



# DAVID ANDREW

your most valuable asset

Archway Office

671 Holloway Road  
London, N19 5SE

T (0)20 7619 3750

Highbury Office

90 Highbury Park  
London N5 2XE

T (0)20 7354 9111

Stroud Green Office

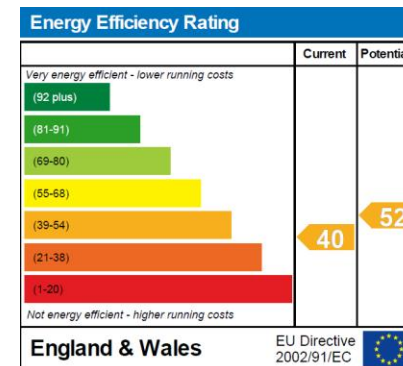
167 Stroud Green Road  
London N4 3PZ

T (0)20 7281 2000

General Contact

E [info@davidandrew.co.uk](mailto:info@davidandrew.co.uk)

W [www.davidandrew.co.uk](http://www.davidandrew.co.uk)



### Agent's Note:

Whilst Care has been exercised in the preparation of these sales particulars, statements about the property must not be relied upon as representations of statements or fact. Prospective purchasers must make and rely upon their own enquiries and those of professional representatives. The company accept not liability for any error contained in these particulars.



Whilst every attempt has been made to ensure the accuracy of the floor plan contained here, measurements of doors, windows and rooms are approximate and no responsibility is taken for any error, omission or misstatement. These plans are for representation purposes only as defined by RICS Code of Measuring Practice and should be used as such by any prospective purchaser. Specifically no guarantee is given on the total square footage of the property if quoted on this plan. Any figure given is for initial guidance only and should not be relied on as a basis of valuation.

Copyright nichecom.co.uk 2018 Produced for David Andrew REF : 299015

