



Lorne Road, N4 3RT

£850 pw

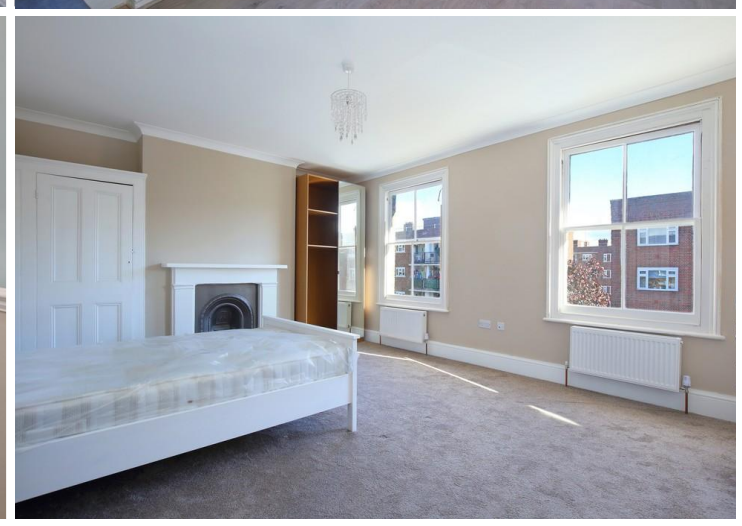
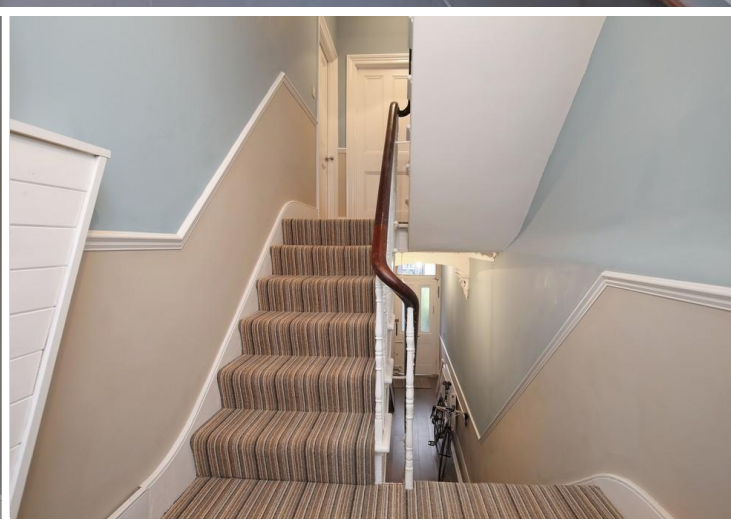
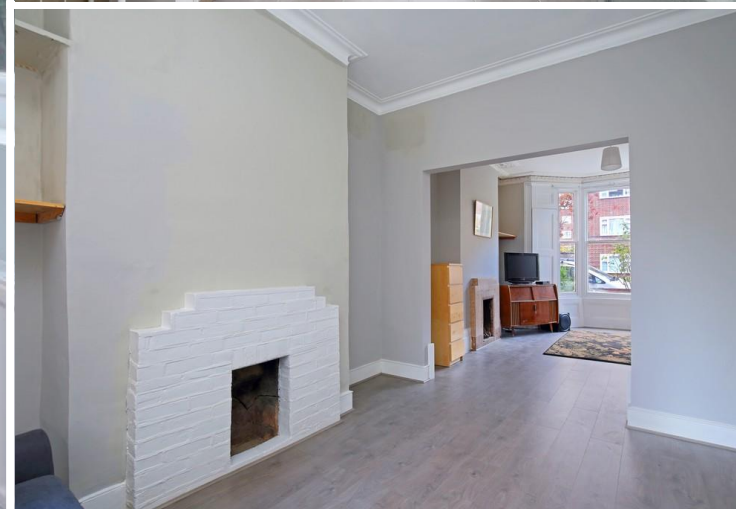
Lorne Road

£850 pw

Spacious four bedroom Victorian house located on a quiet residential road in the epicentre of the ever popular Stroud Green location in Finsbury Park. This beautiful house has been loving renovated back to its former glory with much of the original character retained merging with the new modern fittings throughout. The ground floor consists of a spacious double reception that has been opened up to allow light to flow, fully fitted kitchen complete with dining space and direct access to a private patio garden. The top two floors consist of four spacious bedrooms two of which have built-in storage, two mid landing bathrooms with both bath and shower facilities fully tiled and extremely generous in size also an extra separate toilet just to make things even more convenient. This is an excellent example of a three story four bedroom house locally and would

- Three story Victorian House
- Four Spacious bedrooms
- Finsbury Park (0.5 mi)
- Two spacious bathrooms
- Private Patio & Garden
- Beautifully designed eat-in kitchen
- Furnished
- Available late October 2019





Notes

DAVID ANDREW

your most valuable asset

Archway Office

671 Holloway Road
London, N19 5SE

T (0)20 7619 3750

Highbury Office

90 Highbury Park
London N5 2XE

T (0)20 7354 9111

Stroud Green Office

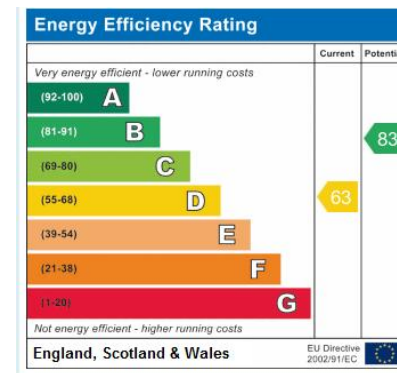
167 Stroud Green Road
London N4 3PZ

T (0)20 7281 2000

General Contact

E [info@davidandrew.co.uk](mailto:info@ davidandrew.co.uk)

W www.davidandrew.co.uk



Agent's Note:

Whilst Care has been exercised in the preparation of these sales particulars, statements about the property must not be relied upon as representations of statements or fact. Prospective purchasers must make and rely upon their own enquiries and those of professional representatives. The company accept not liability for any error contained in these particulars.

