



Tollington Place, N4 3QR

Asking Price Of £625,000

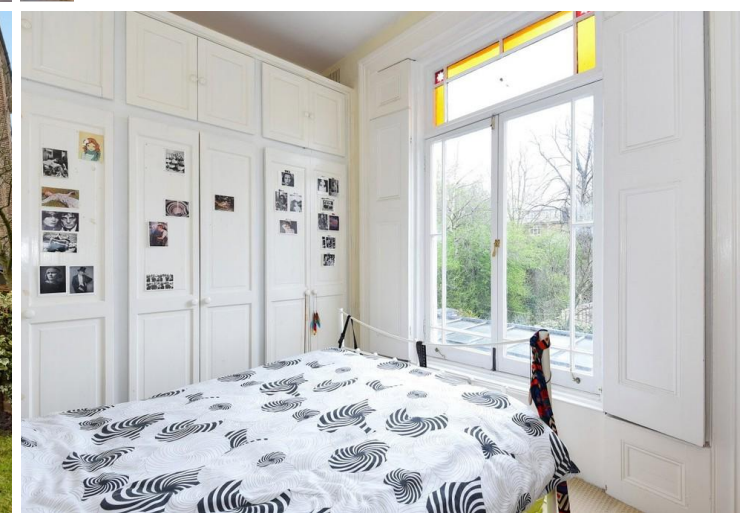
Tollington Place

Asking Price Of £625,000 Share of Freehold

Simply beautiful! A most attractive two bedroom garden apartment arranged over the raised ground floor of this imposing period property. Presented in excellent decorative order features include a grand separate reception room with high ceilings and a feature fireplace. There's a modern fitted kitchen with wonderful view over Wray Crescent open space. The bathroom has also recently been modernised featuring a period style suite with a modern twist. At the rear you will find two well-proportioned double bedrooms with fantastic views over neighbouring gardens. A really attractive feature of this fabulous home are the original large period windows with stained glass inserts and folding wooden shutters. At the rear the property also has the advantage of a well maintained private section of garden. Internal viewing is a must!

- Kerb appeal in abundance
- Wonderful proportions
- Retaining a wealth of charm
- Wonderful views from three aspects
- Offered chain free
- Private section of rear garden
- Quiet yet convenient location
- 774 SQ FT 71.9 SQM

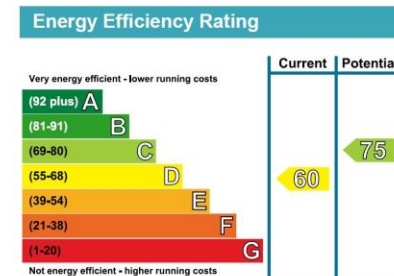
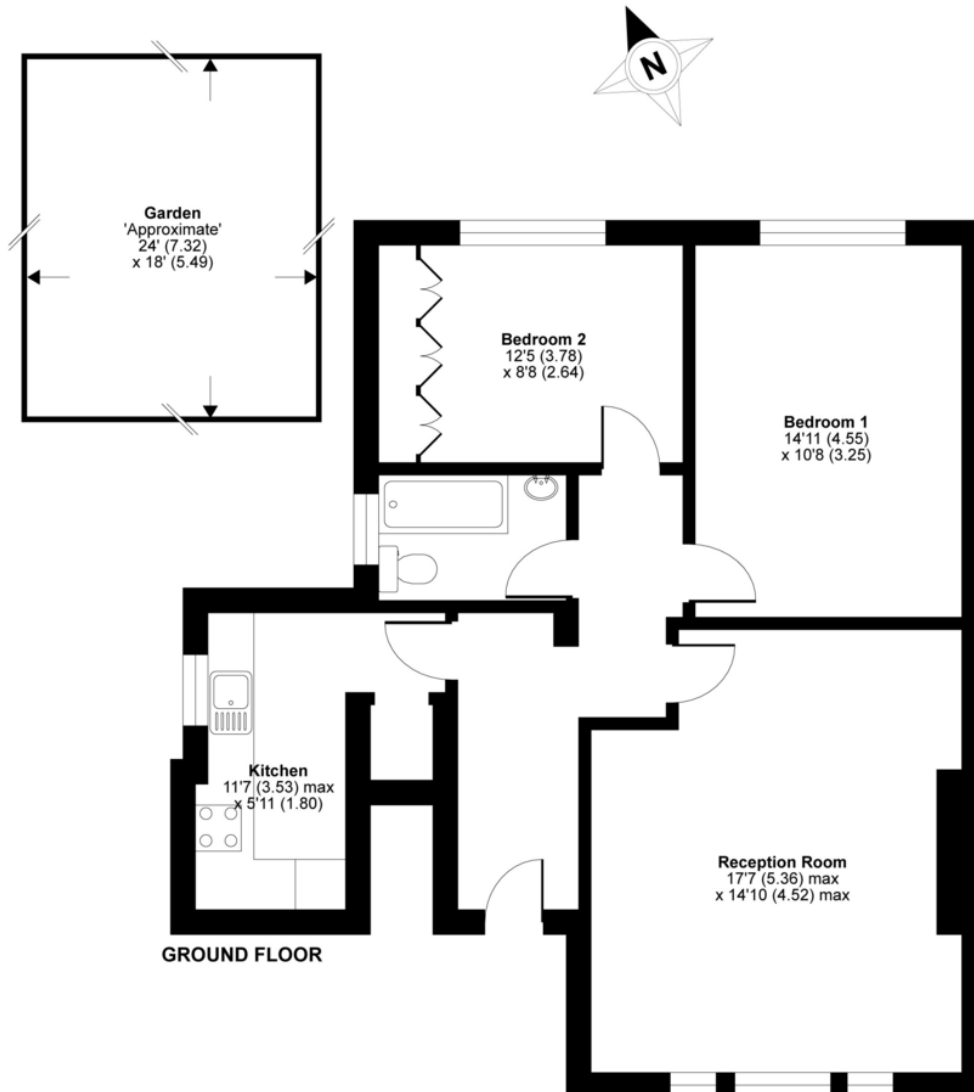




Tollington Place, London, N4

APPROX. GROSS INTERNAL FLOOR AREA 774 SQ FT 71.9 SQ METRES

DAVID ANDREW | your most valuable asset



Archway Office

671 Holloway Road
London, N19 5SE

T (0)20 7619 3750

Highbury Office

90 Highbury Park
London N5 2XE

T (0)20 7354 9111

Stroud Green Office

167 Stroud Green Road
London N4 3PZ

T (0)20 7281 2000

General Contact

E info@davidandrew.co.uk

W www.davidandrew.co.uk



Whilst every attempt has been made to ensure the accuracy of the floor plan contained here, measurements of doors, windows and rooms are approximate and no responsibility is taken for any error, omission or misstatement. These plans are for representation purposes only as defined by RICS Code of Measuring Practice and should be used as such by any prospective purchaser. Specifically no guarantee is given on the total square footage of the property if quoted on this plan. Any figure given is for initial guidance only and should not be relied on as a basis of valuation.

Copyright nichecom.co.uk 2017 Produced for David Andrew REF : 174083

Agent's Note:

Whilst Care has been exercised in the preparation of these sales particulars, statements about the property must not be relied upon as representations of statements or fact. Prospective purchasers must make and rely upon their own enquiries and those of professional representatives. The company accept not liability for any error contained in these particulars.

