



Carlton Road, N4 4NJ

Asking Price Of £400,000



# Carlton Road

Asking Price Of £400,000

Leasehold

A spacious first floor two double bedroom apartment with pretty private balcony presented in excellent condition throughout. Carlton Road is located on the Western side of Finsbury Park, allowing super easy access to both the park and the station (Victoria & Piccadilly lines). There is also a fantastic selection of local bars, restaurants and coffee shops along Stroud Green Road. This well proportioned apartment has been really well maintained by the present owners, features include a large reception with wooden flooring and feature fireplace. The reception also provides direct access to a balcony with great views over the communal garden. There are two double bedrooms, bathroom, separate wc and a modern fitted white high gloss kitchen. Internal viewing is highly recommended to fully appreciate the space and condition on offer.

- Arranged over the first floor
- Presented in move in condition
- Two well-proportioned bedrooms
- Spacious well appointed kitchen
- Reception leading to balcony
- Modern bathroom suite
- Quiet yet convenient location
- 733 SQ FT 68.1 SQ M

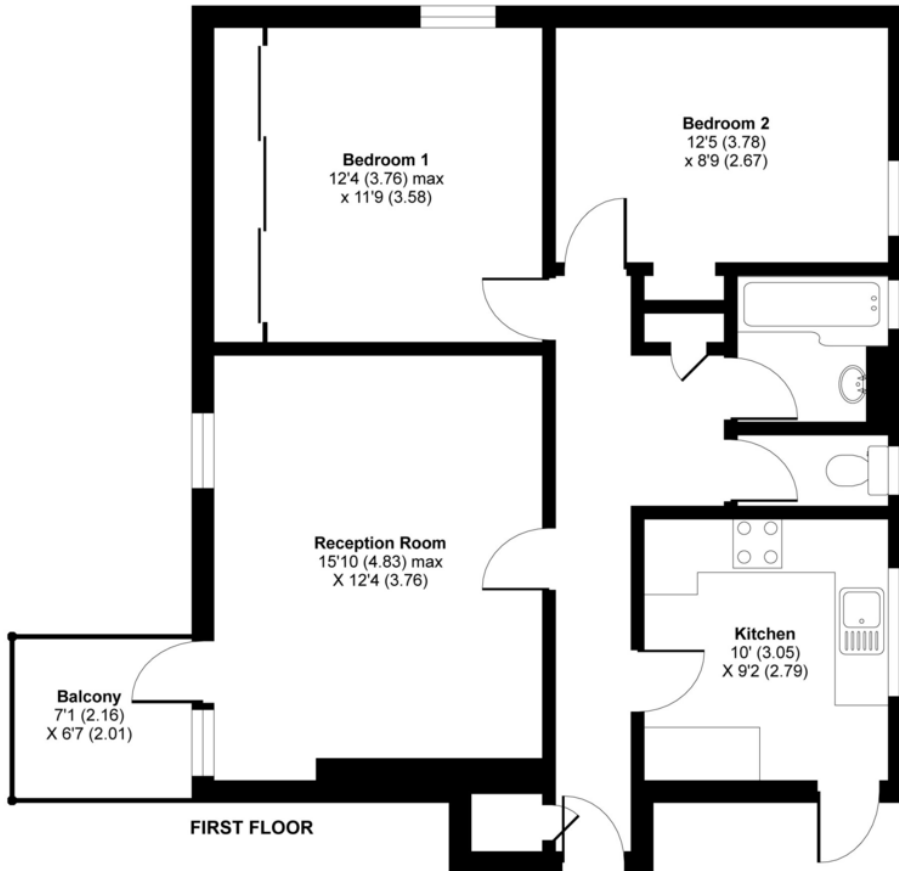






# Carlton Road, London, N4

APPROX. GROSS INTERNAL FLOOR AREA 733 SQ FT 68.1 SQ METRES



# DAVID ANDREW

your most valuable asset

Archway Office

671 Holloway Road  
London, N19 5SE

T (0)20 7619 3750

Highbury Office

90 Highbury Park  
London N5 2XE

T (0)20 7354 9111

Stroud Green Office

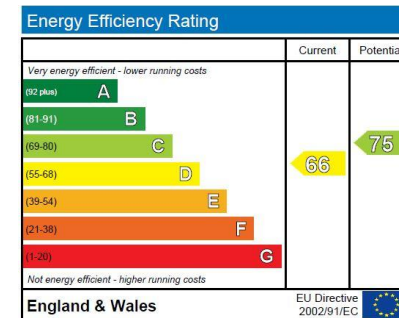
167 Stroud Green Road  
London N4 3PZ

T (0)20 7281 2000

General Contact

E [info@davidandrew.co.uk](mailto:info@davidandrew.co.uk)

W [www.davidandrew.co.uk](http://www.davidandrew.co.uk)



### Agent's Note:

Whilst Care has been exercised in the preparation of these sales particulars, statements about the property must not be relied upon as representations of statements or fact. Prospective purchasers must make and rely upon their own enquiries and those of professional representatives. The company accept not liability for any error contained in these particulars.



Whilst every attempt has been made to ensure the accuracy of the floor plan contained here, measurements of doors, windows and rooms are approximate and no responsibility is taken for any error, omission or misstatement. These plans are for representation purposes only as defined by RICS Code of Measuring Practice and should be used as such by any prospective purchaser. Specifically no guarantee is given on the total square footage of the property if quoted on this plan. Any figure given is for initial guidance only and should not be relied on as a basis of valuation.

Copyright nichecom.co.uk 2017 Produced for David Andrew REF : 198915

