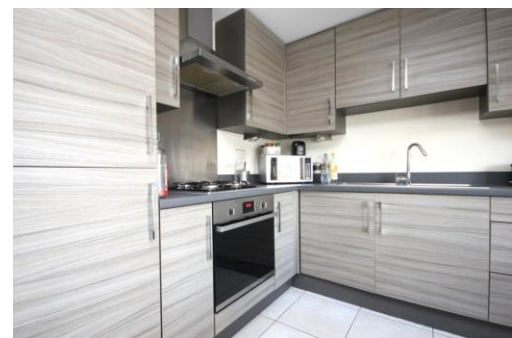




Poolers Park, London N4 3FG

£425 pw Fees Apply



Two double bedroom two bathroom apartment located in this popular new development just a few minutes walk to the excellent transport links of Finsbury Park station and local amenities. Set on the top floor of the building and boasting plenty of light throughout, the apartment consists of two well proportioned double bedrooms, (one with en-suite bathroom), family bathroom, living area with balcony and open plan modern fitted kitchen. Lift access available.

- Two Good Sized Double Bedrooms
- Two Bathrooms
- Modern Apartment
- Balcony
- Secure Fob Entry Building
- Lift Access
- Offered furnished
- Available mid- late September 2016



Agent's Note:
 Whilst Care has been exercised in the preparation of these particulars, statements about the property must not be relied upon as representations of statement or fact. Prospective applicants must make and rely upon their own enquiries and those of their professional representatives. The company accepts no liability for any error contained in these particulars.

Archway office
 671 Holloway Road
 London, N19 5SE
 T (0)20 7619 3750
 E archway@davidandrew.co.uk

Highbury office
 90 Highbury Park
 London, N5 2XE
 T (0)20 7354 9111
 E highbury@davidandrew.co.uk

Stroud Green office
 167 Stroud Green Road
 London, N4 3PZ
 T (0)20 7281 2000
 E stroudgreen@davidandrew.co.uk

Energy Efficiency Rating		Current	Potential
Very energy efficient - lower running costs			
(92-108)	A		
(81-91)	B		
(69-80)	C	85	85
(55-68)	D		
(39-54)	E		
(21-38)	F		
(1-20)	G		
Not energy efficient - higher running costs			