



Stapleton Hall Road, N4 3QD

£2,300 pcm



Stapleton Hall

£2,300 pcm

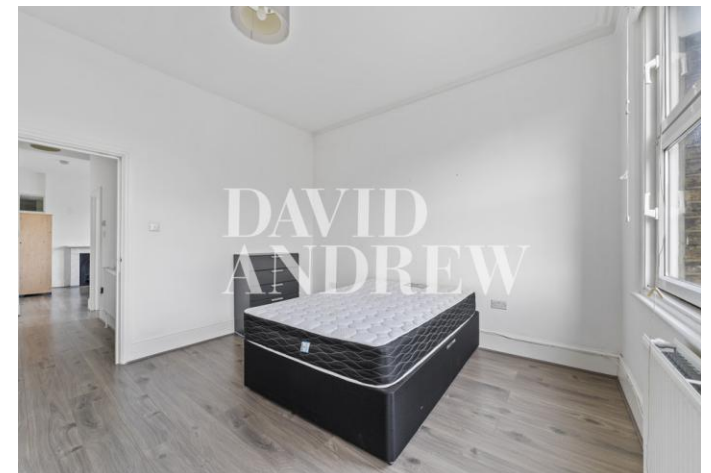
A spacious two-bedroom apartment set on the first floor of this attractive period property, with two bathrooms, 0.6 miles from Finsbury Park Station.

This flat offers a generous living and entertaining space, plus well-proportioned bedrooms, two modern bathrooms, and separate fitted kitchen, all complimented by an abundance of natural light throughout. The apartment further benefits from wooden flooring, gas central heating, and double glazed windows.

Situated in an excellent location with independent restaurants, bars and shops and great transport links - 0.6 Miles to Finsbury Park Station. Crouch Hill (Overground) station is also a moment's walk away. Offered Furnished, Available Now.

- Two Double Bedrooms
- Two Bathrooms
- Period Conversion
- Excellent Location
- 682 sqft / 63.4 sqm
- EPC C
- Offered Furnished
- Available Now





Notes

Archway Office

671 Holloway Road
London, N19 5SE

T (0)20 7619 3750

Highbury Office

90 Highbury Park
London N5 2XE

T (0)20 7354 9111

Stroud Green Office

167 Stroud Green Road
London N4 3PZ

T (0)20 7281 2000

General Contact

E info@davidandrew.co.uk

W www.davidandrew.co.uk



Score	Energy rating	Current	Potential
92+	A		
81-91	B		
69-80	C	69 c	76 c
55-68	D		
39-54	E		
21-38	F		
1-20	G		

Agent's Note:
Whilst Care has been exercised in the preparation of these sales particulars, statements about the property must not be relied upon as representations of statements or fact. Prospective purchasers must make and rely upon their own enquiries and those of professional representatives. The company accept not liability for any error contained in these particulars.