



Wilberforce Road, N4 2SP

£2,000 pcm

Willerforce Road

£2,000 pcm

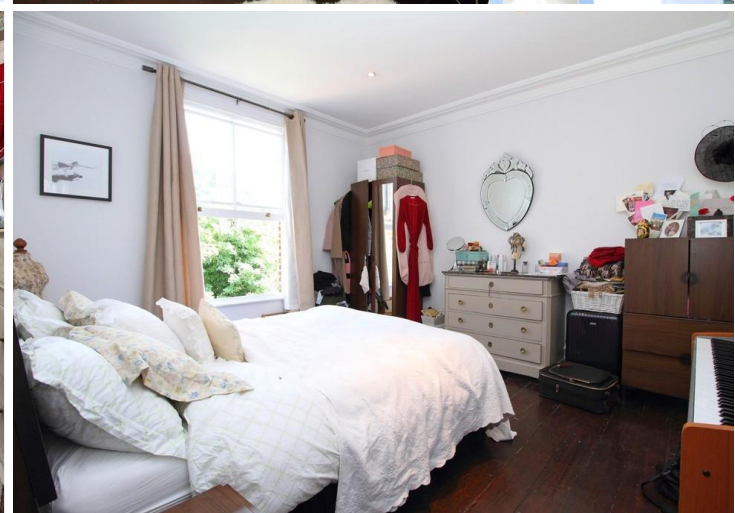
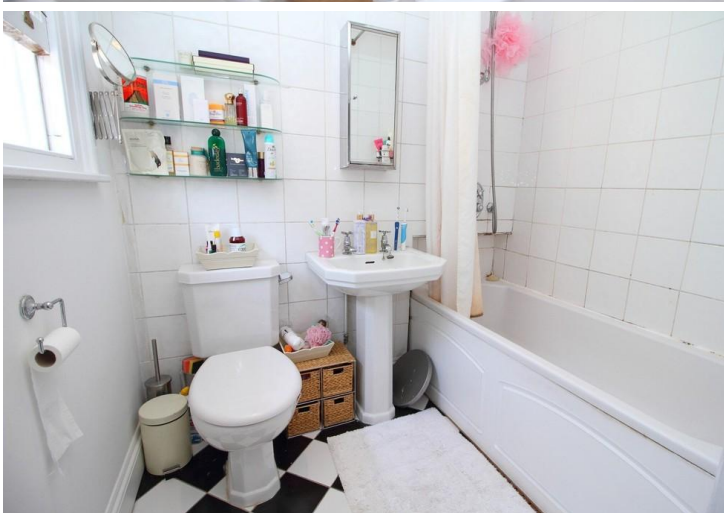
Spacious two double bedroom period conversion with a private garden situated on this popular residential road in N4 close to Arsenal and Finsbury Park stations.

Property features include bright reception, fully fitted modern kitchen, two double bedrooms, bathroom with bath and shower, real wood flooring, gas central heating and a private decked garden.

Located in a prime location, just a short walk from Clissold Park, Finsbury Park Station and Arsenal tube Stations, as well as all of the local amenities Highbury has to offer. Offered Unfurnished or Part Furnished, Available 4th July 2022.

- Two Double Bedrooms
- Private Garden
- Modern kitchen
- Split Level
- Period Conversion
- Great Transport Links
- Part Furnished
- Available 4th July 2022





Notes

DAVID ANDREW

your most valuable asset

Archway Office

671 Holloway Road
London, N19 5SE

T (0)20 7619 3750

Highbury Office

90 Highbury Park
London N5 2XE

T (0)20 7354 9111

Stroud Green Office

167 Stroud Green Road
London N4 3PZ

T (0)20 7281 2000

General Contact

E [info@davidandrew.co.uk](mailto:info@ davidandrew.co.uk)

W www.davidandrew.co.uk



Agent's Note:
Whilst Care has been exercised in the preparation of these sales particulars, statements about the property must not be relied upon as representations of statements or fact. Prospective purchasers must make and rely upon their own enquiries and those of professional representatives. The company accept not liability for any error contained in these particulars.

