



Regina Road, N4 3PP

£1,600 pcm

Regina Road

£1,600 pcm

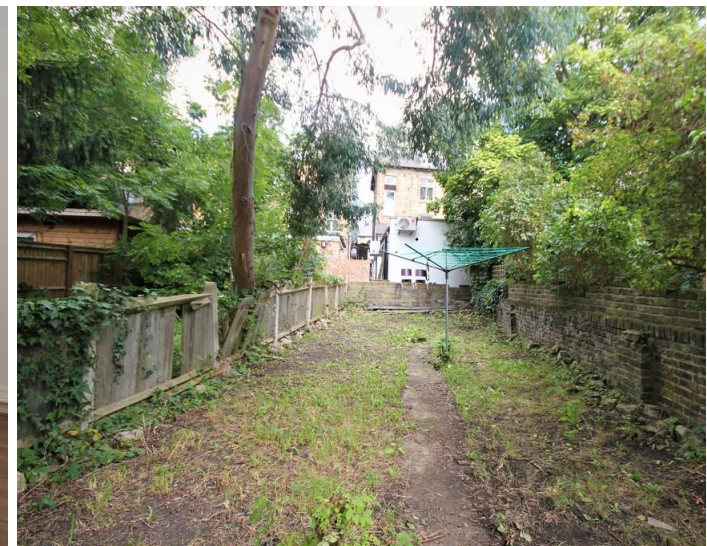
Presenting a large ground floor, one bedroom Victorian conversion with access to a private garden, located moments from the Finsbury Park tube station.

Property features include a separate reception with engineered wooden flooring, impressive kitchen diner with space for a dining table, ample storage, a three piece bathroom suite and central gas heating.

Regina Road is a quiet location perfectly placed, only a short walk to Finsbury Park station (Victoria & Piccadilly lines) and the high street which offers a selection of bars, restaurants and local shopping amenities.

Offered mostly furnished. Available mid June.

- One Bedroom
- Private & Communal Garden
- Wooden Flooring
- Large Kitchen
- Three Piece Bathroom
- Mostly Furnished
- Available Mid June
- EPC Rating: C





Notes

Archway Office

671 Holloway Road
London, N19 5SE

T (0)20 7619 3750

Highbury Office

90 Highbury Park
London N5 2XE

T (0)20 7354 9111

Stroud Green Office

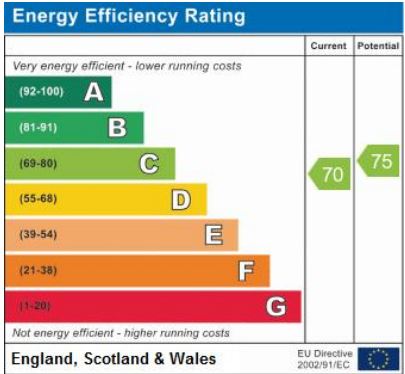
167 Stroud Green Road
London N4 3PZ

T (0)20 7281 2000

General Contact

E info@davidandrew.co.uk

W www.davidandrew.co.uk



Agent's Note:
Whilst Care has been exercised in the preparation of these sales particulars, statements about the property must not be relied upon as representations of statements or fact. Prospective purchasers must make and rely upon their own enquiries and those of professional representatives. The company accept not liability for any error contained in these particulars.

