



Florence Road, N4 4DL

£2,250 pcm



Florence Road

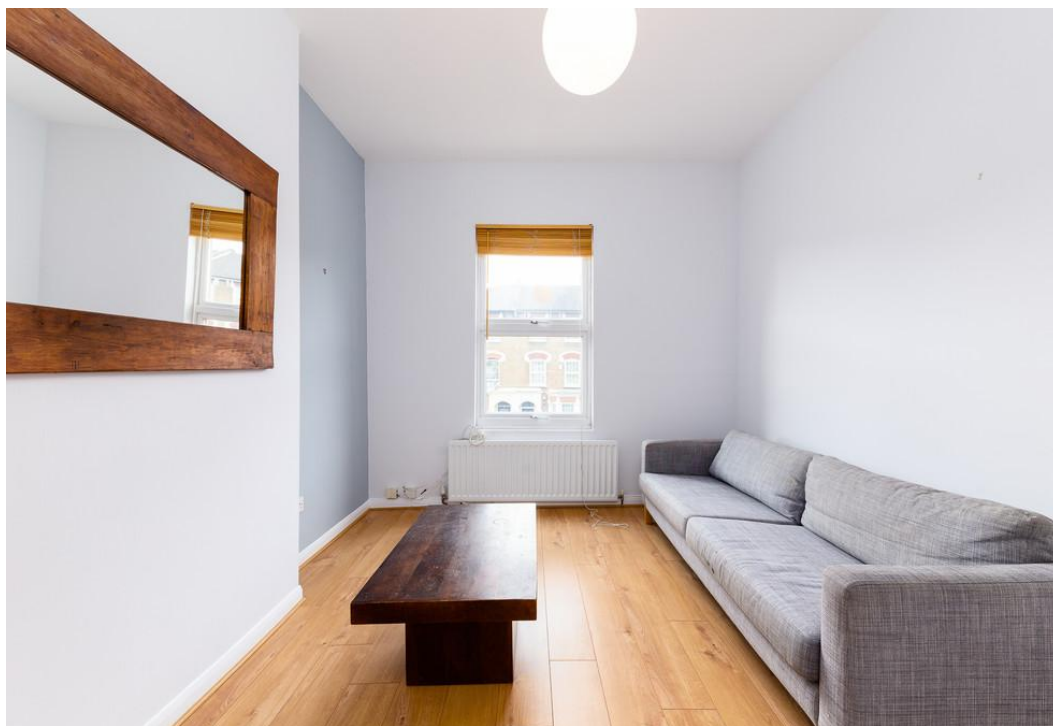
£2,250 pcm

Stunning two-bedroom apartment set over the first floor of this Victorian conversion located less than 10-15 minutes' walk from Finsbury Park Station.

The property is arranged over two levels and benefits from a bright airy lounge separate from the kitchen, fully fitted modern kitchen, modern bathroom, two double bedrooms, gas central heating, wood flooring and ample storage throughout.

Located in a prime location, just a short 10–15-minute walk from Finsbury Park Station, as well as all the local amenities Stroud Green has to offer. Offered Furnished, Available 6th of September.

- Two Double Bedrooms
- Separate Kitchen
- First Floor
- Split Level
- Council Tax: B
- EPC Rating: C
- Offered Furnished
- Available 6th of September





Notes

Archway Office

671 Holloway Road
London, N19 5SE

T (0)20 7619 3750

Highbury Office

90 Highbury Park
London N5 2XE

T (0)20 7354 9111

Stroud Green Office

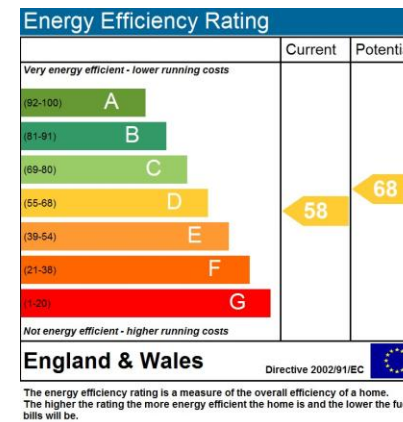
167 Stroud Green Road
London N4 3PZ

T (0)20 7281 2000

General Contact

E info@davidandrew.co.uk

W www.davidandrew.co.uk



Agent's Note:

Whilst Care has been exercised in the preparation of these sales particulars, statements about the property must not be relied upon as representations of statements or fact. Prospective purchasers must make and rely upon their own enquiries and those of professional representatives. The company accept not liability for any error contained in these particulars.

