



Aubert Park, N5 1TL

£2,650 pcm



Aubert Park

£2,650 pcm

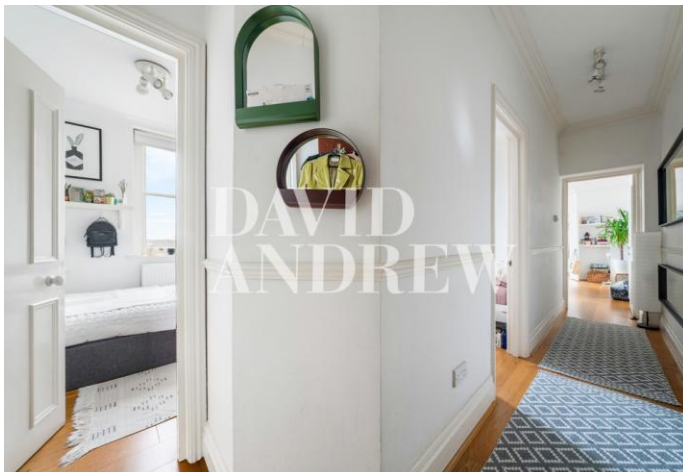
A stunning two bedroom top floor flat, located in the prime location close to Highbury Barn and Arsenal Tube. Well located in this impressive Victorian building.

The accommodation comprises large and very bright living room with feature fireplace, modern kitchen, two bedrooms and tasteful bathroom with bath and shower plus a large communal garden.

The property is located just a short stroll from the local amenities of Highbury & Islington, Highbury Barn & Highbury Fields. moments from Arsenal tube. Offered Part Furnished, Available 16th September 2023

- Two Double Bedrooms
- Victorian Conversion
- Communal garden
- Close Proximity To Drayton Park & Highbury & Islington
- Real Wood Flooring
- Bright & Spacious Throughout
- Part furnished
- Available 16th September 2023





Notes

Archway Office

671 Holloway Road
London, N19 5SE

T (0)20 7619 3750

Highbury Office

90 Highbury Park
London N5 2XE

T (0)20 7354 9111

Stroud Green Office

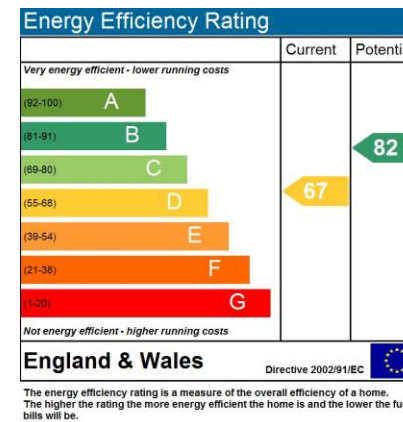
167 Stroud Green Road
London N4 3PZ

T (0)20 7281 2000

General Contact

E info@davidandrew.co.uk

W www.davidandrew.co.uk



Agent's Note:

Whilst Care has been exercised in the preparation of these sales particulars, statements about the property must not be relied upon as representations of statements or fact. Prospective purchasers must make and rely upon their own enquiries and those of professional representatives. The company accept not liability for any error contained in these particulars.

