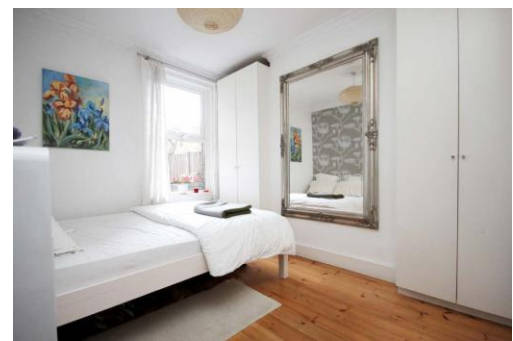




Almington Street N4 3BP

£350 pw Fees Apply



Simply stunning ground floor one bedroom garden flat located on a quiet turning of Finsbury Park N4. Offering a great size lounge with original wooden shutters & plenty of period features, wooden flooring, large bedroom with built in wardrobes & a large modern kitchen diner leading to a bright landscape garden.

- One Bedroom
- Private Landscape Garden
- Wooden Flooring
- Original Features
- Victorian Conversion
- Furnished
- Large Kitchen Diner
-

Stroud Green

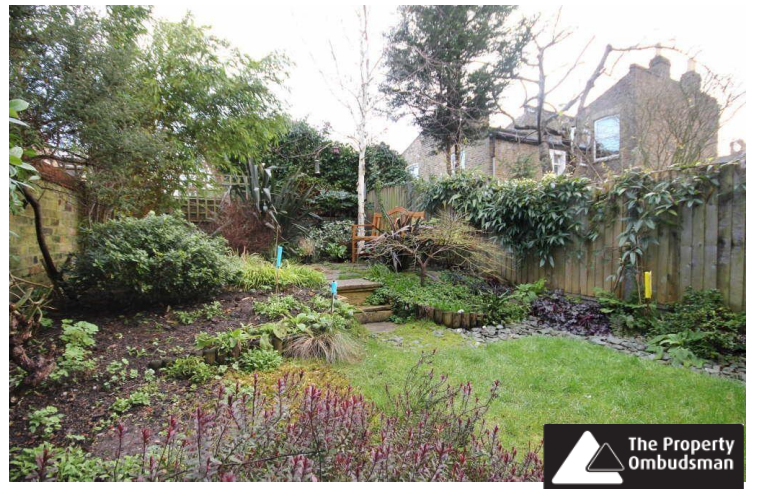
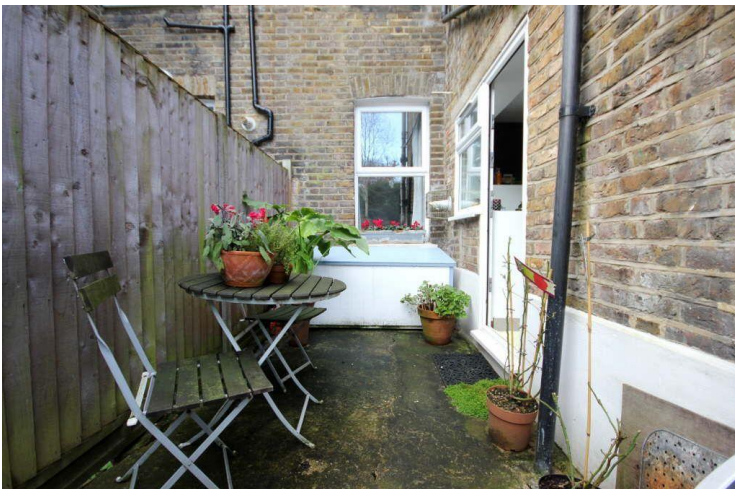
To arrange a viewing please contact:

Stroud Green office

167 Stroud Green Road
London, N4 3PZ

T (0)20 7281 2000

E stroudgreen@davidandrew.co.uk



Agent's Note:
 Whilst Care has been exercised in the preparation of these particulars, statements about the property must not be relied upon as representations of statement or fact. Prospective applicants must make and rely upon their own enquiries and those of their professional representatives. The company accepts no liability for any error contained in these particulars.

Archway office
 671 Holloway Road
 London, N19 5SE
 T (0)20 7619 3750
 E archway@davidandrew.co.uk

Highbury office
 90 Highbury Park
 London, N5 2XE
 T (0)20 7354 9111
 E highbury@davidandrew.co.uk

Stroud Green office
 167 Stroud Green Road
 London, N4 3PZ
 T (0)20 7281 2000
 E stroudgreen@davidandrew.co.uk

Energy Efficiency Rating		Current	Potential
Very energy efficient - lower running costs			
(92-100)	A		
(81-91)	B		
(69-80)	C		
(55-68)	D		66
(39-54)	E		
(21-38)	F		
(1-20)	G		78
Not energy efficient - higher running costs			